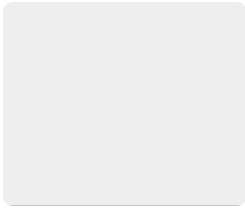
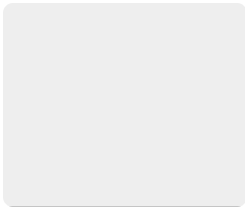


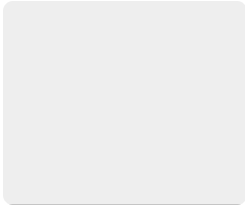
Book ()
1958,



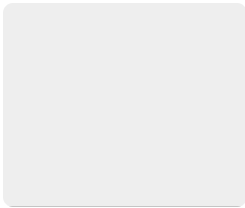
Book (10365599)
1954,



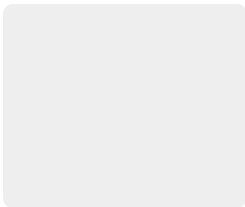
Book (10879078)
1955,



Book (13955203)
1958,



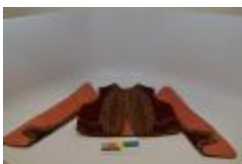
Book (1526756)
1952,



book (1549770)
1955,



Hat (1993.11.1B)
1950s,



Vest (1993.22.1)
1954,



Player, Record (1993.29.10)
1954,



Camera Box (1993.29.9)
1946 - 1951



Photograph (1993.33.4)
1955



Photograph (1993.39.1)
1955
Frances's Collection



Photograph (1993.39.2)
1955



Photograph (1993.41.1)
1950s
Pierre Austin De Mets Papers (NHM07)



Card, Membership (1993.42.18.26)
1950,



Card, Membership (1993.42.18.27)
1951,



Card, Membership (1993.42.18.28)
1952;



Card, Membership (1993.42.18.29)
1953;



Card, Membership (1993.42.18.30)
1954;



Card, Membership (1993.42.18.31)
1955;



Card, Membership (1993.42.18.32)
1956;



Card, Membership (1993.42.18.33)
1957;



Card, Membership (1993.42.18.34)
1958;



Card, Membership (1993.42.18.35)
1959;



Card, Membership (1993.42.21.5)
1959;



Card, Membership (1993.42.21.6)
December 12, 1957,



Gavel (1993.43.3)
after 1952,
Eugenia Pilafas Collection



Bag (1993.52.2)
1950s



Rug (1993.52.5)
1950,



Certificate, Birth (1993.70.7)
June 16, 1957



Mixer, Ice-cream (1994.102.1.A)
March 6, 2013, 1950 – 1960
Margaret's Collection



Mixer, Ice-cream (1994.102.1.B)
March 6, 2013, 1950 – 1960
Margaret's Collection



Jacket (1994.123.1)
1954, 1954



Box, Candy (1994.127.3)
1921 – 1997
SUGAR BOWL SWEET SHOP



Picture (1994.128.1)
1959,



Bottle (1994.13.21)
1930 – 1950
Georgia Kotsiopoulos Collection



Bottle (1994.13.22)
March 6, 2013, 1930 – 1950
Georgia Kotsiopoulos Collection



Picture (1994.131.1)
1952 – 1955



Picture (1994.131.2)
1952,



Photograph (1994.131.3)
1949 – 1952



Shirt (1994.138.1.A)
1930 – 1950



Shirt (1994.138.1.B)
1930 – 1950



Photograph (1994.140.3)
1958,



Photograph (1994.140.6)
1950s,



Flatcap (1994.32.1)
1934 – 1989



Coin (1994.41.16.E)
1959,



Coin (1994.41.16.F)
1959,



Coin (1994.41.16.G)
1959,



Coin (1994.41.16.H)
1954,



Coin (1994.41.16.I)
1954,



Coin (1994.41.16.J)
1954,



Painting (1994.79.C)
1958,



Doll (1994.80.A)
1950 – 1970



Doll (1994.80.D)
1950 – 1970



Doll (1994.80.E)
1950 – 1970



Doll (1994.80.I)
1950 – 1970



Doll (1994.80.K)
1950 – 1970



Plate, Commemorative (1995.19.2)
circa 1927 – 1952,



Certificate, Achievement (1995.19.8.7)
September 18, 1958,



Certificate, Membership (1995.19.9.1)
August 15, 1955,



Bedspread (1996.18.1)
1954,



Beret (1996.20.1)
1950s, 1950
Constantine's Collection



Cloche (1996.20.2)
1950s,
Constantine's Collection



Plate, Engraving (1996.50.2)
March 6, 2013, 1933 – 1970
Kalpake Family Collection



Plate Engraving (1996.50.3)
March 6, 2013, 1933 - 1970
Kalpake Family Collection



Ad, Newspaper (1996.64.15.A)
April 12, 2013, 1936 - 2013
CUPID CANDIES



Blender (1996.64.6)
1940 - 1957
CUPID CANDIES



Photograph (1996.75.2)
October 1959,



Purse (1997.42.2)
February 26, 2013, 1940 - 1960



Flag (1998.17.2)
before 1959,



Jacket (1998.19.1.A)
1941 - 1961
Defenders of Democracy



Necktie (1998.19.1.B)
1941 – 1961
Defenders of Democracy



Shirt (1998.19.1.C)
1941 – 1961
Defenders of Democracy



Pants (1998.19.1.D)
1941 – 1961
Defenders of Democracy



Belt (1998.19.1.E)
1941 – 1961
Defenders of Democracy



Bag, Tagari (1998.3.1)
1997, 1997



Photograph (1998.42.10)
August 1, 1955, 1955
George's Collection



Photograph (1998.42.11)
January 12, 1957,



Photograph (1998.42.12)
1958
George's Collection



Photograph (1998.42.14)
1943—1975
George's Collection



Photograph (1998.42.8)
1950
George's Collection



Photograph (1998.42.9)
1951
George's Collection



Photograph (1998.43.1)
1954
James's Collection



Photograph (1998.53.15)
1950,
Steve N. Pisanos Collection



Photograph (1998.53.16)
April 1950,
Steve N. Pisanos Collection



Photograph (1998.56.16)
May 18, 1956,



Photograph (1998.56.35)
circa 1950,



Photograph (1998.56.36)
circa 1950,



Photograph (1999.11.5)
1950,
Arthur Peponis Collection



Photograph (1999.11.9)
1925 – 1950,
Arthur Peponis Collection



Hat (1999.9.1)
1950 – 1970



Hatbox (1999.9.10)
1950-1970



Hatbox (1999.9.12)
1950-1970



Hat (1999.9.2)
1950-1970



Hat (1999.9.3)
1950s, 1950-1979
Helen Stamas Mitchell Hat Collection



Hat (1999.9.4)
1950s, 1950-1970



Hat (1999.9.5)
1950s, 1950-1970



Hat (1999.9.6)
February 28, 2013, 1950 - 1970



Hat (1999.9.7)
1950s, 1950 – 1970



Hat (1999.9.8)
February 28, 2013, 1950 – 1970



Hat (1999.9.9)
1950 – 1970



Receipt (2000.3.59.A)
April 23, 1950,



Receipt (2000.3.59.B)
August 20, 1950,



Receipt (2000.3.60)
February 7, 1950,



Photograph (2000.3.65)
1948 – 1950



Tablecloth (2001.18.1)
1940 – 1950



Photograph (2001.22.2)
1942 – 1960



Rug (2001.33.1)
1950s,



Runner (2001.33.2)
1950s,



Rug (2001.33.3.A)
February 25, 2013, 1950 – 1964



Rug (2001.33.3.B)
February 25, 2013, 1950 – 1964



Rug (2001.33.3.C)
February 25, 2013, 1950 – 1964



Runner (2001.33.4)
1950s,



Bedspread (2001.33.5)
1950s,



Photograph (2001.34.8.1)
1950s,



Jug (2001.38.30)
1928 – 1950



Dress (2001.44.4)
February 22, 2013, 1950 – 1970
Coula P Collection



Gown, Wedding (2001.45.1)
1952,



Cape (2001.45.2)
1952,



Glove (2001.45.3.A)
1952,



Glove (2001.45.3.B)
1952,



Case (2002.36.3.A)
circa 1950,



Case (2002.36.3.B.)
1950s,



Vestment (2002.45.2)
1950, 1950



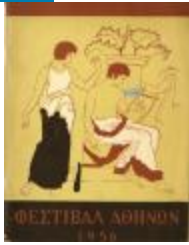
Photograph (2002.51.27.1)
August 15, 1956,



Photograph (2002.51.27.2)
1959,



Booklet (2002.51.33)
1953,



Program (2002.51.39)
1998,



Poster (2002.52.30)
1991,



Bag, Tagari (2003.21.1.1)
February 25, 2013, 1940 - 1960



Bag, Tagari (2003.21.1.2)
February 25, 2013, 1940 - 1960



Bag, Tagari (2003.21.1.3)
February 25, 2013, 1940 - 1960



Bag, Tagari (2003.21.1.4)
February 25, 2013, 1940 - 1960



Bag, Tagari (2003.21.1.5)
February 25, 2013, 1940 - 1960



Photograph (2003.32.2)
March 2, 1954



Photograph (2003.33.15.B)
1959,



Plate, Decorative (2003.37.11)
1900 - 2003
JANE SARLAS FONTANA



Jar, Confectionary (2003.5.2)
1924 - 1954
Alex's Candy Shop



Photograph (2003.56.5.1)
1951 - 1953
Magda's Collection



Photograph (2003.56.5.2)
1951 - 1953
Magda's Collection



Photograph (2003.58.5.1)
June 24, 1956,
Pagedas Family Collection



Photograph (2003.58.5.2)
June 24, 1956,
Pagedas Family Collection



Photograph (2003.58.5.3)
June 24, 1956,
Pagedas Family Collection



Photograph (2003.58.5.4)
June 24, 1956,
Pagedas Family Collection



Photograph (2003.58.5.5)
June 24, 1956,
Pagedas Family Collection



Photograph (2003.58.5.6)
June 24, 1956,
Pagedas Family Collection



Tablecloth (2004.14.1.A)
1950,



Napkin (2004.14.1.B.1)
1950,



Napkin (2004.14.1.B.10)
1950,



Napkin (2004.14.1.B.11)
1950,



Napkin (2004.14.1.B.12)
1950,



Napkin (2004.14.1.B.2)
1950,



Napkin (2004.14.1.B.3)
1950,



Napkin (2004.14.1.B.4)
1950,



Napkin (2004.14.1.B.5)
1950,



Napkin (2004.14.1.B.6)
1950,



Napkin (2004.14.1.B.7)
1950,



Napkin (2004.14.1.B.8)
1950,



Napkin (2004.14.1.B.9)
1950,



Tablecloth (2004.14.2.A)
1950s,



Napkin (2004.14.2.B.1)
1950s,



Napkin (2004.14.2.B.10)
1950s,



Napkin (2004.14.2.B.11)
1950s,



Napkin (2004.14.2.B.12)
1950s,



Napkin (2004.14.2.B.2)
1950s,



Napkin (2004.14.2.B.3)
1950s,



Napkin (2004.14.2.B.4)
1950s,



Napkin (2004.14.2.B.5)
1950s,



Napkin (2004.14.2.B.6)
1950s,



Napkin (2004.14.2.B.7)
1950s,



Napkin (2004.14.2.B.8)
1950s,



Napkin (2004.14.2.B.9)
1950s,



Photograph (2004.23.2)
1955,



Doily (2004.5.1.A)
1950s,



Doily (2004.5.1.B)
1950s,



Pillow (2004.5.16)
1950s,



Pillow (2004.5.17)
circa 1950,



Gloves (2004.8.23.A)
circa 1950



Glove (2004.8.23.B)
1950s,



Photograph (2005.16.1)
1957



Blanket (2005.25.1)
1946 – 1950,



Blanket (2005.25.2)
1946 – 1955,



Bedspread (2005.25.3)
1946 – 1950



Mortar (2005.27.2.A)
1950s
Olga's Collection



Pestle (2005.27.2.B)
1950s, 1950s
Olga's Collection



Ricer (2005.30.10)
February 11, 2013, 1900 – 1960
BARBATSULY



Grater (2005.30.14)
February 11, 2013, 1940 – 1960
BARBATSULY



Cruet (2005.30.8)
February 11, 2013, 1940 – 1960
BARBATSULY



Photograph (2005.4.4)
June 1954,
Magda's Collection



Certificate, Naturalization (2006.11.4)
June 11, 1953,



Mill, Nut (2006.13.3)
1932 – 1950
Zaverdas Family Collection



Photograph (2006.14.2)
1957 – 1958



Card, Souvenir (2006.15.1)
1950,



Passport (2006.19.100)
June 28, 1951,



Certificate, Immigration (2006.19.101)
September 19, 1951,



Photograph (2006.19.67)
1955,



Photograph (2006.19.68)
1955,



Photograph (2006.19.71)
1955,



Grinder (2006.19.82.A)
1950,



Photograph (2006.20.5)
June 14, 1950,



Cleaver (2006.21.2)
February 27, 2013, 1882 – 1969



Gown, Wedding (2006.22.17.A)
October 20, 1951,
LOUIS MITCHELL ESTATE



Slip (2006.22.17.B)
October 20, 1951,
LOUIS MITCHELL ESTATE



Stefana (2006.22.18.A)
October 20, 1951,
LOUIS MITCHELL ESTATE



Veil (2006.22.18.B)
October 20, 1951,
LOUIS MITCHELL ESTATE



Photograph (2006.26.10)
1957,



Program (2006.26.15)
November 8, 1953,



Photograph (2006.26.8)
1957,



Photograph (2007.17.10)
1956,



Photograph (2007.17.11)
1956,



Photograph (2007.17.18)
1950-1960



Photograph (2007.17.3)
1955



Photograph (2007.17.4)
June 1955,



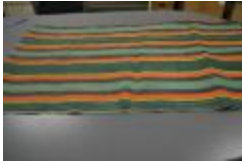
Photograph (2007.17.6)
1950s,



Photograph (2007.17.7)
1956,



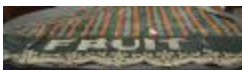
Photograph (2007.17.8)
1956,



Awning (2007.22.1.A)
1940 – 1959



Awning (2007.22.1.B)
Circa 1940 – 1950, 1940 – 1959



Awning (2007.22.1.C)
Circa 1940 – 1950, 1949 – 1959



Kandili (2007.27.1)
1900 – 1950
Angela's Collection



Photograph (2007.3.38)
1956,
Angelo's Bakery



Photograph (2007.3.41)
1956,
Angelo's Bakery



Photograph (2007.3.42)
1956,
Angelo's Bakery



Photograph (2007.3.43)
December 1956,
Angelo's Bakery



Photograph (2007.38.2)
1950,



Photograph (2007.38.3)
1952,



Photograph (2007.38.4)
1950,



Photograph (2007.38.5)
1950—1953



Photograph (2007.38.6.a)
February 24, 1952,



Photograph (2007.38.7)
June 24, 1952,



Photograph (2007.4.7)
1957—1958



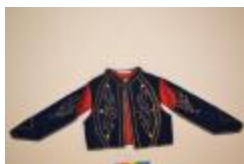
Photograph (2007.4.8)
1957–1958



Fez (2007.42.1.1)
1950s,



Shirt (2007.42.2.1)
1950s,



Vest (2007.42.2.2)
1950s,



Skirt, Foustanella (2007.42.2.3)
1950s,



Fez (2007.42.2.4)
1950s,



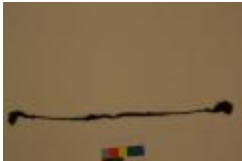
Stocking (2007.42.2.5.A)
1950s,



Stocking (2007.42.2.5.B)
1950s,



Sash (2007.42.2.6)
1950s,



Belt (2007.42.2.7)
1950s,



Shoe, Tsarouxia (2007.42.2.8.A)
1950s,



Shoe, Tsarouxia (2007.42.2.8.B)
1950s,



Photograph (2007.46.1)
1950,



Photograph (2007.46.12)
1950s,



Photograph (2007.46.16)
1950s,



Photograph (2007.46.21)
1950s,



Photograph (2007.46.26)
1950,



Photograph (2007.46.7)
1950s,



Comb (2007.48.1)
1950s
Sandra's Collection



Block, Printing (2008.37.1)
1957 - 2009
Greek Art Printing Company Artifact Collection



Block, Printing (2008.37.2)
1957 - 2009
Greek Art Printing Company Artifact Collection



Block, Printing (2008.37.21)
1863 - 1973
Greek Art Printing Company Artifact Collection



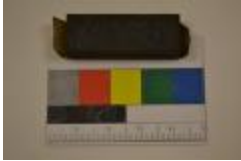
Block, Printing (2008.37.24)
1921 - 1996
Greek Art Printing Company Artifact Collection



Block, Printing (2008.37.29)
June 2, 1950,
Greek Art Printing Company Artifact Collection



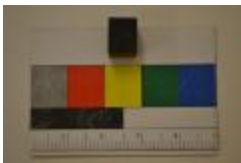
Block, Printing (2008.37.36)
1948 – 1984
Greek Art Printing Company Artifact Collection



Block, Printing (2008.37.38)
1956 – 1984
Greek Art Printing Company Artifact Collection



Block, Printing (2008.37.41)
1943 – 1958
Greek Art Printing Company Artifact Collection



Block, Printing (2008.37.44)
1959 – 1968
Greek Art Printing Company Artifact Collection



Block, Printing (2008.37.47)
1954 – 1976
Greek Art Printing Company Artifact Collection



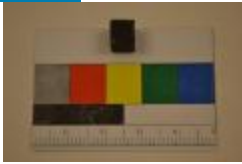
Block, Printing (2008.37.50)
June 20, 1959,
Greek Art Printing Company Artifact Collection



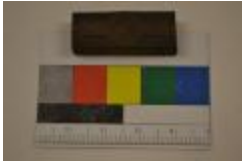
Block, Printing (2008.37.53)
20th century
Greek Art Printing Company Artifact Collection



Block, Printing (2008.37.56)
March 25, 1952,
Greek Art Printing Company Artifact Collection



Block, Printing (2008.37.60)
1945 – 1979
Greek Art Printing Company Artifact Collection



Block, Printing (2008.37.62)
1959 – 1961
Greek Art Printing Company Artifact Collection



Block, Printing (2008.37.68)
1950 – 1964
Greek Art Printing Company Artifact Collection



Photograph (2008.9.1)
circa 1950,



Photograph (2008.9.2)
1945 – 1950



Medal, Commemorative (2009.1.3)
1956
Peter's Collection



Medal, Commemorative (2009.1.5)
1955 – 1965
Peter's Collection



Medal, Commemorative (2009.1.6)
1959
Peter's Collection



Photograph (2009.1.7.13)
1956



Photograph (2010.11.10)
1954,



Photograph (2010.11.5)
1954,



Photograph (2010.11.6)
1955,



Photograph (2010.11.7)
1954



Photograph (2010.11.8)
1955,



Photograph (2010.11.9)
November 1, 1954,



Certificate (2010.2.1)
February 4, 1954,



Block, Printing (2010.26.1)
1940 – 1967



Block, Printing (2010.26.10)
1952, 1904 – 1967



Block, Printing (2010.26.11)
1940 – 1967



Block, Printing (2010.26.12)
1940 – 1967



Block, Printing (2010.26.13)
1940-1967



Block, Printing (2010.26.14)
1940-1967



Block, Printing (2010.26.15)
1940-1967



Block, Printing (2010.26.16)
1940-1967



Block, Printing (2010.26.17)
1940-1967



Block, Printing (2010.26.18)
1959, 1940-1967



Block, Printing (2010.26.19)
1940–1967



Block, Printing (2010.26.2)
1940–1967



Block, Printing (2010.26.20)
1940–1967



Block, Printing (2010.26.21)
1940–1967



Block, Printing (2010.26.22)
1940–1967



Block, Printing (2010.26.23)
1952, 1940–1967



Block, Printing (2010.26.24)
1940–1967



Block, Printing (2010.26.25)
1940 - 1967



Block, Printing (2010.26.26)
1940 - 1967



Block, Printing (2010.26.27)
1940 - 1967



Block, Printing (2010.26.28)
1940 - 1967



Block, Printing (2010.26.29)
1940 - 1967



Block, Printing (2010.26.3)
1940 - 1967



Block, Printing (2010.26.30)
1940 - 1967



Block, Printing (2010.26.31)
1940 - 1967



Block, Printing (2010.26.32)
1940 – 1967



Block, Printing (2010.26.33)
1940 – 1967



Block, Printing (2010.26.34)
1940 – 1967



Block, Printing (2010.26.35)
1940 – 1967



Block, Printing (2010.26.36)
1940 – 1967



Block, Printing (2010.26.37)
1940 – 1967



Block, Printing (2010.26.38)
1940 – 1967



Block, Printing (2010.26.4)
1940 – 1967



Block, Printing (2010.26.5)
1940 – 1967



Block, Printing (2010.26.6)
1940 – 1967



Block, Printing (2010.26.7)
1940 – 1967



Block, Printing (2010.26.8)
1940 – 1967



Block, Printing (2010.26.9)
1940 – 1967



Photograph (2010.4.1)
1950 – 1955



Photograph (2010.4.2)
1950 – 1955



Photograph (2010.9.1)
1950



Purse (2011.11.1)
1950s,



Newsletter (2011.6.183)
May 1959,



Photograph (2011.7.112)
1950s,
Alex's Candy Shop



Box (2012.12.1)
February 27, 2012, 1904 – 1967
Ting-a-Ling Candies



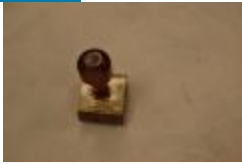
Rubber Stamp (2012.12.10)
February 27, 2012, 1904 – 1967



Rubber Stamp (2012.12.11)
February 27, 2012, 1904 – 1967



Block, Printing (2012.12.12)
February 27, 2012, 1904 – 1967



Rubber Stamp (2012.12.2)
February 27, 2012, 1904 – 1967



Rubber Stamp (2012.12.3)
February 27, 2012, 1904 – 1967



Rubber Stamp (2012.12.4)
February 27, 2012, 1904 – 1967



Rubber Stamp (2012.12.5)
February 27, 2012, 1904 – 1967



Rubber Stamp (2012.12.6)
February 27, 2012, 1904 – 1967



Rubber Stamp (2012.12.7)
February 27, 2012, 1904 – 1967



Rubber Stamp (2012.12.8)
February 27, 2012, 1904 – 1967



Rubber Stamp (2012.12.9)
February 27, 2012, 1904 – 1967



Thimble (2012.13.1)
1904 – 1967



Thimble (2012.13.2)
1904 - 1967



Thimble (2012.13.3)
1904 - 1967



Photograph (2012.40.12)
1950,



Photograph (2012.40.15)
1954,



Photograph (2012.44.1)
1950s



Photograph (2012.44.2)
1950s



Photograph (2012.44.3)
1950s



Photograph (2012.51.13)
1951



Photograph (2012.51.8)
1950s,



Photograph (2012.51.9)
1950s,



Frame, Picture (2012.8.1)
February 27, 2012, 1904 – 1967



Doily (2013.1.100)
January 25, 2013, 1930 – 1960
Celia's Textile Collection



Handkerchief (2013.1.101)
January 25, 2013, 1930 – 1960
Celia's Textile Collection



Handkerchief (2013.1.102)
January 25, 2013, 1930 – 1960
Celia's Textile Collection



Handkerchief (2013.1.103)
January 25, 2013, 1930 – 1960
Celia's Textile Collection



Doily (2013.1.104)
January 25, 2013, 1930 – 1960
Celia's Textile Collection



Doily (2013.1.105)
January 25, 2013, 1930 – 1960
Celia's Textile Collection



Doily (2013.1.106)
January 25, 2013, 1930 – 1960
Celia's Textile Collection



Doily (2013.1.107)
January 25, 2013, 1930 – 1960
Celia's Textile Collection



Doily (2013.1.108)
January 25, 2013, 1930 – 1960
Celia's Textile Collection



Doily (2013.1.109)
January 25, 2013, 1930 – 1960
Celia's Textile Collection



Doily (2013.1.110)
January 25, 2013, 1930 – 1960
Celia's Textile Collection



Doily (2013.1.111)
January 25, 2013, 1930 – 1960
Celia's Textile Collection



Doily (2013.1.112)
January 25, 2013, 1930 – 1960
Celia's Textile Collection



Doily (2013.1.113)
January 25, 2013, 1930 – 1960
Celia's Textile Collection



Doily (2013.1.114)
January 25, 2013, 1930 – 1960
Celia's Textile Collection



Doily (2013.1.115)
January 25, 2013, 1930 – 1960
Celia's Textile Collection



Doily (2013.1.116)
January 25, 2013, 1930 – 1960
Celia's Textile Collection



Doily (2013.1.117)
January 25, 2013, 1930 – 1960
Celia's Textile Collection



Doily (2013.1.118)
January 25, 2013, 1930 – 1960
Celia's Textile Collection



Doily (2013.1.119)
January 25, 2013, 1930 – 1960
Celia's Textile Collection



Doily (2013.1.120)
January 25, 2013, 1930 – 1960
Celia's Textile Collection



Doily (2013.1.121)
January 25, 2013, 1930 – 1960
Celia's Textile Collection



Doily (2013.1.122)
January 25, 2013, 1930 – 1960
Celia's Textile Collection



Doily (2013.1.123)
January 25, 2013, 1930 – 1960
Celia's Textile Collection



Doily (2013.1.124)
January 25, 2013, 1930 – 1960
Celia's Textile Collection



Doily (2013.1.125)
January 25, 2013, 1930 – 1960
Celia's Textile Collection



Doily (2013.1.126)
January 25, 2013, 1930 – 1960
Celia's Textile Collection



Doily (2013.1.127)
January 25, 2013, 1930 – 1960
Celia's Textile Collection



Doily (2013.1.128)
January 25, 2013, 1930 – 1960
Celia's Textile Collection



Doily (2013.1.129)
January 25, 2013, 1930 – 1960
Celia's Textile Collection



Doily (2013.1.130)
January 25, 2013, 1930 – 1960
Celia's Textile Collection



Doily (2013.1.131)
January 25, 2013, 1930 – 1960
Celia's Textile Collection



Doily (2013.1.132)
January 25, 2013, 1930 – 1960
Celia's Textile Collection



Doily (2013.1.133)
January 25, 2013, 1930 – 1960
Celia's Textile Collection



Doily (2013.1.134)
January 25, 2013, 1930 – 1960
Celia's Textile Collection



Doily (2013.1.135)
January 25, 2013, 1930 – 1960
Celia's Textile Collection



Doily (2013.1.136)
January 25, 2013, 1930 – 1960
Celia's Textile Collection



Doily (2013.1.137)
January 25, 2013, 1930 – 1960
Celia's Textile Collection



Doily (2013.1.138)
January 25, 2013, 1930 – 1960
Celia's Textile Collection



Doily (2013.1.139)
January 25, 2013, 1930 – 1960
Celia's Textile Collection



Doily (2013.1.140)
January 25, 2013, 1930 – 1960
Celia's Textile Collection



Doily (2013.1.141)
January 25, 2013, 1930 – 1960
Celia's Textile Collection



Doily (2013.1.142)
January 25, 2013, 1930 – 1960
Celia's Textile Collection



Doily (2013.1.143)
January 25, 2013, 1930 – 1960
Celia's Textile Collection



Doily (2013.1.144)
January 25, 2013, 1930 – 1960
Celia's Textile Collection



Doily (2013.1.145)
January 25, 2013, 1930 – 1960
Celia's Textile Collection



Doily (2013.1.146)
January 25, 2013, 1930 – 1960
Celia's Textile Collection



Doily (2013.1.147)
January 25, 2013, 1930 – 1960
Celia's Textile Collection



Doily (2013.1.148)
January 25, 2013, 1930 – 1960
Celia's Textile Collection



Doily (2013.1.149)
January 25, 2013, 1930 – 1960
Celia's Textile Collection



Doily (2013.1.150)
January 25, 2013, 1930 – 1960
Celia's Textile Collection



Doily (2013.1.151)
January 25, 2013, 1930 – 1960
Celia's Textile Collection



Doily (2013.1.152)
January 25, 2013, 1930 – 1960
Celia's Textile Collection



Doily (2013.1.153)
January 25, 2013, 1930 – 1960
Celia's Textile Collection



Doily (2013.1.154)
January 25, 2013, 1930 – 1960
Celia's Textile Collection



Doily (2013.1.155)
January 28, 2013, 1930 – 1960
Celia's Textile Collection



Doily (2013.1.156)
January 28, 2013, 1930 – 1960
Celia's Textile Collection



Doily (2013.1.157)
January 28, 2013, 1930 – 1960
Celia's Textile Collection



Doily (2013.1.158)
January 28, 2013, 1930 – 1960
Celia's Textile Collection



Doily (2013.1.159)
January 28, 2013, 1930 – 1960
Celia's Textile Collection



Doily (2013.1.160)
January 28, 2013, 1930 – 1960
Celia's Textile Collection



Doily (2013.1.161)
January 28, 2013, 1930 – 1960
Celia's Textile Collection



Doily (2013.1.162)
January 28, 2013, 1930 – 1960
Celia's Textile Collection



Doily (2013.1.163)
January 28, 2013, 1930 – 1960
Celia's Textile Collection



Doily (2013.1.164)
January 28, 2013, 1930 – 1960
Celia's Textile Collection



Doily (2013.1.165)
January 28, 2013, 1930 – 1960
Celia's Textile Collection



Doily (2013.1.166)
January 28, 2013, 1930 – 1960
Celia's Textile Collection



Doily (2013.1.167)
January 28, 2013, 1930 – 1960
Celia's Textile Collection



Doily (2013.1.168)
January 28, 2013, 1930 – 1960
Celia's Textile Collection



Doily (2013.1.169)
January 28, 2013, 1930 – 1960
Celia's Textile Collection



Doily (2013.1.170)
January 28, 2013, 1930 – 1960
Celia's Textile Collection



Doily (2013.1.171)
January 28, 2013, 1930 – 1960
Celia's Textile Collection



Doily (2013.1.172)
January 28, 2013, 1930 – 1960
Celia's Textile Collection



Doily (2013.1.173)
January 28, 2013, 1930 – 1960
Celia's Textile Collection



Doily (2013.1.174)
January 28, 2013, 1930 – 1960
Celia's Textile Collection



Doily (2013.1.175)
January 28, 2013, 1930 – 1960
Celia's Textile Collection



Doily (2013.1.176)
January 28, 2013, 1930 – 1960
Celia's Textile Collection



Doily (2013.1.177)
January 28, 2013, 1930 – 1960
Celia's Textile Collection



Doily (2013.1.178)
January 28, 2013, 1930 – 1960
Celia's Textile Collection



Doily (2013.1.179)
January 28, 2013, 1930 – 1960
Celia's Textile Collection



Doily (2013.1.180)
January 28, 2013, 1930 – 1960
Celia's Textile Collection



Doily (2013.1.181)
January 28, 2013, 1930 – 1960
Celia's Textile Collection



Doily (2013.1.182)
January 28, 2013, 1930 – 1960
Celia's Textile Collection



Doily (2013.1.183)
January 28, 2013, 1930 – 1960
Celia's Textile Collection



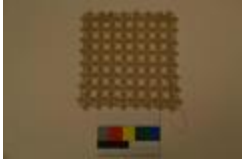
Doily (2013.1.184)
January 28, 2013, 1930 – 1960
Celia's Textile Collection



Doily (2013.1.185)
January 28, 2013, 1930 – 1960
Celia's Textile Collection



Doily (2013.1.186)
January 28, 2013, 1930 – 1960
Celia's Textile Collection



Doily (2013.1.187)
1930 – 1960
Celia's Textile Collection



Doily (2013.1.188)
January 28, 2013, 1930 – 1960
Celia's Textile Collection



Doily (2013.1.189)
January 28, 2013, 1930 – 1960
Celia's Textile Collection



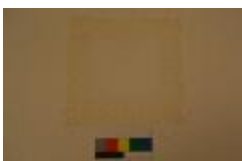
Doily (2013.1.190)
January 28, 2013, 1930 – 1960
Celia's Textile Collection



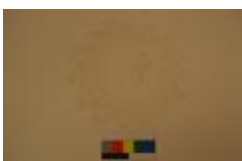
Doily (2013.1.191)
January 28, 2013, 1930 – 1960
Celia's Textile Collection



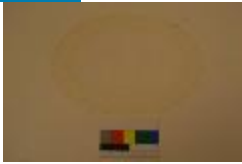
Doily (2013.1.192)
January 28, 2013, 1930 – 1960
Celia's Textile Collection



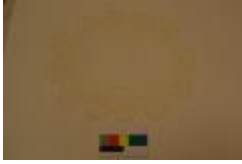
Doily (2013.1.193)
January 28, 2013, 1930 – 1960
Celia's Textile Collection



Doily (2013.1.194)
January 28, 2013, 1930 – 1960
Celia's Textile Collection



Doily (2013.1.195)
January 28, 2013, 1930 – 1960
Celia's Textile Collection



Doily (2013.1.196)
January 28, 2013, 1930 – 1960
Celia's Textile Collection



Doily (2013.1.197)
January 28, 2013, 1930 – 1960
Celia's Textile Collection



Doily (2013.1.198)
January 28, 2013, 1930 – 1960
Celia's Textile Collection



Doily (2013.1.199)
1930 – 1960
Celia's Textile Collection



Doily (2013.1.200)
January 28, 2013, 1930 – 1960
Celia's Textile Collection



Doily (2013.1.201)
January 28, 2013, 1930 – 1960
Celia's Textile Collection



Doily (2013.1.202)
January 28, 2013, 1930 – 1960
Celia's Textile Collection



Doily (2013.1.203)
January 28, 2013, 1930 – 1960
Celia's Textile Collection



Doily (2013.1.204)
January 28, 2013, 1930 – 1960
Celia's Textile Collection



Doily (2013.1.205)
January 28, 2013, 1930 – 1960
Celia's Textile Collection



Doily (2013.1.206)
January 28, 2013, 1930 – 1960
Celia's Textile Collection



Doily (2013.1.207)
January 28, 2013, 1930 – 1960
Celia's Textile Collection



Doily (2013.1.208)
January 28, 2013, 1930 – 1960
Celia's Textile Collection



Doily (2013.1.209)
January 28, 2013, 1930 – 1960
Celia's Textile Collection



Doily (2013.1.210)
January 28, 2013, 1930 – 1960
Celia's Textile Collection



Doily (2013.1.211)
January 28, 2013, 1930 – 1960
Celia's Textile Collection



Doily (2013.1.212)
January 28, 2013, 1930 – 1960
Celia's Textile Collection



Doily (2013.1.213)
January 28, 2013, 1930 – 1960
Celia's Textile Collection



Doily (2013.1.214)
January 28, 2013, 1930 – 1960
Celia's Textile Collection



Doily (2013.1.215)
January 28, 2013, 1930 – 1960
Celia's Textile Collection



Doily (2013.1.216)
January 28, 2013, 1930 – 1960
Celia's Textile Collection



Doily (2013.1.217)
January 28, 2013, 1930 – 1960
Celia's Textile Collection



Doily (2013.1.218)
January 28, 2013, 1930 – 1960
Celia's Textile Collection



Doily (2013.1.219)
January 28, 2013, 1930 – 1960
Celia's Textile Collection



Doily (2013.1.220)
January 28, 2013, 1930 – 1960
Celia's Textile Collection



Doily (2013.1.221)
January 28, 2013, 1930 – 1960
Celia's Textile Collection



Doily (2013.1.222)
January 28, 2013, 1930 – 1960
Celia's Textile Collection



Doily (2013.1.223)
January 28, 2013, 1930 – 1960
Celia's Textile Collection



Doily (2013.1.224)
January 28, 2013, 1930 – 1960
Celia's Textile Collection



Doily (2013.1.225)
1930 – 1960
Celia's Textile Collection



Doily (2013.1.226)
January 28, 2013, 1930 – 1960
Celia's Textile Collection



Doily (2013.1.227)
January 28, 2013, 1930 – 1960
Celia's Textile Collection



Towel, Show (2013.1.228)
January 28, 2013, 1930 – 1960
Celia's Textile Collection



Doily (2013.1.229)
January 28, 2013, 1930 – 1960
Celia's Textile Collection



Doily (2013.1.230)
January 28, 2013, 1930 – 1960
Celia's Textile Collection



Doily (2013.1.231)
January 28, 2013, 1930 – 1960
Celia's Textile Collection



Doily (2013.1.232)
January 28, 2013, 1930 – 1960
Celia's Textile Collection



Doily (2013.1.233)
January 28, 2013, 1930 – 1960
Celia's Textile Collection



Sheet (2013.1.234)
January 28, 2013, 1930 – 1960
Celia's Textile Collection



Doily (2013.1.235)
January 28, 2013, 1930 – 2000
Celia's Textile Collection



Doily (2013.1.236)
January 28, 2013, 1930 – 2000
Celia's Textile Collection



Doily (2013.1.237)
January 28, 2013, 1930 – 2000
Celia's Textile Collection



Doily (2013.1.238)
January 28, 2013, 1930 – 2000
Celia's Textile Collection



Pillowcase (2013.1.239)
January 28, 2013, 1930 – 2000
Celia's Textile Collection



Pillowcase (2013.1.240)
January 30, 2013, 1930 – 2000
Celia's Textile Collection



Doily (2013.1.241)
January 30, 2013, 1930 – 2000
Celia's Textile Collection



Doily (2013.1.243)
January 30, 2013, 1930 – 2000
Celia's Textile Collection



Doily (2013.1.244)
January 30, 2013, 1930 – 2000
Celia's Textile Collection



Doily (2013.1.245)
January 30, 2013, 1930 – 2000
Celia's Textile Collection



Doily (2013.1.247)
January 30, 2013, 1930 – 2000
Celia's Textile Collection



Pillowcase (2013.1.248)
January 30, 2013, 1930 – 2000
Celia's Textile Collection



Doily (2013.1.249)
January 30, 2013, 1930 – 2000
Celia's Textile Collection



Doily (2013.1.250)
January 30, 2013, 1930 – 2000
Celia's Textile Collection



Doily (2013.1.251)
January 30, 2013, 1930 – 2000
Celia's Textile Collection



Doily (2013.1.252)
January 30, 2013, 1930 – 2000
Celia's Textile Collection



Doily (2013.1.253)
January 30, 2013, 1930 – 2000
Celia's Textile Collection



Doily (2013.1.254)
January 30, 2013, 1930 – 2000
Celia's Textile Collection



Doily (2013.1.255)
1930 – 2000
Celia's Textile Collection



Doily (2013.1.256)
January 30, 2013, 1930 – 2000
Celia's Textile Collection



Doily (2013.1.257)
January 30, 2013, 1930 – 2000
Celia's Textile Collection



Doily (2013.1.258)
January 30, 2013, 1930 – 2000
Celia's Textile Collection



Doily (2013.1.259)
January 30, 2013, 1930 – 2000
Celia's Textile Collection



Doily (2013.1.260)
January 30, 2013, 1930 – 2000
Celia's Textile Collection



Doily (2013.1.261)
January 30, 2013, 1930 – 2000
Celia's Textile Collection



Doily (2013.1.262)
January 30, 2013, 1930 – 2000
Celia's Textile Collection



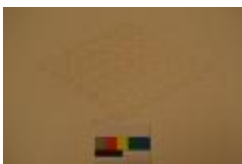
Doily (2013.1.263)
January 30, 2013, 1930 – 2000
Celia's Textile Collection



Doily (2013.1.264)
January 30, 2013, 1930 – 2000
Celia's Textile Collection



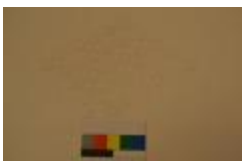
Doily (2013.1.265)
January 30, 2013, 1930 – 2000
Celia's Textile Collection



Doily (2013.1.266)
January 30, 2013, 1930 – 2000
Celia's Textile Collection



Doily (2013.1.267)
January 30, 2013, 1930 – 2000
Celia's Textile Collection



Doily (2013.1.268)
January 30, 2013, 1930 – 2000
Celia's Textile Collection



Doily (2013.1.269)
January 28, 2013, 1930 – 2000
Celia's Textile Collection



Doily (2013.1.270)
January 28, 2013, 1930 – 2000
Celia's Textile Collection



Doily (2013.1.271)
January 28, 2013, 1930 – 2000
Celia's Textile Collection



Doily (2013.1.272)
January 28, 2013, 1930 – 2000
Celia's Textile Collection



Doily (2013.1.273)
January 28, 2013, 1930 – 2000
Celia's Textile Collection



Doily (2013.1.274)
January 28, 2013, 1930 – 2000
Celia's Textile Collection



Doily (2013.1.275)
January 28, 2013, 1930 – 2000
Celia's Textile Collection



Doily (2013.1.276)
January 28, 2013, 1930 – 2000
Celia's Textile Collection



Doily (2013.1.277)
January 28, 2013, 1930 – 2000
Celia's Textile Collection



Doily (2013.1.278)
January 28, 2013, 1930 – 2000
Celia's Textile Collection



Doily (2013.1.279)
January 28, 2013, 1930 – 2000
Celia's Textile Collection



Pillowcase (2013.1.280)
January 28, 2013, 1930 – 2000
Celia's Textile Collection



Pillowcase (2013.1.281)
January 28, 2013, 1930 – 2000
Celia's Textile Collection



Tablecloth (2013.1.282)
January 28, 2013, 1930 – 2000
Celia's Textile Collection



Tablecloth (2013.1.283)
January 28, 2013, 1930 – 2000
Celia's Textile Collection



Runner, Table (2013.1.284)
January 28, 2013, 1930 – 2000
Celia's Textile Collection



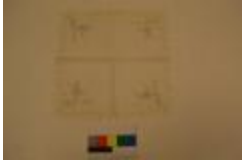
Doily (2013.1.96)
January 23, 2013, 1930 – 1960
Celia's Textile Collection



Doily (2013.1.97)
January 23, 2013, 1930 – 1960
Celia's Textile Collection



Doily (2013.1.98)
January 23, 2013, 1930 – 1960
Celia's Textile Collection



Doily (2013.1.99)
January 25, 2013, 1930 – 1960
Celia's Textile Collection



Napkin (2013.10.1)
1903 – 1985
George's Collection



Napkin (2013.10.2)
1903 – 1985
George's Collection



Napkin (2013.10.3)
1903 – 1985
George's Collection



Napkin (2013.10.4)
1903 – 1985
George's Collection



Napkin (2013.10.5)
1903 – 1985
George's Collection



Napkin (2013.10.6)
1903 – 1985
George's Collection



Tablecloth (2013.10.7)
1903 – 1985
George's Collection



Doily (2013.10.8)
1903 – 1985
George's Collection



Doily (2013.10.9)
1903 – 1985
George's Collection



Plaque (2013.2.19)
January 25, 2013, 1949 – 1951



Medal, Political (2013.2.20)
January 25, 2013, 1949 – 1951



Pin (2013.2.22)
January 25, 2013, 1930 – 1980



Painting (2013.21.29)
1959,



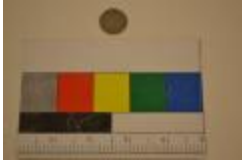
Vase (2013.22.2)
circa 1950,



Medal, Commemorative (2013.25.2)
1959,



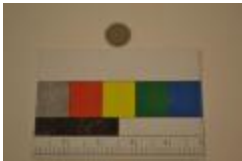
Coin (2013.5.113)
1954,
Pete Poulos Collection



Coin (2013.5.114)
1954,
Pete Poulos Collection



Coin (2013.5.115)
1954,
Pete Poulos Collection



Coin (2013.5.116)
1954,
Pete Poulos Collection



Coin (2013.5.122)
1959,
Pete Poulos Collection



Box, Cigarette (2013.5.14)
1950s,
Pete Poulos



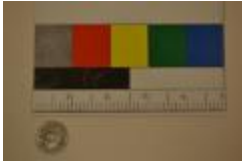
Certificate (2013.5.16)
1954,
Pete Poulos



Card, Membership (2013.5.22)
1953,
Pete Poulos



Card, Membership (2013.5.23)
1950,
Pete Poulos



Coin (2013.5.4)
1954,
Pete Poulos



Coin (2013.5.6)
1954,
Pete Poulos



Pin, Campaign (2013.5.72)
1959,
Pete Poulos



Pin, Campaign (2013.5.73)
1959,
Pete Poulos



Coin (2014.1.33)
1959,



Coin (2014.1.36)
1954,



Coin (2014.1.37)
1954,



Bottle (2014.3.1)
1950s,



Doll (2015.15.10)
1950,



Doll (2015.15.11)
1950,



Photograph (2015.15.16)
1945–1965



Doll (2015.15.8)
1950,



Doll (2015.15.9)
1950,



Stamp, Postage (2015.21.1)
1940–2005



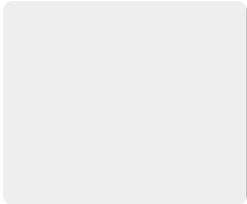
Blanket (2016.1.1)
1911–1954



Painting (2016.4.1)
1952,



Painting (2016.4.2)
1952,



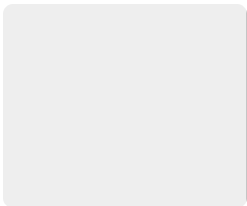
Suit (2017.2.1)
circa 1950, 1950s



Passport (2017.2.2)
1951, 1951



Passport (2017.2.3)
1951, 1951



Icon (2017.2.4)
1950, 1950



Fragment (2018.12.1)
1953,



Ribbon, Commemorative (2019.10.3)
1951



Ribbon, Commemorative (2019.10.5)
January 1951



Ribbon, Commemorative (2019.10.6)
January 1951



Ribbon, Commemorative (2019.10.7)
June 1952



Ribbon, Commemorative (2019.10.8)
June 1952



Photograph (2019.10.9)
June 1952



Cap, Garrison (2019.12.1)
October 24, 1952



Ticket, Transportation (2019.12.11)
September 2, 1953



Cap, Garrison (2019.12.3)
November 13, 1950



Cap, Garrison (2019.12.5)
December 5, 1950



Oven, Dutch (2021.21.1A)
1920 - 1959



Oven, Dutch (2021.21.1B)
1920 - 1959



Kettle (2021.21.2)
1920 - 1959



Newspaper (2021.26.10)
October 25, 1951



Newspaper (2021.26.11)
November 8, 1951



Newspaper (2021.26.12)
November 9, 1951



Newspaper (2021.26.13)
November 24, 1957



Newspaper (2021.26.14)
November 22, 1957



Newspaper (2021.26.18)
1950



Book (2022.11.5)
1950



Menu (2022.15.3)
1953 – 2007



Card, Business (2022.15.5)
1953 – 2007



Dress, Wedding (2022.21.1)
1950s



Suitcase (2022.21.3)
1950s



Menu (2022.24)
1953 - 2007



Music, Sheet (2022.4.13)
1957



Music, Sheet (2022.4.6)
1957



Music, Sheet (2022.4.8)
1957



Photograph (2022.8.3)
1950
James D. Tanos Collection



Photograph (2022.8.4)
1953
James D. Tanos Collection



Photograph (2022.8.5)
1953
James D. Tanos Collection



Book (2023.1.3)
February 1956



Book (2023.16.5)
1956



Photograph (2023.22.7)
1950s



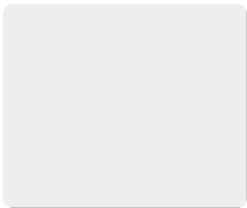
Spoon, Soup (2023.5.1)
1900-1950



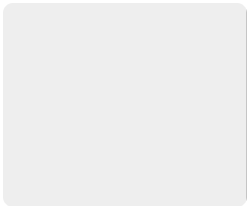
Bottle, Impossible (2023.5.2)
1940-1960



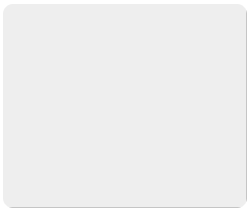
Gown, Baptismal (2023.7.30)
1950s



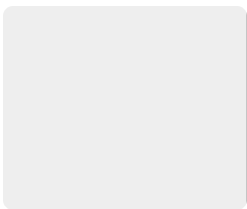
Book (2196)
1957,



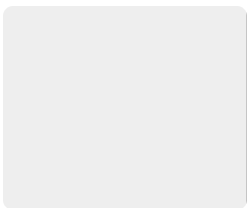
Book (2210)
1950,



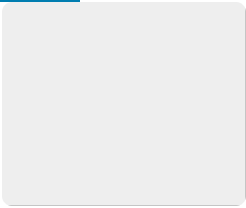
Book (2244)
1952,



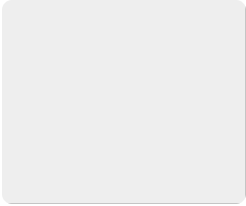
Book (2260)
1956,



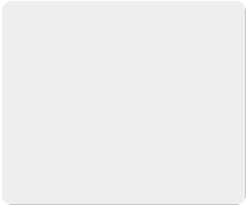
Book (2285)
1957,



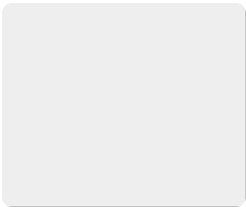
Book (2310)
1954,



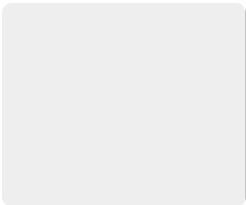
Book (2312)
1958,



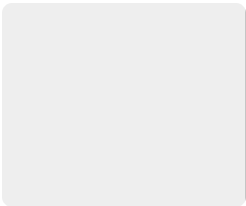
Book (2351)
1955,



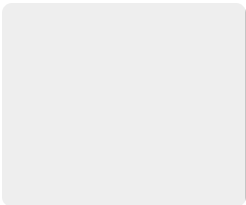
Book (2359)
1958,



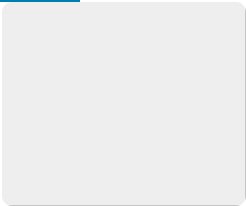
Book (2362)
1955,



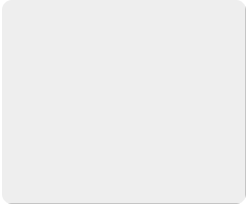
Book (2372)
1959,



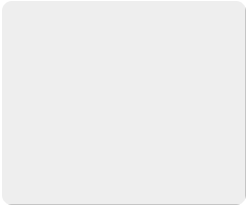
Book (2399)
1957,



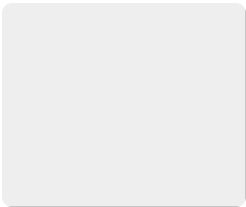
Book (2419)
1955,



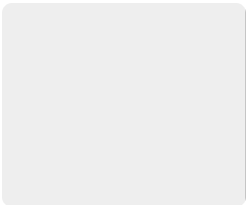
Book (2462)
1955,



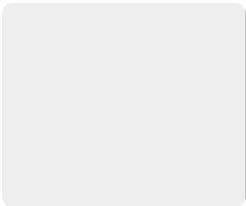
Book (2463)
1953,



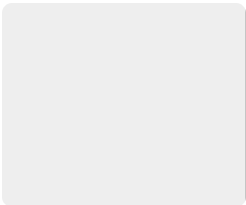
Book (2467)
1953,



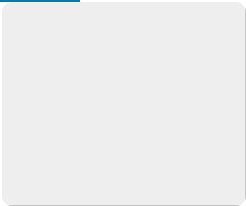
Book (2489)
1954,



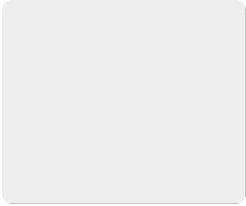
Book (2505)
1953,



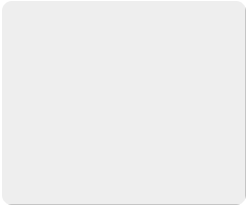
Book (2522)
20th century,



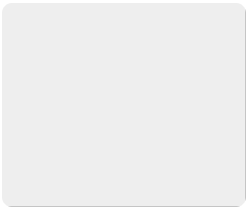
book (253643)
1958,



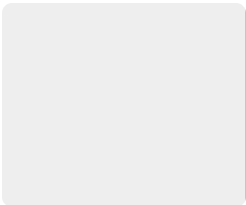
Book (2548)
1953,



Book (2549)
1955,



Book (2550)
1950,



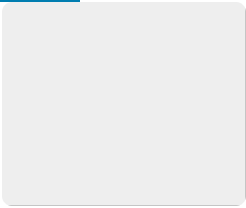
Book (2554)
1950,



Book (2590)
20th century,



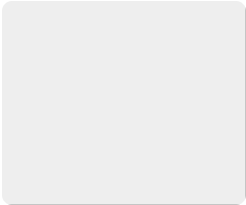
Book (2601)
20th century,



Book (2602)
1952,



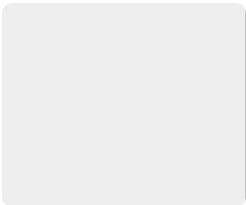
Book (2603)
20th century,



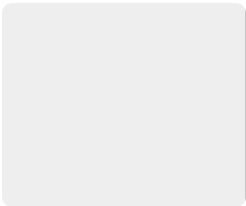
Book (2607)
1957,



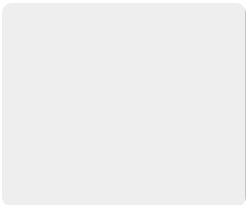
Book (2619)
20th century,



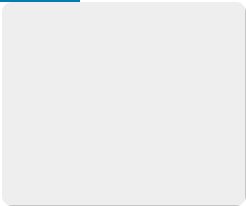
Book (2635)
1959,



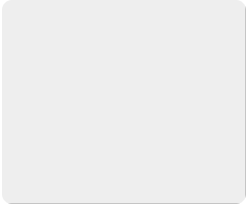
Book (2636)
1956,



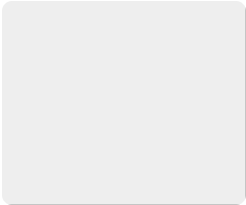
Book (2638)
1954,



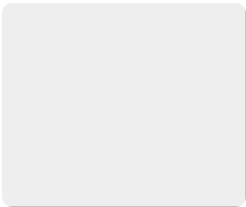
Book (2641)
1951,



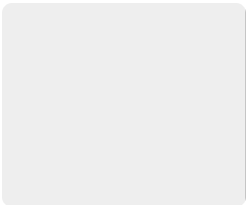
book (310368)
1954,



Book (312886269)
1953,



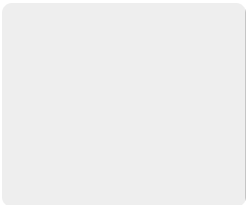
Book (346038)
1956,



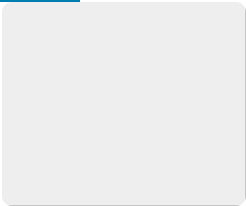
Book (3486279)
1956,



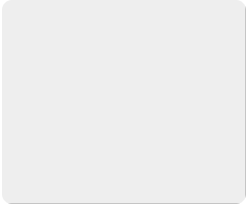
Book (3860472)
1951,



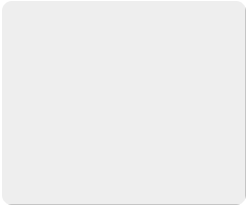
book (423492)
1956,



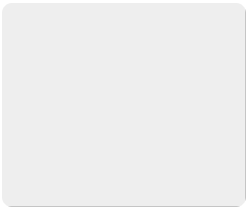
book (427470838)
1957,



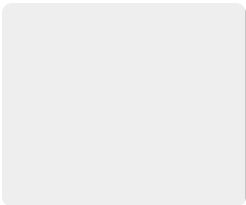
book (5809424)
1959,



book (619686)
1959,



book (6857036)
1957,



book (7223635)
1956,



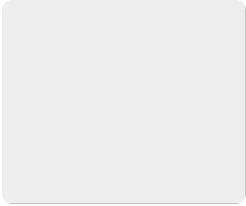
Book (APX 1348 U)
1950,



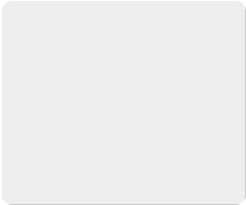
Book (APX 1362 N)
1954,



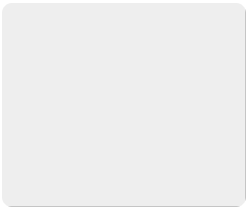
Book (APX 1608 S)
1959,



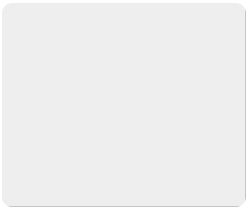
Book (B0072.D81953)
1953,
George Thodos, Ph. D. Collection



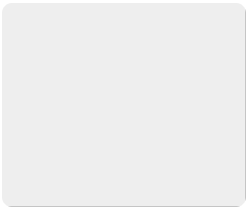
Book (B0118.S36)
1954,
English



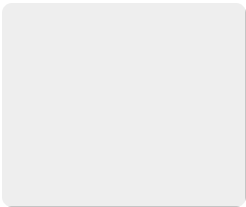
Book (B0358.F71956)
1956,
Dr. Aphrodite Pappas Collection



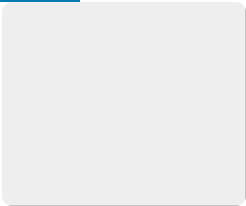
Book (B0371.A5H41952)
1952,
English



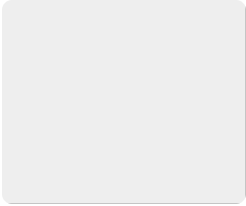
Book (B0485.T391955)
1955,
English



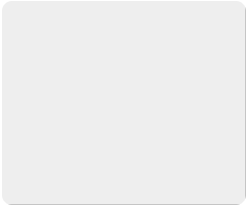
Book (B3501.C3871952)
1952,
English



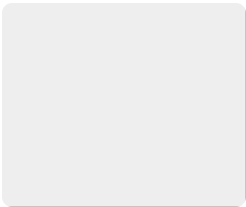
Book (BL0781.C551950)
1950,
English



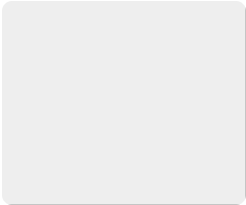
Book (BL0781.M81955)
1955,
English



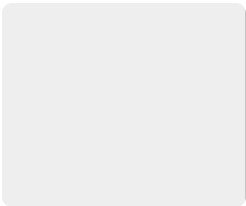
Book (BS0191.A1N4)
1952,
George Simopoulos Collection



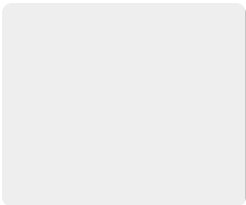
Book (BS0191.A1N41952)
1952,
George Simopoulos Collection



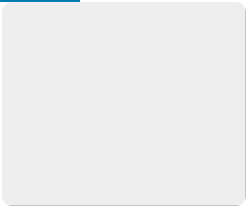
Book (BS2095.N44)
1950,
English



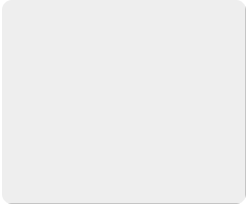
Book (BS2505.L27)
1959,
English



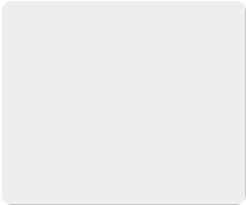
Book (BS2555.M3131955)
1955,
English



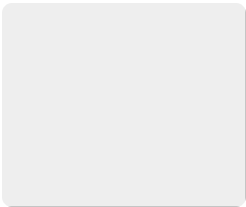
Book (BX0200.G7)
after 1954,
English



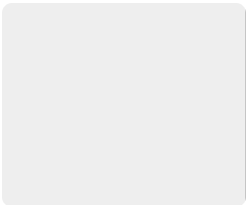
Book (BX0320.M33131952)
1952,
English



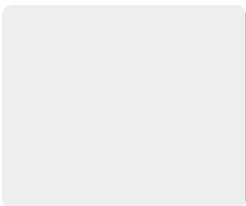
Book (BX0324.C6)
1950,
English



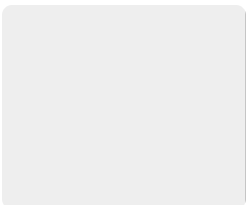
Book (BX0324.C6c.2)
1950,
English



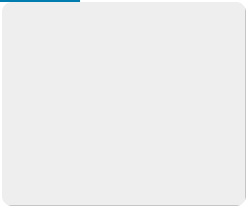
Book (BX0324.C6c.3)
1950,
English



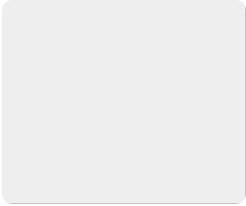
Book (BX0350.A1E41950)
1950,
English



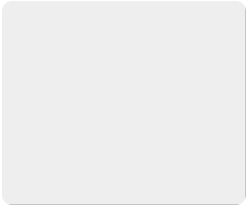
Book (BX0350.A21950)
1950,
English



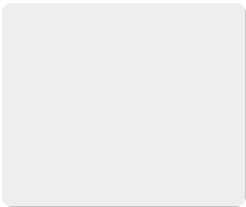
Book (BX0350.A21950c.2)
1950,
English



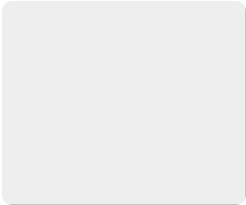
Book (BX0375.A55A451954)
1954,
English



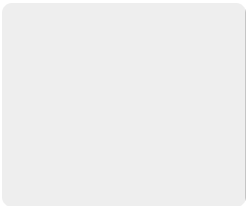
Book (BX0376.E51952)
1952,
English



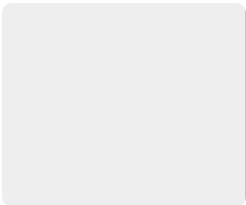
Book (BX0378.M2K6)
1958,
English



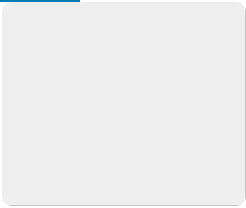
Book (BX0735.C131960)
1953,
English



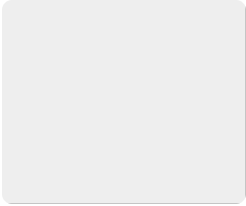
Book (BX0735.C131960c.2)
1953,
English



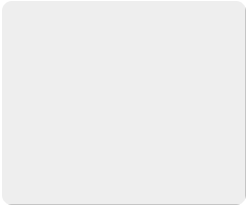
Book (BX0735.C131960c.3)
1953,
English



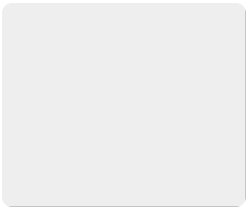
Book (BX0746.P3x)
1959,
English



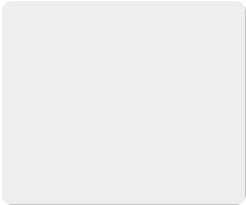
Book (BX8526.W3)
1950,
George Dimopolos Collection



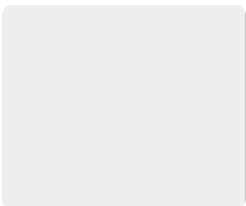
Book (CB0251.P48)
1952,
English



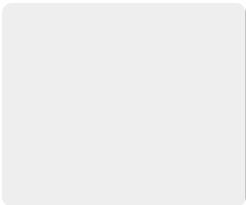
Book (CB0311.N31953)
1953,
English



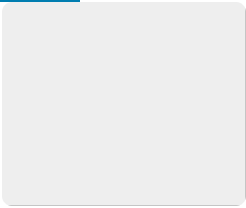
Book (D0802.G8)
1951,
English



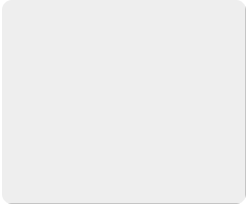
Book (D0802.G8S315)
1951,



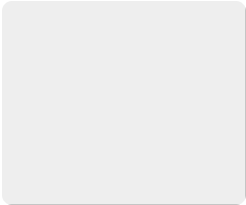
Book (D0809.G8M3)
1954,
English



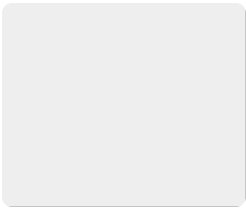
Book (D0809.G8M3c.2)
1954,
English



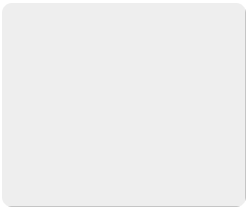
Book (DE0007.P7)
1959,
Hellenic Museum Collection



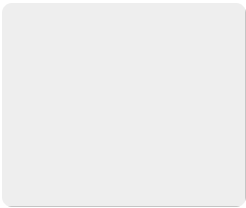
Book (DF0075.T61950a)
1953,
English



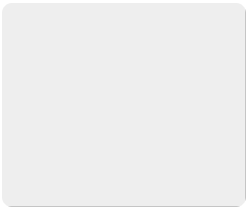
Book (DF0077.B653v.1)
1957 – 1961,
English



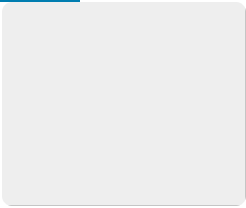
Book (DF0077.B653v.1c.2)
1957 – 1961,
English



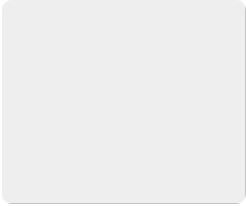
Book (DF0077.B653v.2)
1957 – 1961,
English



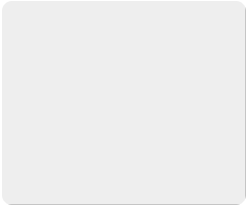
Book (DF0077.B653v.3)
1957 – 1961,
English



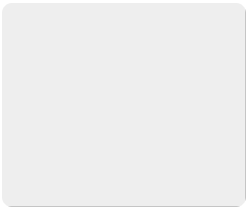
Book (DF0077.K51951)
1951,
English



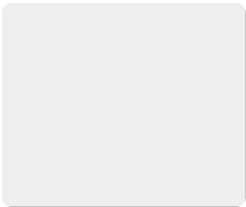
Book (DF0077.K51954c.2)
1954,
English



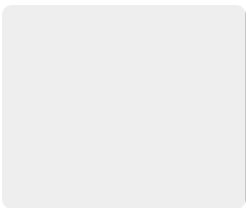
Book (DF0077.K51965c.3)
1951,
English



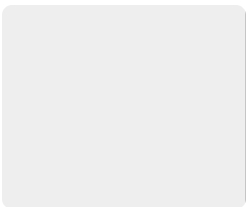
Book (DF0209.T68)
1952,
English



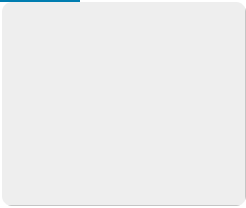
Book (DF0221.C8C618)
1958,
English



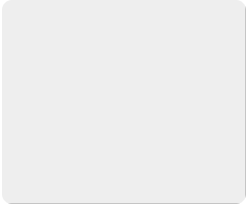
Book (DF0221.C8C61958)
1955,
English



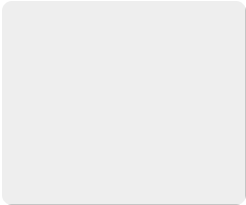
Book (DF0261.S8M55)
1952,
English



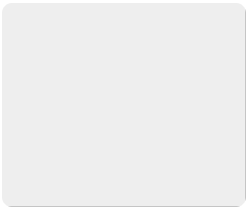
Book (DF0287.S74T481959)
1959,
English



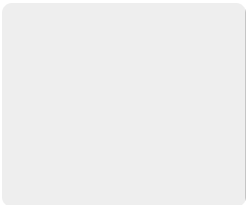
Book (DF0531.D42)
1957,
English



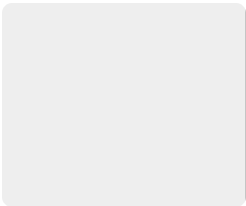
Book (DF0633.M5D7)
1959,
English



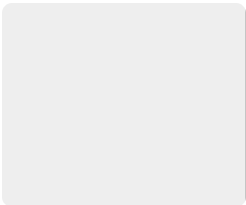
Book (DF0716.G75)
1955,
English



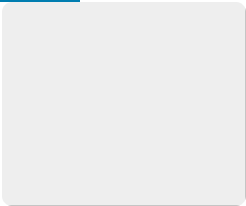
Book (DF0719.B6131951)
1951,



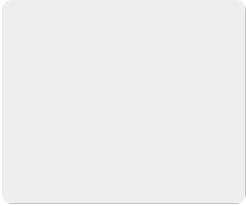
Book (DF0727.B61955)
1955,
English



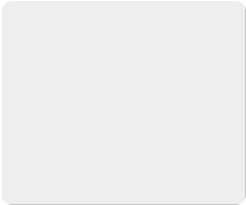
Book (DF0727.L4)
1957,
English



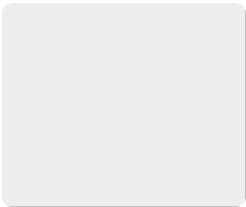
Book (DF0741.A48)
1957,
English



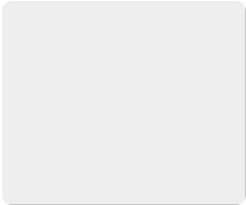
Book (DF0741.K971970)
20th century,
English



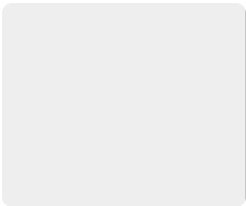
Book (DF0758.G93)
1955,
English



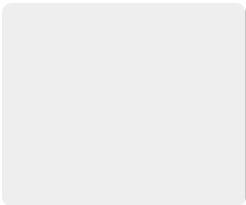
Book (DF0849.K68)
1953,
English



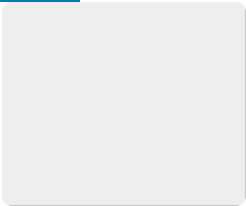
Book (DF0850.S8c.1)
1952,
English



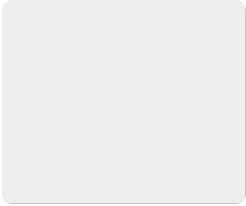
Book (DF0850.S8c.2)
1952,
English



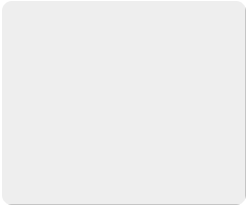
Book (DF0919.A551957xc.1)
1957,
English



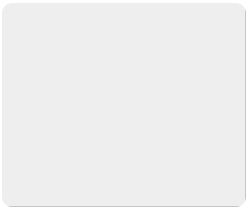
Book (DF0919.A551957xc.2)
1957,
English



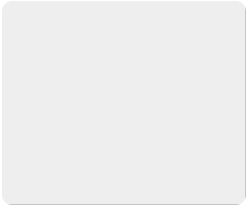
Book (DS0051.S7H61953)
1953,
English



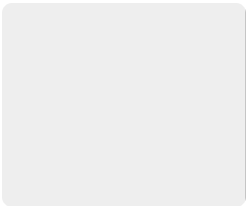
Book (DS0054.G68)
1954,
English



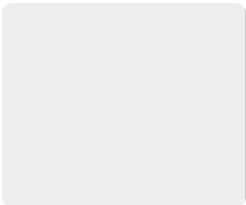
Book (DS0054.R6671954)
1954,
English



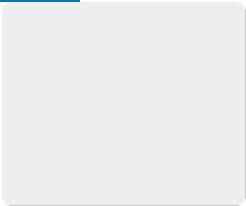
Book (DS0054.R6xc.1)
1957,
English



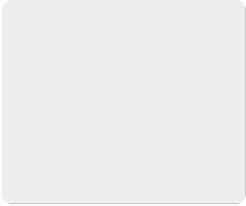
Book (DS0054.R6xc.2)
1957,
English



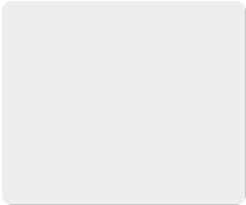
Book (DS0054.R6xc.3)
1957,
English



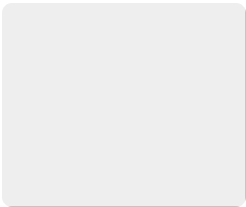
Book (DS0054.U5)
1958,
English



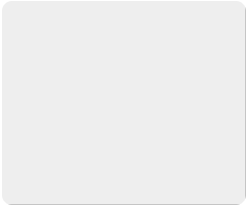
Book (E.F 11658)
1959,



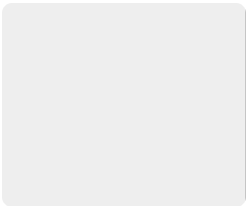
Book (E0178.C6541953)
1953,
English



Book (E0184.G7S3c.1)
1956,
English



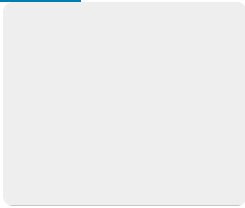
Book (E0184.G7S3c.2)
1956,
English



Book (E0184.G7S3c.3)
1956,
English



Book (EKP-553-LE)
1952,



Book (EKP-555-SE)
20th century,



Flabellum (F2012.11)
1900 – 2012



Flabellum (F2012.12)
1900 – 2012



Photograph (F2013.20)
July 21 – 23, 1951, 1951



Photograph (F2013.21)
1945 – 1953



Photograph (F2013.31)
1950s



Trophy (F2013.39)
1958,



Trophy (F2013.41)
1958,



Flag (F2013.7)
1927 - 2000



Flag (F2013.8)
1927 - 2000



Plaque (F2013.91)
1958,



Camera Box (F2014.109)
circa 1950,



Doll (F2014.143)
1925 - 1983



Trophy (F2014.21)
August 18, 1954,



Trophy (F2014.22)
August 1956,



Trophy (F2014.24)
1995,



Trophy (F2014.25)
1994,



Photograph (F2014.28)
1860 - 1970



Photograph (F2014.30)
1860 - 1970



Baseball (F2014.36)
circa 1950,



Pot, Paste (F2014.4)
1890 - 1960



Pot, Paste (F2014.5)
1890 - 1960



Photograph (F2014.86)
circa 1952,



Card, Political (F2014.87)
1958,



Certificate (F2014.88)
1958,



Certificate, Achievement (F2014.92)
November 24, 1958,



Certificate, Achievement (F2014.93)
November 21, 1952,



Certificate, Achievement (F2014.95)
December 1, 1958,



Certificate, Achievement (F2014.96)
December 2, 1952,



Photograph (F2015.16)
circa 1959,



Photograph (F2015.21)
1951,



Album, Photograph (F2015.23)
1937 – 1987



Photograph (F2015.25)
1950,



Photograph (F2016.100)
1948 – 1972



Doll (F2016.117)
1950 – 1970



Poster, Political (F2016.77)
circa 1954,



Photograph (F2017.1.2.2)
1950s
Andrew Fasseas Collection



Photograph (F2017.1.32.1)
1950s, 1950s
Andrew Fasseas Collection



Photograph (F2017.1.32.2)
1950s, 1950s
Andrew Fasseas Collection



Photograph (F2017.1.32.3)
1950s, 1950s
Andrew Fasseas Collection



Photograph (F2017.1.32.4)
1950s, 1950s
Andrew Fasseas Collection



Photograph (F2017.1.32.5)
1950s, 1950s
Andrew Fasseas Collection



Photograph (F2017.1.32.6)
1950s, 1950s
Andrew Fasseas Collection



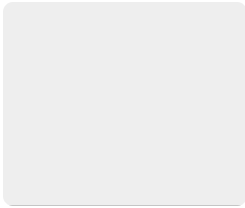
Photograph (F2017.1.32.7)
1950s, 1950s
Andrew Fasseas Collection



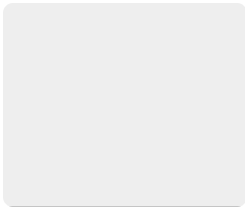
Photograph (F2022.2)
1930 – 1967



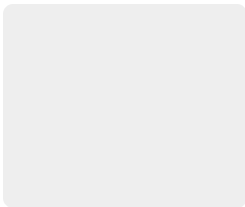
Photograph (F2022.3)
1930 – 1950



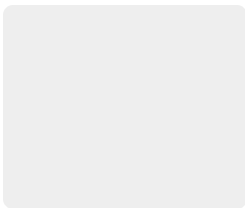
Book (HC0295.M2c.1)
1957,
English



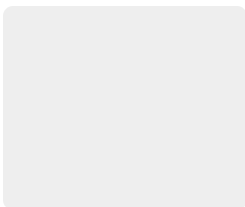
Book (HC0295.M2c.2)
1957,
English



Book (HD9145.G82G731950)
1950,
English



Book (HN0470.C7A6)
1953,
English



Book (HQ1127.S4)
1956,
English



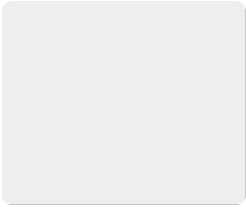
Book (IAT 659 LT)
1950,



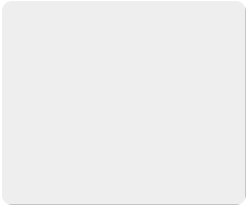
Book (IST 2752 V)
1954,



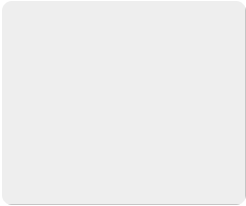
Book (IST 2906 T)
1953,



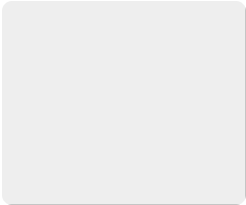
Book (IST 3227 X)
1951,



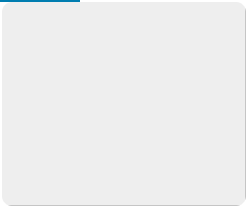
Book (IST 3884 H)
1959,



Book (IST 874 TG)
1953,



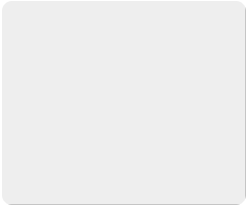
Book (N.F.-1166-FL)
20th century,



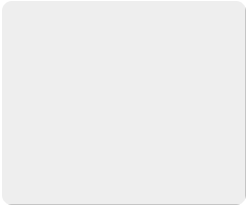
Book (N.F-303-NO)
1952,



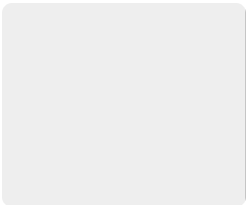
Book (N.F-457-GL)
1958,



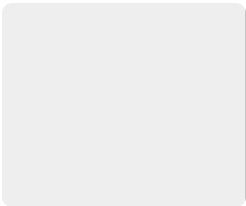
Book (N.F-504-OQ)
1953,



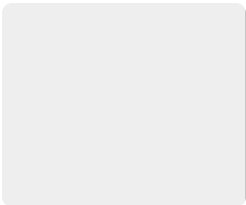
Book (N.F-890-UF)
1958,



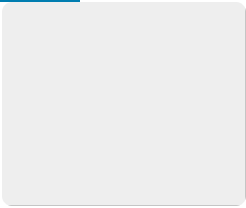
Book (N5750.A3601959)
1959,
English



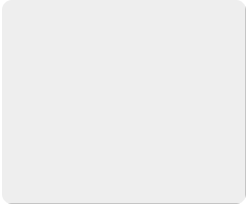
Book (N5750.R53)
1953,
English



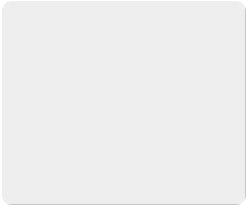
Book (N6250.E91956)
1956,
English



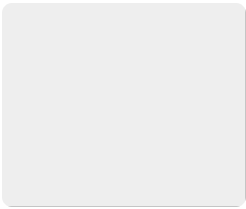
Book (NA0270.D51950c.1)
1950,
English



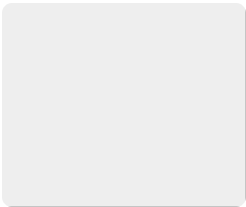
Book (NA0270.D51950c.2)
1950,
English



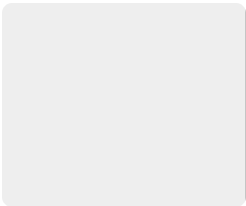
Book (NA0270.L361957)
1957,
English



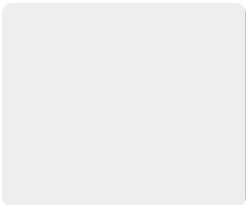
Book (NB0091.A7T45c.1)
1959,
English



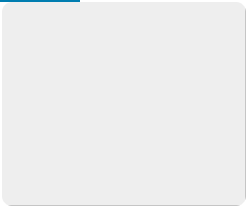
Book (NB0091.A7T45c.2)
1959,
English



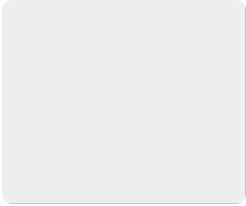
Book (ND0110.N41952)
1952,
English



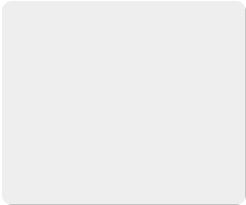
Book (ND0110.R6)
1959,
English



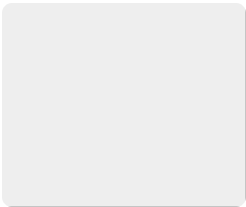
Book (ND0603.P2X88)
1956,
English



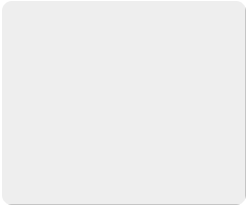
Book (ND0813.T4G51954)
1954,
English



Book (NK3840.A5)
1958,
English



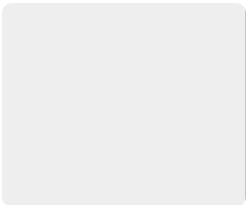
Book (NK4648.B42)
1951,
English



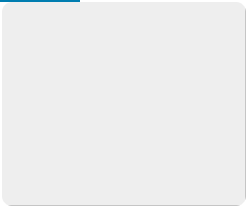
Book (NK4649.R51958)
1958,
English



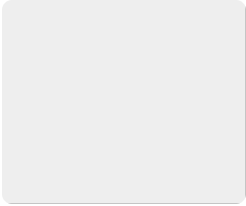
Book (O.K.E-154-F)
1957,



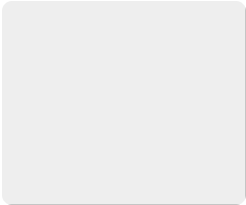
Book (OKE-2958-RK)
1954,



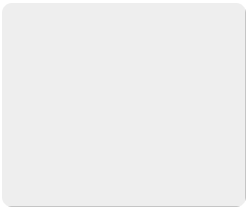
Book (P 1424 P)
1958,



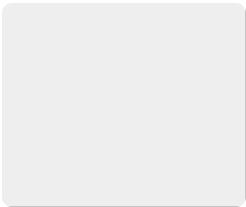
Book (PA0445.E51958)
1958,
English



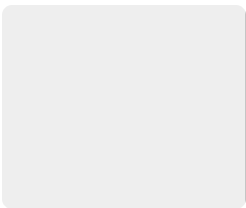
Book (PA3872.A11957)
1957,
English



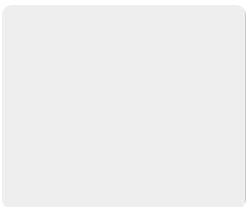
Book (PA3877.A21955)
1955,
English



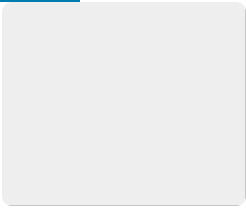
Book (PA4025.A5R51956)
1958,
English



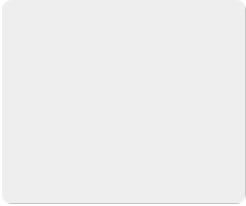
Book (PA4442.A2v.2)
1952,
English



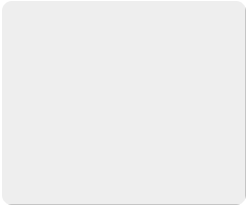
Book (PA5610.P35F3c.1)
1958,
English



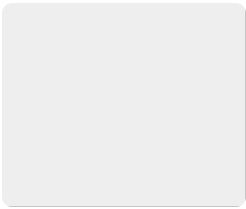
Book (PA5610.P35F3c.2)
1958,
English



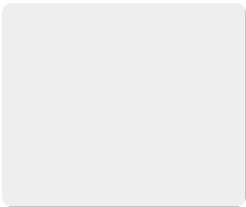
Book (PA5610.P35S7)
1958,
English



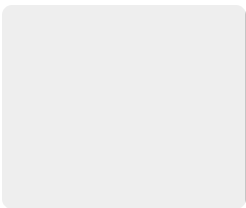
Book (PA5637.P29S51A8)
1958,
English



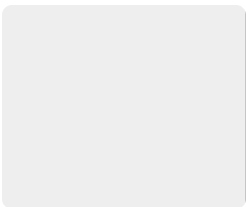
Book (PN0883.H5)
1957,
English



Book (PR6019.O9U651952)
1952,
English



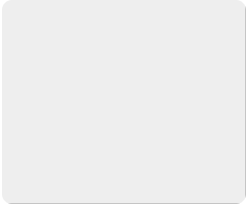
Book (PR6063.A73147)
1959,
English



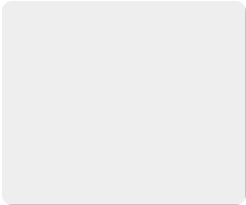
Book (Q0127.G7F371953)
1953,
English



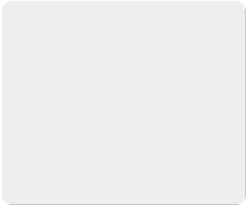
Book (THEOL 15059 ML)
1959,



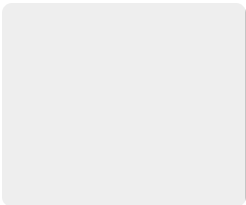
Book (THEOL-8405-RU)
1953,



Book (TX0725.M229)
1956,
English



Book (TX0725.T741952)
1952,
English



Periodical (zzzGreekStar)
1907 – 1969,
