



**Napkin (1994.33.6.A)**  
July 15, 2002,



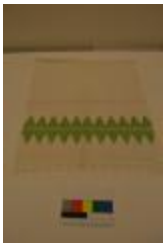
**Napkin (1994.33.6.B)**  
July 15, 2002,



**Napkin (1994.33.6.C)**  
July 15, 2002,



**Napkin (1994.33.6.D)**  
July 15, 2002,



**Towel, Hand (1994.53.1)**  
July 18, 2001,



**Towel, Dish (1996.13.2)**  
January 16, 2002,



**Napkin (1996.19.6.A)**  
July 15, 2002,



**Napkin (1996.19.6.B)**  
July 15, 2002,



**Napkin (1996.19.6.C)**  
July 15, 2002,



**Napkin (1996.19.6.D)**  
July 15, 2002,



**Napkin (1996.19.6.E)**  
July 15, 2002,



**Napkin (1996.19.6.F)**  
August 5, 2002,



**Ad, Newspaper (1996.64.15.A)**  
April 12, 2013, 1936 – 2013  
CUPID CANDIES



**Scarf (2000.1.4)**  
February 12, 2003,



**Scarf, Table (2000.1.5)**  
February 12, 2003,



**scarf (2000.1.6)**  
February 12, 2003,



**Scarf (2000.1.7)**  
February 12, 2003,



**Bust (2000.8.1)**  
2000,



**Bust (2000.8.2)**  
2000,



**Sculpture (2000.9.1)**  
2000,



**Assemblage (2000.11.2.1)**  
2000,



**Assemblage (2000.11.2.2)**  
2000,



**Assemblage (2000.11.2.3)**  
2000,



**Assemblage (2000.11.2.4)**  
2000,



**Towel, Hand (2001.17.1)**  
November 16, 2001,



**Painting (2001.19.1)**  
2001,



**Towel, Hand (2001.21.1)**  
November 16, 2001,



**Napkin (2001.21.4.A)**  
November 16, 2001,



**Napkin (2001.21.4.B)**  
November 16, 2001,



**Napkin (2001.31.29.A)**  
November 23, 2001, 1936



**Napkin (2001.31.29.B)**  
November 23, 2001, 1936



**Napkin (2001.31.29.C)**  
November 23, 2001, 1936



**Napkin (2001.31.29.D)**  
November 23, 2001, 1936



**Napkin (2001.31.29.E)**  
November 23, 2001, 1936



**Napkin (2001.31.29.F)**  
November 23, 2001, 1936



**Napkin (2001.31.29.G)**  
November 23, 2001, 1936



**Napkin (2001.31.29.H)**  
November 23, 2001, 1936



**Napkin (2001.31.29.I)**  
November 23, 2001, 1936



**Napkin (2001.31.29.J)**  
November 23, 2001, 1936



**Napkin (2001.31.29.K)**  
November 23, 2001, 1936



**Napkin (2001.31.29.L)**  
November 23, 2001, 1936



**Mat, Table (2001.31.39.A)**  
November 23, 2001, 1936



Mat, Table (2001.31.39.B)  
November 23, 2001, 1936

---



Photograph (2001.34.8.17A)  
2000

---



Photograph (2001.34.8.17B)  
2000

---



Photograph (2001.34.8.17C)  
2000  
s

---



Photograph (2001.34.8.17D)  
2000

---



Photograph (2001.34.8.17E)  
2000

---



Photograph (2001.34.8.17F)  
2000

---



Photograph (2001.34.8.17G)  
2000

---



Napkin (2001.38.27)  
November 23, 2001,

---



Handkerchief (2001.46.11.A)  
November 16, 2001,

---



Handkerchief (2001.46.11.B)  
November 16, 2001,

---



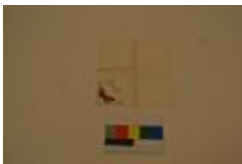
Handkerchief (2001.46.11.C)  
November 16, 2001,

---



Handkerchief (2001.46.12.A)  
November 16, 2001,

---



Handkerchief (2001.46.12.B)  
November 16, 2001,

---



Handkerchief (2001.46.12.C)  
November 16, 2001,

---



Print (2002.24.1)  
2002,



Sign (2002.26.3)  
June 2002,



Sign (2002.26.6)  
May 17, 2002,



Print (2002.55.1)  
March 2002,



Hanging (2002.58.1)  
December 2001,



Photograph (2003.35.5)  
December 2002



Card, Mourning (2003.35.8.1)  
2002,





Card, Mourning (2003.35.8.2)  
2002,



Chain, Key (2003.36.41)  
2000  
Daisy's Collection



Picture (2003.36.53.1)  
2000s,



Plate, Decorative (2003.37.11)  
1900 – 2003  
JANE SARLAS FONTANA



Deed (2004.1.6.3)  
May 30, 2005,



Print (2005.7.1)  
circa 2000 – 2002,



Print (2005.7.2)  
2000,



**Print (2005.7.3)**  
2000,



**Print (2005.7.4)**  
circa 2000,



**Print (2005.7.5)**  
2002,



**Print (2006.10.3)**  
2000,



**Certificate, Birth (2006.11.6)**  
March 15, 2000,



**Photograph (2007.11.3)**  
2000



**Photograph (2007.11.4)**  
2005



Picture (2007.14.2)  
2000s

---



Photograph (2007.32.3)  
December 26, 2004

---



Photograph (2007.32.4)  
December 2004

---



Slipper, Ballet (2007.52.1)  
1970 – 2002

---



Puppet, Shadow (2008.2.1)  
April 11, 2013, 1965 – 2001

---



Puppet, Shadow (2008.2.2)  
April 11, 2013, 1965 – 2001

---



Puppet, Shadow (2008.2.3)  
April 11, 2013, 1965 – 2001

---



**Puppet, Shadow (2008.2.4)**  
April 11, 2013, 1965 – 2001

---



**Puppet, Shadow (2008.2.5)**  
April 11, 2013, 1965 – 2001

---



**Puppet, Shadow (2008.2.6)**  
April 11, 2013, 1965 – 2001

---



**Puppet, Shadow (2008.2.7)**  
April 11, 2013, 1965 – 2001

---



**Puppet, Shadow (2008.2.8)**  
April 11, 2013, 1965 – 2001

---



**Puppet, Shadow (2008.2.9)**  
April 13, 2013, 1965 – 2001

---



**Puppet, Shadow (2008.2.10)**  
1965 – 2001

---



**Puppet, Shadow (2008.2.11)**  
April 11, 2013, 1965 – 2001

---



**Puppet, Shadow (2008.2.12)**  
April 12, 2013, 1965 – 2001

---



**Puppet, Shadow (2008.2.13)**  
April 12, 2013, 1965 – 2001

---



**Puppet, Shadow (2008.2.14)**  
April 12, 2013, 1965 – 2001

---



**Puppet, Shadow (2008.2.15)**  
April 12, 2013, 1965 – 2001

---



**Puppet, Shadow (2008.2.16)**  
April 12, 2013, 1965 – 2001

---



**Puppet, Shadow (2008.2.17)**  
April 12, 2013, 1965 – 2001

---



**Sculpture (2008.14.1)**  
2007,

---



**Block, Printing (2008.37.1)**  
1957 – 2009  
Greek Art Printing Company Artifact Collection

---



**Block, Printing (2008.37.2)**  
1957 – 2009  
Greek Art Printing Company Artifact Collection

---



**Photograph (2009.1.7.9)**  
April 2005

---



**Print (2010.5.1)**  
2004,

---



Photograph (2010.25.1)  
2008



Matchbox (2011.1.1)  
circa 2000, 1990 – 2010



Matchbox (2011.1.2)  
circa 2000, 1990 – 2010



Matchbox (2011.1.3)  
circa 2000, 1990 – 2010



Matchbox (2011.1.4)  
circa 2000, 1990 – 2010



Matchbox (2011.1.5)  
circa 2000, 1990 – 2010



Matchbox (2011.1.6)  
circa 2000, 1990 – 2010



**Matchbox (2011.1.7)**  
circa 2000, 1990 – 2010

---



**Matchbox (2011.1.8)**  
circa 2000, 1990 – 2010

---



**Matchbox (2011.1.9)**  
circa 2000, 1990 – 2010

---



**Matchbox (2011.1.10)**  
circa 2000, 1990 – 2010

---



**Matchbox (2011.1.11)**  
circa 2000, 1990 – 2010

---



**Matchbox (2011.1.12)**  
circa 2000, 1990 – 2010

---



**Shovel (2012.25.1)**  
2009 – 2012

---





**Poster (2012.40.5)**  
2004,



**Poster (2012.40.6)**  
2004,



**Photograph (2012.40.13)**  
2004



**Doily (2013.1.235)**  
January 28, 2013, 1930 – 2000  
Celia's Textile Collection



**Doily (2013.1.236)**  
January 28, 2013, 1930 – 2000  
Celia's Textile Collection



**Doily (2013.1.237)**  
January 28, 2013, 1930 – 2000  
Celia's Textile Collection



**Doily (2013.1.238)**  
January 28, 2013, 1930 – 2000  
Celia's Textile Collection



**Pillowcase (2013.1.239)**  
January 28, 2013, 1930 – 2000  
Celia's Textile Collection



**Pillowcase (2013.1.240)**  
January 28, 2013, 1930 – 2000  
Celia's Textile Collection



**Doily (2013.1.241)**  
January 30, 2013, 1930 – 2000  
Celia's Textile Collection

---



**Doily (2013.1.243)**  
January 30, 2013, 1930 – 2000  
Celia's Textile Collection

---



**Doily (2013.1.244)**  
January 30, 2013, 1930 – 2000  
Celia's Textile Collection

---



**Doily (2013.1.245)**  
January 30, 2013, 1930 – 2000  
Celia's Textile Collection

---



**Doily (2013.1.246)**  
January 30, 2013, 1930 – 2000  
Celia's Textile Collection

---



**Doily (2013.1.247)**  
January 30, 2013, 1930 – 2000  
Celia's Textile Collection

---



**Pillowcase (2013.1.248)**  
January 30, 2013, 1930 – 2000  
Celia's Textile Collection

---



**Doily (2013.1.249)**  
January 30, 2013, 1930 – 2000  
Celia's Textile Collection

---



**Doily (2013.1.250)**  
January 30, 2013, 1930 – 2000  
Celia's Textile Collection

---



**Doily (2013.1.251)**  
January 30, 2013, 1930 – 2000  
Celia's Textile Collection

---



**Doily (2013.1.252)**  
January 30, 2013, 1930 – 2000  
Celia's Textile Collection

---



**Doily (2013.1.253)**  
January 30, 2013, 1930 – 2000  
Celia's Textile Collection

---



**Doily (2013.1.254)**  
January 30, 2013, 1930 – 2000  
Celia's Textile Collection

---



**Doily (2013.1.255)**  
January 30, 2013, 1930 – 2000  
Celia's Textile Collection

---



**Doily (2013.1.256)**  
January 30, 2013, 1930 – 2000  
Celia's Textile Collection

---



**Doily (2013.1.257)**  
January 30, 2013, 1930 – 2000  
Celia's Textile Collection

---



**Doily (2013.1.258)**  
January 30, 2013, 1930 – 2000  
Celia's Textile Collection

---



**Doily (2013.1.259)**  
January 30, 2013, 1930 – 2000  
Celia's Textile Collection

---



**Doily (2013.1.260)**  
January 30, 2013, 1930 – 2000  
Celia's Textile Collection

---



**Doily (2013.1.261)**  
January 30, 2013, 1930 – 2000  
Celia's Textile Collection

---



**Doily (2013.1.262)**  
January 30, 2013, 1930 – 2000  
Celia's Textile Collection

---



**Doily (2013.1.263)**  
January 30, 2013, 1930 – 2000  
Celia's Textile Collection

---



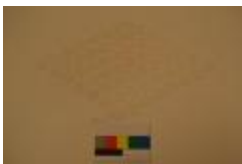
**Doily (2013.1.264)**  
January 30, 2013, 1930 – 2000  
Celia's Textile Collection

---



**Doily (2013.1.265)**  
January 30, 2013, 1930 – 2000  
Celia's Textile Collection

---



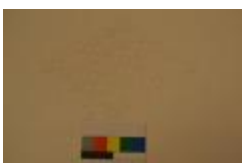
**Doily (2013.1.266)**  
January 30, 2013, 1930 – 2000  
Celia's Textile Collection

---



**Doily (2013.1.267)**  
January 30, 2013, 1930 – 2000  
Celia's Textile Collection

---



**Doily (2013.1.268)**  
January 30, 2013, 1930 – 2000  
Celia's Textile Collection

---



**Doily (2013.1.269)**  
January 28, 2013, 1930 – 2000  
Celia's Textile Collection

---



**Doily (2013.1.270)**  
January 28, 2013, 1930 – 2000  
Celia's Textile Collection

---



**Doily (2013.1.271)**  
January 28, 2013, 1930 – 2000  
Celia's Textile Collection

---



**Doily (2013.1.272)**  
January 28, 2013, 1930 – 2000  
Celia's Textile Collection

---



**Doily (2013.1.273)**  
January 28, 2013, 1930 – 2000  
Celia's Textile Collection

---



**Doily (2013.1.274)**  
January 28, 2013, 1930 – 2000  
Celia's Textile Collection

---



**Doily (2013.1.275)**  
January 28, 2013, 1930 – 2000  
Celia's Textile Collection

---



**Doily (2013.1.276)**  
January 28, 2013, 1930 – 2000  
Celia's Textile Collection

---



**Doily (2013.1.277)**  
January 28, 2013, 1930 – 2000  
Celia's Textile Collection

---



**Doily (2013.1.278)**  
January 28, 2013, 1930 – 2000  
Celia's Textile Collection

---



**Doily (2013.1.279)**  
January 28, 2013, 1930 – 2000  
Celia's Textile Collection

---



**Pillowcase (2013.1.280)**  
January 28, 2013, 1930 – 2000  
Celia's Textile Collection

---



**Pillowcase (2013.1.281)**  
January 28, 2013, 1930 – 2000  
Celia's Textile Collection

---



**Tablecloth (2013.1.282)**  
January 28, 2013, 1930 – 2000  
Celia's Textile Collection

---



**Tablecloth (2013.1.283)**  
January 28, 2013, 1930 – 2000  
Celia's Textile Collection

---



**Runner, Table (2013.1.284)**  
January 28, 2013, 1930 – 2000  
Celia's Textile Collection

---



**Mask (2013.4.1)**  
February 7, 2013, 2004  
Toula Georgakopoulos' Objects

---



**Lanyard (2013.4.2)**  
February 7, 2013, 2004  
Toula Georgakopoulos' Objects



**Poster (2013.5.145)**  
May 7, 2005,



**Poster (2013.5.147)**  
May 4, 2005,



**Painting (2013.8.1)**  
2004, 2004  
Christopher's Collection



**Jacket (2013.25.3)**  
2004,



**Jacket (2013.25.4)**  
2004,



**Plaque (2015.14.1)**  
2008,  
Helias Doundoulakis Collection



**Plaque (2015.14.9)**  
November 19, 2007,  
Helias Doundoulakis Collection



**Stamp, Postage (2015.21.1)**  
1940 – 2005



**Photograph (2016.1.2)**  
2005

---



**Glass, shot (2017.12.1)**  
1968 – 2016  
The Parthenon Restaurant Collection

---



**Glass, shot (2017.12.2)**  
1968 – 2016  
The Parthenon Restaurant Collection

---



**Holder, paper (2017.12.3)**  
1968 – 2016  
The Parthenon Restaurant Collection

---



**Book, Menu (2017.12.40)**  
1968 – 2016  
The Parthenon Restaurant Collection

---



**Book, Menu (2017.12.41)**  
1968 – 2016  
The Parthenon Restaurant Collection

---





**Book, Menu (2017.12.42)**  
1968 – 2016  
The Parthenon Restaurant Collection

---



**Plaque (2017.12.56)**  
January 19 – 26, 2006,  
The Parthenon Restaurant Collection

---



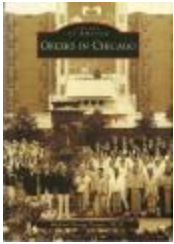
**Plaque (2017.12.57)**  
August 2006,  
The Parthenon Restaurant Collection

---



**Plaque (2017.15.9)**  
September 7, 2006

---



**Book (F 548.9 .G7 D38 2009)**  
2009

---



**Photograph (F2012.4)**  
2004,

---



**Flabellum (F2012.11)**  
1900 – 2012



**Flabellum (F2012.12)**  
1900 – 2012



**Flag (F2013.7)**  
1927 – 2000



**Flag (F2013.8)**  
1927 – 2000



**Photograph (F2013.15)**  
November 13, 2004



**Photograph (F2013.16)**  
November 13, 2004



**Photograph (F2013.18)**  
May 1, 2005



**Photograph (F2013.19)**  
May 1, 2005



**Sticker, Bumper (F2014.117.1)**  
circa 1990 – 2000,



**Sticker, Bumper (F2014.117.2)**  
circa 1990 – 2000,



**Pin, Political (F2016.5)**  
1973 – 2002



**Photograph (F2016.140)**  
February 7, 2008



**Oral History (OH1.003 (Alexopolous, Stavros))**  
April 20, 2006  
National Hellenic Museum Oral History Collection



**Oral History (OH1.004 (Anagnos, Aris))**  
February 24, 2007  
National Hellenic Museum Oral History Collection



**Oral History (OH1.007 (Anton, John))**  
October 17, 2008  
National Hellenic Museum Oral History Collection



**Oral History (OH1.008 (Apostolopoulos, J.))**  
December 22, 2004  
National Hellenic Museum Oral History Collection

---



**Oral History (OH1.009 (Athens, Andrew))**  
April 14, 2009  
National Hellenic Museum Oral History Collection

---



**Oral History (OH1.010 (Backas, Ulysses Paul))**  
May 19, 2004  
National Hellenic Museum Oral History Collection

---



**Oral History (OH1.011 (Bakalis, Maria))**  
November 28, 2005  
National Hellenic Museum Oral History Collection

---



**Oral History (OH1.015 (Bilirakis, Evelyn))**  
May 22, 2009  
National Hellenic Museum Oral History Collection

---



**Oral History (OH1.019 (Billiris, George))**  
May 28, 2009  
National Hellenic Museum Oral History Collection

---