



Album, Photograph (F2016.226)
1996 - 1997,



Amulet (2023.18.119)



Award (F2016.173)
1944



Bag, Pastry (2007.3.30)
Angelo's Bakery



Bag, Tagari (F2016.236)



Ballot (F2016.19)



Ballot (F2016.20)



Belt (2012.24.13)
1967,



Blanket (F2016.240)



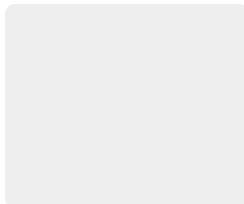
Blanket (F2016.57)



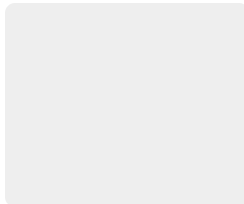
Blanket (F2016.59)



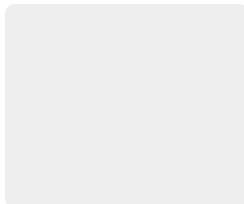
Blanket (F2016.81)



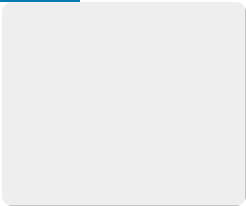
Book (1733421)
1975,



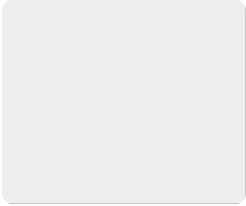
Book (45285099)
1997,



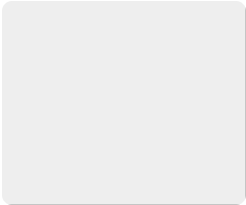
Book (60526786)
1994,



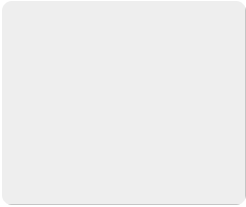
Book (D0375.J44)
English



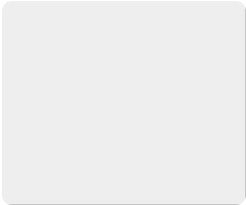
Book (D0735.G81942)
English



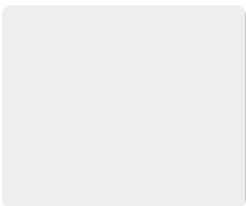
Book (D0735.G81942c.2)
English



Book (D0735.G81943)
English



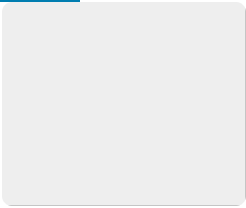
Book (D0735.G81943c.2)
English



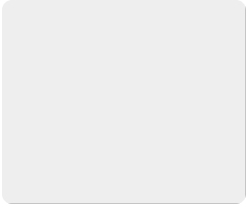
Book (D0750.B741975b)
1975,
English



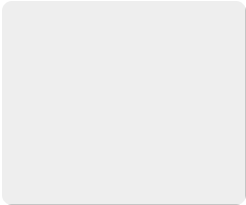
Book (D0754.G8G742001)
English



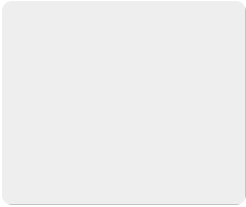
Book (D0754.T8W42)
1979,
English



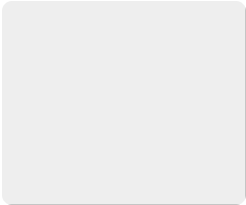
Book (D0754.T8W421985)
1979,
English



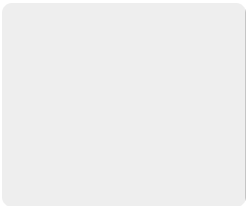
Book (D0754.T8W42c.2)
1979,
English



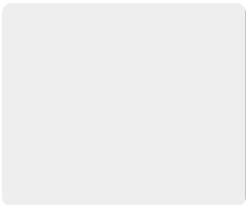
Book (D0804.S841996)
English



Book (DF0503.D84no.58)
English



Book (DF0787.T8P762000)
2000,
English



Book (DF0854.G7231999)
1999,
English

Book (DF0854.G7341999)
1999,
English

Book (DR0036.S83)
English

Book (E0183.G8S781977)
English

Book (E0840.S25A31986)
English



Bowl, Mixing (2007.3.15)
Angelo's Bakery



Box, Candy (E2016.30)
CUPID CANDIES



Bracelet (2001.18.7)
1960s,



Brush, Food (2007.3.13)
Angelo's Bakery



Brush, Food (2007.3.23)
Angelo's Bakery



Cake Filler (2007.3.10)
1900s,
Angelo's Bakery



Candlestand (F2016.87)



Cap (2023.18.103B)



Card, Membership (2023.18.105)



Certificate (1993.8.1)
1939 - 1945



Certificate (2013.2.25)
January 28, 2013, 1962



Certificate (F2016.147)



Certificate (F2016.158)
1960 – 1961



Certificate, Achievement (2023.18.129)



Certificate, Achievement (2023.18.130)



Certificate, Achievement (2023.18.131)



Certificate, Achievement (2023.18.132)



Certificate, Achievement (2023.18.133)



Certificate, Achievement (2023.18.134)



Certificate, Achievement (2023.18.135)



Certificate, Achievement (2023.18.136)



Certificate, Achievement (2023.18.137)



Certificate, Commemorative (1999.11.12)
November 30, 1969,
Arthur Peponis Collection



Certificate, Membership (F2016.174)
August 1, 1934



Coat (2023.18.103A)



Coin (2014.1.52)
1831,



Coin (2014.1.53)
1831,



Cover, Pillow (F2016.250)



Cover, Pillow (F2016.251)



Cross (2001.18.6)
1920 – 1930



Cross (2023.18.111)



Cross (2023.18.112)



Cross (2023.18.116)



Cross (2023.18.123)



Diorama (F2016.143)



Diploma (F2016.172)
1985,



Diploma (1993.8.2)



Diploma (2023.18.128)



Document (F2016.202)



Doily (F2016.51)



Doily (F2016.52)



Doll (F2016.113)



Doll (F2016.117)
1950 - 1970



Doll (F2016.118)



Doll (F2016.119)



Doll (F2016.120)



Doll (F2016.121)



Doll (F2016.82)



Doll (F2016.97)



Doll (F2016.99)



Embroidery (F2016.26)



Embroidery (F2016.27)



Embroidery (F2016.28)



Fez (F2016.122)



Fez (F2016.29)



Fez (F2016.56)



Fez (F2016.98)



Fez (2012.24.3)
1967,



Fez (2012.24.4)
1967,



Flag (F2016.249)



Flag (F2016.60)



Flag (F2016.79)



Fryer Hook Set (2007.3.11.A)
Angelo's Bakery



Fryer Hook Set (2007.3.11.B)
Angelo's Bakery



Garter (2012.24.12)
1967,



Handbill, Political (F2016.18)
1972,



Icon (F2016.55)



Icon (2023.18.106)



Icon (2023.18.107)



Icon (2023.18.114)



Icon (2023.18.115)



Icon (2023.18.124)



Icon (2023.18.126)



Invitation (F2016.190)
1987,



Jersey (2023.18.99A)



Journal (F2016.148)
1990,



Mandolin (1995.47.1.A)
1900-1905



Medal, Commemorative (F2016.80)
1930,



Mold, Cake (2007.3.16)
Angelo's Bakery



Mold, Cake (2007.3.17)
Angelo's Bakery



Mold, Cake (2007.3.18)
Angelo's Bakery



Mold, Cake (2007.3.19)
Angelo's Bakery



Mold, Cake (2007.3.2)
Angelo's Bakery



Mold, Cake (2007.3.3)
Angelo's Bakery



Mold, Cake (2007.3.4)
Angelo's Bakery



Mold, Cake (2007.3.5)
Angelo's Bakery



Mold, Cake (2007.3.7.A)
Angelo's Bakery



Mold, Cake (2007.3.7.B)
Angelo's Bakery



Mold, Cake (2007.3.8.A)
Angelo's Bakery



Mold, Cake (2007.3.8.B)
Angelo's Bakery



Music, Sheet (F2016.47)



Napkin (F2016.48)



Napkin (F2016.49)



Napkin (F2016.50)



Napkin (F2016.53)



Napkin (F2016.54)



Napkin (2007.3.46)
Angelo's Bakery



Negative, Film (F2016.196)



Negative, Film (F2016.197)



Negative, Film (F2016.198)



Negative, Film (F2016.199)



Newspaper (F2016.88)



Newspaper (F2016.106)



Oral History (Anagnostopoulos, Lampis)
November 7, 2005
National Hellenic Museum Oral History Collection (OH1)



Oral History (Anton, Gus & Bertha)
National Hellenic Museum Oral History Collection (OH1)



Oral History (Chiagouris, George)
National Hellenic Museum Oral History Collection (OH1)



Oral History (Danos, Panayotis)
National Hellenic Museum Oral History Collection (OH1)



Oral History (Doundoulakis, Helias)
National Hellenic Museum Oral History Collection (OH1)



Oral History (Kachoris, Paul J.)
November 17, 2012
National Hellenic Museum Oral History Collection (OH1)



Oral History (Kuchuris, Frances)
National Hellenic Museum Oral History Collection (OH1)



Oral History (Lemperis, Athena)
National Hellenic Museum Oral History Collection (OH1)



Oral History (Marianes, William)
National Hellenic Museum Oral History Collection (OH1)



Oral History (Moskos, Charles)
National Hellenic Museum Oral History Collection (OH1)



Oral History (Nassos, George)
National Hellenic Museum Oral History Collection (OH1)



Oral History (Olandezos, Angelos)
National Hellenic Museum Oral History Collection (OH1)



Oral History (Pahules, Gregory)
National Hellenic Museum Oral History Collection (OH1)



Oral History (Paterakis, Angela)
National Hellenic Museum Oral History Collection (OH1)



Oral History (Pattak, Paul Byron)
National Hellenic Museum Oral History Collection (OH1)



Oral History (Pekras, Thomas (BC))
Berrien County Historical Association Oral History Collection (OH2)



Painting (F2016.234)
May 2, 1976,



Painting (2023.18.109)



Painting (2023.18.110)



Pan, Baking (F2016.145)



Pan, Bread (2007.3.6)
Angelo's Bakery



Pan, Cake (2007.3.1)
Angelo's Bakery



Pants (2023.18.99B)



Paper Dispenser (2007.3.14)
Angelo's Bakery



Pendant (2023.18.117)



Pendant (2023.18.118)



Pendant (2023.18.120)



Pendant (2023.18.121)



Pendant (2023.18.122)



Pendant, Religious (2023.18.113)



Pendant, Religious (2023.18.125)



Pendant, Religious (2023.18.127)



Photograph (1994.31)



Photograph (1994.65.1W)
1911,



Photograph (1998.53.17)
1964,
Steve N. Pisanos Collection



Photograph (2000.3.21)



Photograph (2001.34.8.13)



Photograph (2006.19.28)



Photograph (2006.19.7)



Photograph (2007.3.37)
1967,
Angelo's Bakery



Photograph (2007.3.38)
1956,
Angelo's Bakery



Photograph (2007.3.39)
1970
Angelo's Bakery



Photograph (2007.3.41)
1956,
Angelo's Bakery



Photograph (2007.3.42)
1956,
Angelo's Bakery



Photograph (2007.3.43)
December 1956,
Angelo's Bakery



Photograph (2007.3.44)
1986
Angelo's Bakery



Photograph (2007.3.45)
1989
Angelo's Bakery



Photograph (2008.17.5)
December 21, 1926 – March 20, 1927,



Photograph (2023.18.1)



Photograph (2023.18.10)



Photograph (2023.18.104)



Photograph (2023.18.108)



Photograph (2023.18.11)



Photograph (2023.18.12)



Photograph (2023.18.13)



Photograph (2023.18.14)



Photograph (2023.18.16)



Photograph (2023.18.17)



Photograph (2023.18.18)



Photograph (2023.18.19)



Photograph (2023.18.2)



Photograph (2023.18.20)



Photograph (2023.18.21)



Photograph (2023.18.22)



Photograph (2023.18.23)



Photograph (2023.18.24)



Photograph (2023.18.25)



Photograph (2023.18.26)



Photograph (2023.18.27)



Photograph (2023.18.28)



Photograph (2023.18.29)



Photograph (2023.18.3)



Photograph (2023.18.31)



Photograph (2023.18.32)



Photograph (2023.18.33)



Photograph (2023.18.34)



Photograph (2023.18.35)



Photograph (2023.18.36)



Photograph (2023.18.37)



Photograph (2023.18.38)



Photograph (2023.18.39)



Photograph (2023.18.4)



Photograph (2023.18.40)



Photograph (2023.18.41)



Photograph (2023.18.42)



Photograph (2023.18.43)



Photograph (2023.18.44)



Photograph (2023.18.45)



Photograph (2023.18.46)



Photograph (2023.18.47)



Photograph (2023.18.48)



Photograph (2023.18.49)



Photograph (2023.18.5)



Photograph (2023.18.50)



Photograph (2023.18.51)



Photograph (2023.18.52)



Photograph (2023.18.53)



Photograph (2023.18.54)



Photograph (2023.18.55)



Photograph (2023.18.56)



Photograph (2023.18.57)



Photograph (2023.18.58)



Photograph (2023.18.59)



Photograph (2023.18.6)



Photograph (2023.18.60)



Photograph (2023.18.61)



Photograph (2023.18.62)



Photograph (2023.18.63)



Photograph (2023.18.64)



Photograph (2023.18.65)



Photograph (2023.18.66)



Photograph (2023.18.67)



Photograph (2023.18.68)



Photograph (2023.18.69)



Photograph (2023.18.7)



Photograph (2023.18.70)



Photograph (2023.18.71)



Photograph (2023.18.72)



Photograph (2023.18.73)



Photograph (2023.18.74)



Photograph (2023.18.75)



Photograph (2023.18.78)



Photograph (2023.18.8)



Photograph (2023.18.82)



Photograph (2023.18.83)



Photograph (2023.18.84)



Photograph (2023.18.85)



Photograph (2023.18.86)



Photograph (2023.18.87)



Photograph (2023.18.88)



Photograph (2023.18.89)



Photograph (2023.18.9)



Photograph (2023.18.90)



Photograph (2023.18.91)



Photograph (2023.18.92)



Photograph (2023.18.93)



Photograph (2023.18.94)



Photograph (2023.18.95)



Photograph (2023.18.96)



Photograph (2023.18.97)



Photograph (2023.18.98)



Photograph (F2016.100)
1948 - 1972



Photograph (F2016.101)



Photograph (F2016.102)



Photograph (F2016.103)



Photograph (F2016.104)



Photograph (F2016.105)



Photograph (F2016.107)



Photograph (F2016.108)



Photograph (F2016.109)



Photograph (F2016.110)



Photograph (F2016.111)



Photograph (F2016.112)



Photograph (F2016.130)
Return to Our Roots



Photograph (F2016.140)
February 7, 2008



Photograph (F2016.141)



Photograph (F2016.142)



Photograph (F2016.149)



Photograph (F2016.150)



Photograph (F2016.151)



Photograph (F2016.152)
1994



Photograph (F2016.153)
1994



Photograph (F2016.154)



Photograph (F2016.155)



Photograph (F2016.156)



Photograph (F2016.157)



Photograph (F2016.159)



Photograph (F2016.160)



Photograph (F2016.161)



Photograph (F2016.162)



Photograph (F2016.163)



Photograph (F2016.164)



Photograph (F2016.165)



Photograph (F2016.166)



Photograph (F2016.167)



Photograph (F2016.168)



Photograph (F2016.169)



Photograph (F2016.170)



Photograph (F2016.171)



Photograph (F2016.175)



Photograph (F2016.176)



Photograph (F2016.177)



Photograph (F2016.178)
October 22, 1993
Greek-American Community Services Collection



Photograph (F2016.179)
October 22, 1993
Greek-American Community Services Collection



Photograph (E2016.180)
October 22, 1993
Greek-American Community Services Collection



Photograph (E2016.181)
October 22, 1993
Greek-American Community Services Collection



Photograph (E2016.182)
October 11, 1991
Greek-American Community Services Collection



Photograph (E2016.183)
October 11, 1991
Greek-American Community Services Collection



Photograph (E2016.184)
October 11, 1991
Greek-American Community Services Collection



Photograph (E2016.185)
October 11, 1991
Greek-American Community Services Collection



Photograph (F2016.186)
October 11, 1991
Greek-American Community Services Collection



Photograph (F2016.187)
October 11, 1991



Photograph (F2016.188)
October 11, 1991
Greek-American Community Services Collection



Photograph (F2016.189)
October 11, 1991
Greek-American Community Services Collection



Photograph (F2016.191)
May 1988
Greek-American Community Services Collection



Photograph (F2016.192)
1988
Greek-American Community Services Collection



Photograph (F2016.193)
1988
Greek-American Community Services Collection



Photograph (F2016.194)
1988
Greek-American Community Services Collection



Photograph (F2016.195)
1988
Greek-American Community Services Collection



Photograph (F2016.2)
October 30, 1949,



Photograph (F2016.200)



Photograph (F2016.201)



Photograph (F2016.203)
October 21, 1994
Greek-American Community Services Collection



Photograph (F2016.204)
October 21, 1994
Greek-American Community Services Collection



Photograph (F2016.205)
October 21, 1994



Photograph (F2016.206)
October 21, 1994



Photograph (F2016.207)
October 21, 1994



Photograph (F2016.208)
October 21, 1994



Photograph (F2016.209)
October 21, 1994



Photograph (F2016.210)
October 21, 1994
Greek-American Community Services Collection



Photograph (F2016.211)
October 21, 1994
Greek-American Community Services Collection



Photograph (F2016.212)
September 22, 1989
Greek-American Community Services Collection



Photograph (F2016.213)
September 22, 1989
Greek-American Community Services Collection



Photograph (F2016.214)
September 22, 1989
Greek-American Community Services Collection



Photograph (F2016.215)
September 22, 1989
Greek-American Community Services Collection



Photograph (F2016.216)
September 22, 1989
Greek-American Community Services Collection



Photograph (F2016.217)
1989



Photograph (F2016.218)
September 22, 1989
Greek-American Community Services Collection



Photograph (F2016.219)
September 28, 1990
Greek-American Community Services Collection



Photograph (F2016.22)
1980s



Photograph (F2016.220)
September 28, 1990
Greek-American Community Services Collection



Photograph (F2016.221)
September 28, 1990
Greek-American Community Services Collection



Photograph (F2016.222)
September 28, 1990
Greek-American Community Services Collection



Photograph (F2016.223)
September 28, 1990
Greek-American Community Services Collection



Photograph (F2016.224)
September 28, 1990
Greek-American Community Services Collection



Photograph (F2016.225)
September 28, 1990
Greek-American Community Services Collection



Photograph (F2016.228)



Photograph (F2016.229)
July 19, 1978,



Photograph (F2016.23)
1980s



Photograph (F2016.230)



Photograph (F2016.231)



Photograph (F2016.232)



Photograph (F2016.233)



Photograph (F2016.235)



Photograph (F2016.239)
1924,



Photograph (F2016.24)
1980s



Photograph (F2016.242)



Photograph (F2016.243)



Photograph (F2016.244)



Photograph (F2016.245)



Photograph (F2016.246)



Photograph (F2016.247)



Photograph (F2016.248)



Photograph (F2016.25)
1980s



Photograph (F2016.4)



Photograph (F2016.46)



Photograph (F2016.58)
1904 – 1908



Photograph (F2016.78)
1980s



Photograph (F2017.1.51)
Andrew Fasseas Collection



Pillowcase (F2016.31)



Pillowcase (F2016.34)



Pin Campaign (F2016.12)
1983 – 1984



Pin, Campaign (F2016.13)
1980,



Pin, Campaign (F2016.14)
1974 – 1976



Pin, Campaign (F2016.15)
1978,



Pin, Campaign (F2016.16)
1991,



Pin, Campaign (F2016.17)



Pin, Campaign (F2016.7)
1988,



Pin, Campaign (F2016.8)



Pin, Campaign (F2016.9)
1991,



Pin, Campaign (F2016.10)
1966 – 1977



Pin, Campaign (F2016.11)



Pin, Diaper (2023.18.102A)



Pin, Diaper (2023.18.102B)



Pin, Diaper (2023.18.102C)



Pin, Political (F2016.5)
1973 – 2002



Pin, Political (F2016.6)
1962 – 1992



Pin, Rolling (2007.3.20)
Angelo's Bakery



Pin, Rolling (2007.3.21)
Angelo's Bakery



Pin, Rolling (2007.3.22)
Angelo's Bakery



Pin, Rolling (2007.3.29)
Angelo's Bakery



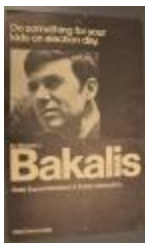
Pitcher, Measuring (2007.3.26)
Angelo's Bakery



Pitcher, Measuring (2007.3.27)
Angelo's Bakery



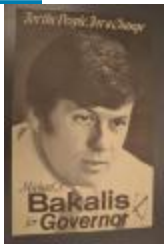
Poster (F2016.89)
1994,



Poster, Political (F2016.61)
1970,



Poster, Political (F2016.62)
1968,



Poster, Political (F2016.63)



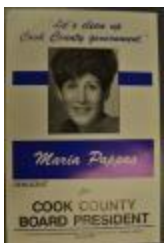
Poster, Political (F2016.64)



Poster, Political (F2016.65)



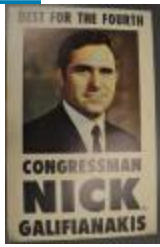
Poster, Political (F2016.66)
1991,



Poster, Political (F2016.67)



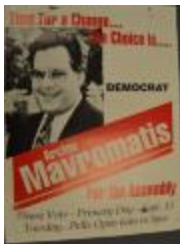
Poster, Political (F2016.68)



Poster, Political (F2016.69)



Poster, Political (F2016.70)



Poster, Political (F2016.71)
1983,



Poster, Political (F2016.72)



Poster, Political (F2016.73)
1988,



Poster, Political (F2016.74)



Poster, Political (F2016.75)



Poster, Political (F2016.77)
circa 1954,



Potholder (2007.3.25)
Angelo's Bakery



Print (F2016.227)



Ribbon, Textile (2023.18.100)



Ribbon, Textile (2023.18.101)



Scoop (2007.3.24)
Angelo's Bakery



Scraper, Dough (2007.3.12)
Angelo's Bakery



Scraper, Dough (F2016.144)



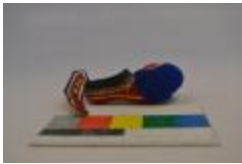
Seal, Prosforo (1993.8.3)



Shoe (F2016.237)



Shoe (F2016.238)



Shoe, Tsarouxia (F2016.115)



Shoe, Tsarouxia (F2016.116)



Sign (F2016.76)
circa 1966,



Sign, Traffic (F2016.38)



Sign, Traffic (F2016.39)



Sign, Traffic (F2016.40)



Sign, Traffic (F2016.41)



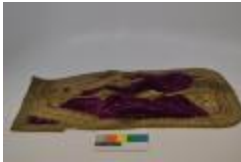
Sign, Traffic (F2016.42)



Sign, Traffic (F2016.43)



Skirt, Foustanella (2012.24.11)
1967,



Sleeve (F2016.85)



Sleeve (F2016.86)



Stand, Display (F2016.21)



Stefana (F2016.36)



Stocking (2012.24.5)
1967,



Stocking (2012.24.6)
1967,



Tablecloth (2001.18.1)
1940 – 1950



Tablecloth (F2016.32)



Tablecloth (F2016.33)



Tamboura (F2016.114)



Tie, Bow (F2016.35)



Undershirt (2012.24.10)
1967,



Undershirt (2012.24.9)
1967,



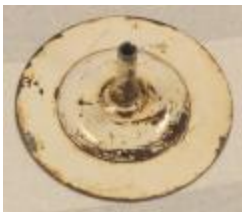
Vest (2012.24.7)
1967,



Vest (2012.24.8)
1967,



Vest (F2016.84)



Wheel (2007.3.9.A)
Angelo's Bakery



Wheel (2007.3.9.B)
Angelo's Bakery



Whisk (2007.3.28)
Angelo's Bakery