



**Photograph (1993.11.4)**  
September 21 – December 20, 1917  
Florence's Collection



**Embroidery (1993.16.4)**  
1912,



**Slipper (1993.24.3A)**  
circa 1910,



**Slipper (1993.24.3B)**  
circa 1910,



**Photograph (1993.34.2)**  
1917,



**Photograph (1993.36.1)**  
1912 – 1913



**Photograph (1993.37.6)**  
1912



**Certificate (1993.42.10A)**  
August 17, 1917



**Orders, Military (1993.42.11A)**  
August 2, 1917,



**Contract (1993.42.12A)**  
December 21, 1918



**Postcard (1993.42.15)**  
December 26, 1917,



**Postcard (1993.42.16)**  
February 22, 1918,



**Registration (1993.42.19)**  
June 5, 1917



**Pitcher (1993.52.6)**  
circa 1915



**Photograph (1993.65.3A)**  
1916



**Photograph (1993.65.3B)**  
1916



Photograph (1993.65.3C)  
1916



Photograph (1993.69.7)  
1917,



Photograph (1993.69.17)  
1910



Photograph (1993.69.18)  
1910



Photograph (1993.69.36)  
1916,



Photograph (1993.69.51)  
1911



Photograph (1993.69.52)  
1910



Certificate, Citizenship (1993.70.2)  
March 3, 1917



**Discharge, Military (1993.70.3)**  
June 28, 1919



**Collar (1994.32.2A)**  
1915 – 1925, 1915 – 1925



**Collar (1994.32.2B)**  
1915 – 1925, 1915 – 1925



**Collar (1994.32.2C)**  
1915 – 1925, 1915 – 1925



**Collar (1994.32.2D)**  
1915 – 1925, 1915 – 1925



**Collar (1994.32.2E)**  
1915 – 1925, 1915 – 1925



**Collar (1994.32.2F)**  
1915 – 1925, 1915 – 1925



**Collar (1994.32.2G)**  
1915 – 1925, 1915 – 1925



**Collar (1994.32.2H)**  
1915 – 1925, 1915 – 1925



**Collar (1994.32.2I)**  
1915 – 1925, 1915 – 1925



**Nightgown (1994.41.10.A)**  
1910, 1910



**Pantaloons (1994.41.10.B)**  
1910,



**Pillowcase (1994.41.10.C)**  
February 15, 2013, 1910  
Marina Textile Collection



**Doily (1994.41.10.E)**  
1905 – 1915, 1905 – 1915



**Doily (1994.41.10.F)**  
1905 – 1915



**Petticoat (1994.41.12.A)**  
February 18, 2013, 1880 – 1930  
Marina Textile Collection



**Icon (1994.41.15)**  
February 25, 2013, 1860 – 1930  
Marina's Collection



**Purse, Change (1994.41.16.A)**  
1900 – 1930



**Purse, Change (1994.41.16.B)**  
1900 – 1930



**Coin (1994.41.16.K)**  
1912,



**Pendant (1994.41.19)**  
1915,



**Chain, Key (1994.41.20)**  
1916,



**Photograph (1994.47.1)**  
circa 1918



**Vest (1994.51.A)**  
1890 – 1920  
Bisioulis Collection



**Cumberband (1994.51.B)**  
1890 – 1920  
Bisioulis Collection



**Cumberband (1994.51.C)**  
February 22, 2013, 1890 – 1920  
Bisioulis Collection



**Cumberband (1994.51.D)**  
February 22, 2013, 1890 – 1920  
Bisioulis Collection



Gown, Wedding (1994.62)  
October 18, 1917,



Photograph (1994.65.1A)  
1911,



Photograph (1994.65.1C)  
1911,



Photograph (1994.65.1F)  
1919,



Photograph (1994.65.1M)  
1919,



Photograph (1994.65.1T)  
1917,



Photograph (1994.65.1W)  
1911,



Photograph (1994.65.4)  
1919,



Photograph (1994.119.2)  
1915,



Nightgown (1995.45.1)  
February 22, 2013, 1910  
Estelle Collection



Cape (1995.45.2)  
1910 – 1930  
Estelle Collection



Petticoat (1996.1.1)  
1910,



Pantalettes (1996.1.2)  
1910,





Photograph (1996.78.2)  
1917 – 1918,



Gown, Wedding (1996.80)  
1914, 1914



Shawl (1996.86.2.B)  
1919, 1919



Ribbon (1996.91.1.A)  
1918, 1918



Ribbon (1996.91.1.B)  
1918, 1918



Bedspread (1996.95.1)  
circa 1916,



Medal, Commemorative (1996.98.2)  
1940, 1916 – 1940  
Dr. Anthony and Maria Zannis Collection



Medal, Commemorative (1996.98.3)  
1912 – 1913  
Dr. Anthony and Maria Zannis Collection



**Medal, Commemorative (1996.98.4)**  
1913,  
Dr. Anthony and Maria Zannis Collection



**Picture, Needlework (1996.105.1)**  
1917,



**Picture, Needlework (1996.105.2)**  
1917,



**Flute (1997.43.1.A)**  
circa 1910,



**Case for Flute (1997.43.1.B)**  
circa 1910,



**Helmet (1998.17.1)**  
1918 – 1919



**Hat (1998.17.4.A)**  
1918 – 1919



**Jacket (1998.22.1.A)**  
circa 1918,  
Defenders of Democracy



**Pants (1998.22.1.B)**  
circa 1918,  
Defenders of Democracy

---



**Legging (1998.22.1.C)**  
circa 1918,  
Defenders of Democracy

---



**Legging (1998.22.1.D)**  
circa 1918,  
Defenders of Democracy

---



**Stocking (1998.22.1.E)**  
1918, 1918  
Defenders of Democracy

---



**Stocking (1998.22.1.F)**  
1918,  
Defenders of Democracy

---



**Cap (1998.22.1.G)**  
1918, 1918  
Defenders of Democracy

---



**Photograph (1998.22.2)**  
1917 – 1918  
George Phillos Photograph Collection

---



**Photograph (1998.22.3)**  
1917 – 1918  
George Phillos Photograph Collection

---



**Photograph (1998.22.4)**  
1917 – 1918  
George Phillos Photograph Collection

---



Photograph (1998.33.1)  
1917 – 1920  
Tess's Collection



Photograph (1998.46.1)  
1919  
Katherine's Collection



Photograph (1998.46.2)  
1919,



Pillowcase (1999.1.1.A)  
1919, 1919



Pillowcase (1999.1.1.B)  
1919, 1919



Photograph (1999.6.3)  
1916,



Photograph (1999.10.1)  
1912,



Photograph (1999.10.27)  
1911,



Photograph (1999.10.46)  
1912,



Photograph (1999.10.47)  
1912,



Photograph (1999.15.2)  
1913,



Photograph (2000.2.1)  
1915,



Nightgown (2000.3.17)  
February 22, 2013, 1900 – 1930  
Mae C Collection



Photograph (2000.10.3)  
circa 1910,



Certificate, Discharge (2000.13.1)  
June 5, 1919,



Photograph (2001.32.1)  
1913



Scale (2001.38.7)  
1890 – 1910, 1890 – 1910



Photograph (2001.43.1)  
circa 1914,



Jacket (2002.8.1)  
1917,  
IN MEMORY OF HELEN SPIROKARAGAS & CHRISTINE SPIRO



Dicky (2002.8.2)  
circa 1917,  
IN MEMORY OF HELEN SPIROKARAGAS & CHRISTINE SPIRO



Scarf (2002.8.3)  
1917,  
IN MEMORY OF HELEN SPIROKARAGAS & CHRISTINE SPIRO



Wristlet (2002.8.4.A)  
1917,  
IN MEMORY OF HELEN SPIROKARAGAS & CHRISTINE SPIRO



Wristlet (2002.8.4.B)  
1917,  
IN MEMORY OF HELEN SPIROKARAGAS & CHRISTINE SPIRO



**Gown, Wedding (2002.52.11.A)**  
1912, 1912



**Veil (2002.52.11.B)**  
1912, 1912



**Shoe (2002.52.11.C.1)**  
1912, 1912



**Shoe (2002.52.11.C.2)**  
1912, 1912



**Candle (2002.52.13)**  
1912, 1912



**Boutonniere (2002.52.15.A)**  
1912, 1912



**Boutonniere (2002.52.15.B)**  
1912, 1912



Photograph (2002.53.1)  
1912,



Photograph (2002.53.4)  
September 15, 1915,



Photograph (2002.65.2)  
1918  
Arthur's Collection



Postcard (2003.26.1)  
1910s, 1910s  
George Phillos Photograph Collection



Postcard (2003.26.2)  
circa 1915,  
George Phillos Photograph Collection



Postcard (2003.26.3)  
1918,  
George Phillos Photograph Collection



Postcard (2003.26.4.a)  
1918,  
George Phillos Photograph Collection





**Postcard (2003.26.4b)**  
1918,  
Phillos Confectionary Store, Princess Confectionary Store, George Phillos  
Photograph Collection



**Postcard (2003.26.5)**  
1918,  
George Phillos Photograph Collection



**Ad, Magazine (2003.26.10)**  
July 1918  
George Phillos Photograph Collection



**Postcard (2003.26.38)**  
1916,  
George Phillos Photograph Collection



**Postcard (2003.26.56)**  
1910s  
George Phillos Photograph Collection



**Postcard (2003.26.62)**  
1910s  
George Phillos Photograph Collection



**Postcard (2003.26.67)**  
1910s, 1910s  
George Phillos Photograph Collection



**Postcard (2003.26.75)**  
1910s, 1910s  
George Phillos Photograph Collection



**Postcard (2003.26.76)**  
1910s, 1910s  
George Phillos Photograph Collection



**Postcard (2003.26.77)**  
1910s, 1910s  
George Phillos Photograph Collection

---



**Postcard (2003.26.78)**  
1910s, 1910s  
George Phillos Photograph Collection

---



**Postcard (2003.26.79)**  
1910s, 1910s  
George Phillos Photograph Collection

---



**Postcard (2003.26.81)**  
1910s, 1910s  
George Phillos Photograph Collection

---



**Postcard (2003.26.82)**  
1910s, 1910s  
George Phillos Photograph Collection

---



**Postcard (2003.26.83)**  
circa 1910 – 1939, 1910 – 1939  
George Phillos Photograph Collection

---



**Postcard (2003.26.84)**  
1910s, 1910s  
George Phillos Photograph Collection

---



**Postcard (2003.26.114)**  
1910s  
George Phillos Photograph Collection

---



**Photograph (2003.26.115)**  
1910s, 1910s  
George Phillos Photograph Collection

---



**Postcard (2003.26.126)**  
1910s, 1910s  
George Phillos Photograph Collection



Postcard, Picture (2003.26.163)  
1910s  
George Phillos Photograph Collection



Photograph (2003.28.9)  
1914 – 1918  
Spanos Family Papers



Wall Hanging (2003.33.1.A)  
1910 – 1918,  
BARBATSULY



Wall Hanging (2003.33.1.B)  
1910 – 1918,  
BARBATSULY



Wall Hanging (2003.33.2)  
1914,  
BARBATSULY



Picture, Needlework (2003.33.7.A)  
1910,  
BARBATSULY



Picture, Needlework (2003.33.7.B)  
1910,  
BARBATSULY



Photograph (2003.33.13.B)  
circa 1910,



Sock (2003.33.19.A)  
before 1918,  
BARBATSULY



Sock (2003.33.19.B)  
before 1918,  
BARBATSULY



Sock (2003.33.20.A)  
before 1918,  
BARBATSULY



Sock (2003.33.20.B)  
before 1918,  
BARBATSULY



Sock (2003.33.21.A)  
1918,  
BARBATSULY



Sock (2003.33.21.B)  
1918,  
BARBATSULY



Bag, Pajama (2003.33.23)  
1910s,



Shirt (2003.33.25.A)  
1910,  
BARBATSULY



**Pants (2003.33.25.B)**  
1910,  
BARBATSULY

---



**Sock (2003.33.29)**  
before 1918,  
BARBATSULY

---



**Card, Souvenir (2003.36.55.13)**  
1913,

---



**Plate, Decorative (2003.37.11)**  
1900 – 2003  
JANE SARLAS FONTANA

---



**Photograph (2003.40.3)**  
February 1919,

---



**Letter (2004.1.5)**  
1919,

---



**Dress (2004.8.24)**  
1915 – 1920

---



**Photograph (2004.15.1)**  
1914 – 1918

---



**Picture (2004.18.1)**  
December 8, 1918,



**Gown, Wedding (2004.18.3.A)**  
1918,



**Glove (2004.18.5.A)**  
1918,



**Glove (2004.18.5.B)**  
1918,



**Cap (2004.18.6)**  
1918,



**Boutonniere (2004.18.7.A)**  
1918,



**Boutonniere (2004.18.7.B)**  
1918,



Tiara (2004.18.8.1)  
1918,



Stefana (2004.18.8.2.A)  
1918,



Stefana (2004.18.8.2.B)  
1918,



Picture, Needlework (2004.19.1)  
1910 – 1912



Letter (2004.23.1)  
May 4, 1919,



Blanket (2005.2.2.a)  
circa 1897, 1883 – 1930  
Judith's Collection



Blanket (2005.2.2.b)  
1897, 1883 – 1930  
Judith's Collection



Photograph (2005.6.2)  
circa 1918,



**Certificate, Discharge (2005.6.5)**  
March 13, 1919,



**Certificate, Citizenship (2005.6.8)**  
July 15, 1918,



**Ricer (2005.30.10)**  
February 11, 2013, 1900 – 1960  
BARBATSULY



**Photograph (2006.11.12)**  
1912 – 1913  
Andrew's Collection



**Photograph (2006.11.13)**  
1917,



**Photograph (2006.11.16)**  
1912 – 1913  
Andrew's Collection



**Photograph (2006.11.17)**  
1912 – 1913  
Andrew's Collection





**Sifter, Flour (2006.13.1)**  
1912,



**Grinder, Meat (2006.13.2)**  
1900 – 1912



**Card, Souvenir (2006.15.31)**  
May 12, 1914,



**Card, Souvenir (2006.15.36)**  
February 2, 1912,



**Organ (2006.16.1)**  
circa 1890 – 1915,



**Phonograph (2006.16.3)**  
circa 1905 – 1915,



**Photograph (2006.19.39)**  
June 28, 1918,



Picture (2006.19.78)  
May 15, 1911,



Cleaver (2006.21.2)  
February 27, 2013, 1882 – 1969



Photograph (2006.27.2)  
1918 – 1919  
Hrisoula's Collection



Photograph (2006.27.3)  
1912,



Certificate, Naturalization (2006.27.17)  
November 2, 1918,



Certificate, Registration (2006.27.19)  
June 5, 1917,



Thermometer (2006.40.2)  
1880 – 1930  
Eleni's Collection



Photograph (2007.8.1)  
1915,



Photograph (2007.16.11)  
1912

---



Photograph (2007.16.18)  
1912,

---



Photograph (2007.16.19)  
1917,

---



Photograph (2007.16.20)  
1918,

---



Photograph (2007.16.22)  
1916,

---



Photograph (2007.16.23)  
1913 – 1914

---



Photograph (2007.16.24)  
1919 – 1920

---



Photograph (2007.16.25)  
1912,  
Image o

---



Photograph (2007.16.29)  
1911,

---



Photograph (2007.16.32)  
1919,

---



Photograph (2007.16.33)  
1918,

---



Photograph (2007.16.34)  
1911,

---



Photograph (2007.16.37)  
1916,



Photograph (2007.16.38)  
1911,



Photograph (2007.16.45)  
1916,



Kandili (2007.27.1)  
1900 – 1950  
Angela's Collection



Machine, Sewing (2007.29.1)  
1917 – 1937  
ESTATE OF BERTHA KUNDANIS



Book, Instruction (2007.29.1a)  
March 11, 2013, 1915 – 1917  
ESTATE OF BERTHA KUNDANIS



Box, Needlework (2007.29.1b)  
March 11, 2013, 1917 – 1937  
ESTATE OF BERTHA KUNDANIS



Photograph (2007.39.1)  
1914 – 1918



Photograph (2007.39.3)  
1918,



Photograph (2007.39.5)  
1916,



Lamp, Oil (2007.45.1)  
1875 – 1940  
Angelike's Collection



Bell (2007.45.2)  
1875 – 1940  
Angelike's Collection



Register, Cash (2007.53.1)  
1916,



Bag, Tagari (2008.6.6)  
March 13, 2013, 1900 – 1921  
Collection of Vasilios and Alexandra (Muyias) Dervisis



Bag, Tagari (2008.6.7)  
1900 – 1921  
Collection of Vasilios and Alexandra (Muyias) Dervisis



**Photograph (2008.17.15)**  
1910 – 1915



**Photograph (2008.17.16)**  
1910 – 1915



**Photograph (2008.17.17)**  
1900 – 1910  
Crystella and Tess's Collection



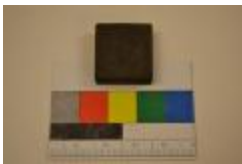
**Icon (2008.26.1)**  
1919,



**Lamp, Oil (2008.34.4)**  
1900 – 1940  
Karahalios's Collection



**Block, Printing (2008.37.21)**  
1863 – 1973  
Greek Art Printing Company Artifact Collection



**Block, Printing (2008.37.27)**  
1917,  
Greek Art Printing Company Artifact Collection



**Block, Printing (2008.37.53)**  
20th century  
Greek Art Printing Company Artifact Collection



**Block, Printing (2008.37.73)**  
1914,  
Greek Art Printing Company Artifact Collection

---



**Blanket (2009.4.2)**  
1904 – 1926

---



**Blanket (2009.4.3)**  
1904 – 1926

---



**Photograph (2010.1.1)**  
October 29, 1916,

---



**Knocker, Door (2010.10.2.A)**  
1890 – 1930  
Catherine's Collection

---



**Photograph (2010.13.3)**  
1917

---



**Block, Printing (2010.26.8)**  
1904 – 1967

---



**Block, Printing (2010.26.9)**  
1904 – 1967

---





**Block, Printing (2010.26.10)**  
1952, 1904 – 1967



**Block, Printing (2010.26.14)**  
1904 – 1967



**Photograph (2011.3.1)**  
July 4, 1918,



**Photograph (2011.3.2)**  
July 4, 1918



**Photograph (2011.3.3)**  
July 4, 1918,



**Photograph (2011.5.1)**  
1890 – 1910



**Mandolin (2011.7.1)**  
1890 – 1927,  
Alex's Candy Shop



**Card, Index (2011.7.8)**  
1900 – 1920,  
Alex's Candy Shop



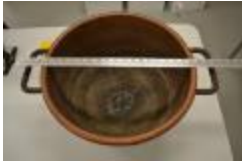
**Paper, Photographic (2011.7.14)**  
1900 – 1920,  
Alex's Candy Shop

---



**Paper, Photographic (2011.7.15)**  
1900 – 1920,  
Alex's Candy Shop

---



**Pot, Chocolate (2011.7.31)**  
1890 – 1930,  
Alex's Candy Shop

---



**Box, Candy (2011.7.41)**  
1910 – 1940  
Alex's Candy Shop

---



**Box, Candy (2011.7.42)**  
1910 – 1940,  
Alex's Candy Shop

---



**Frame, Picture (2012.8.1)**  
February 27, 2012, 1904 – 1967

---



**Photograph (2012.9.2)**  
1913 – 1929  
Spiros Sافرithis Collection

---



**Photograph (2012.9.3)**  
1913 – 1929  
Spiros Sافرithis Collection

---



**Box (2012.12.1)**  
February 27, 2012, 1904 – 1967  
Ting-a-Ling Candies

---



**Rubber Stamp (2012.12.2)**  
February 27, 2012, 1904 – 1967

---



**Rubber Stamp (2012.12.3)**  
February 27, 2012, 1904 – 1967

---



**Rubber Stamp (2012.12.4)**  
February 27, 2012, 1904 – 1967

---



**Rubber Stamp (2012.12.5)**  
February 27, 2012, 1904 – 1967

---



**Rubber Stamp (2012.12.6)**  
February 27, 2012, 1904 – 1967

---



**Rubber Stamp (2012.12.7)**  
February 27, 2012, 1904 – 1967

---



**Rubber Stamp (2012.12.8)**  
February 27, 2012, 1904 – 1967

---



**Rubber Stamp (2012.12.9)**  
February 27, 2012, 1904 – 1967

---



**Rubber Stamp (2012.12.10)**  
February 27, 2012, 1904 – 1967

---



**Rubber Stamp (2012.12.11)**  
February 27, 2012, 1904 – 1967

---



**Block, Printing (2012.12.12)**  
February 27, 2012, 1904 – 1967

---



**Thimble (2012.13.1)**  
1904 – 1967

---



**Thimble (2012.13.2)**  
1904 – 1967

---



**Thimble (2012.13.3)**  
1904 – 1967

---



**Picture, Needlework (2012.19.1)**  
1895 – 1910

---



**Photograph (2012.43.1)**  
circa 1917

---



**Ribbon, Fraternal (2012.49.1)**  
1915



**Collar (2013.1.68)**  
January 18, 2013, 1919 – 1926  
Celia's Textile Collection



**Sham, Pillow (2013.1.91)**  
January 23, 2013, 1919 – 1926  
Celia's Textile Collection



**Sham, Pillow (2013.1.92)**  
January 23, 2013, 1919 – 1926  
Celia's Textile Collection



**Sham, Pillow (2013.1.93)**  
January 23, 2013, 1919 – 1926  
Celia's Textile Collection



**Sham, Pillow (2013.1.94)**  
January 23, 2013, 1919 – 1926  
Celia's Textile Collection



**Cover, Bolster (2013.1.95)**  
January 23, 2013, 1919 – 1926  
Celia's Textile Collection



**Flag (2013.6.1)**  
April 2, 2013, 1919  
Galas Family Collection



**Certificate, Discharge (2013.6.7)**  
April 10, 2013, 1919  
Calas Family Collection

---



**Certificate, Discharge (2013.6.8)**  
April 12, 2013, 1919  
Calas Family Collection

---



**Napkin (2013.10.1)**  
1903 – 1985  
George's Collection

---



**Napkin (2013.10.2)**  
1903 – 1985  
George's Collection

---



**Napkin (2013.10.3)**  
1903 – 1985  
George's Collection

---



**Napkin (2013.10.4)**  
1903 – 1985  
George's Collection

---



**Napkin (2013.10.5)**  
1903 – 1985  
George's Collection

---



**Napkin (2013.10.6)**  
1903 – 1985  
George's Collection

---



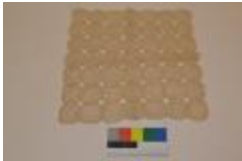
**Tablecloth (2013.10.7)**  
1903 – 1985  
George's Collection

---



**Doily (2013.10.8)**  
1903 – 1985  
George's Collection

---



**Doily (2013.10.9)**  
1903 – 1985  
George's Collection

---



**Photograph (2013.11.1)**  
July 14, 1915, 1915  
Helen's Collection

---



**Album (2013.24.4)**  
1906 – 1929

---



**Postcard (2013.27.1)**  
1918,

---



**Photograph (2014.1.1)**  
circa 1912,

---



**Certificate, Registration (2014.1.6)**  
1918,

---



**Coin (2014.1.44)**  
1910,

---



**Coin (2014.1.45)**  
1910,



**Coin (2014.1.46)**  
1911,



**Coin (2014.1.49)**  
1913,



**Photograph (2014.2.1)**  
February 28, 1916,



**Blanket (2015.1.1)**  
1912,



**Jacket (2015.6.4.A)**  
circa 1915,



**Skirt (2015.6.4.B)**  
1915,



**Uniform (2015.11.1)**  
circa 1918,





Photograph (2015.11.2)  
circa 1918,



Photograph (2015.22.1)  
1890 – 1913



Photograph (2015.22.2)  
1890 – 1913



Photograph (2015.22.3)  
1890 – 1920



Photograph (2015.22.4)  
1910 – 1913



Photograph (2015.22.5)  
1910 – 1913



Photograph (2015.22.6)  
1910 – 1913



Photograph (2015.22.7)  
1910 – 1913



Photograph (2015.22.8)  
1910 – 1913



Photograph (2015.22.9)  
1910 – 1913



Blanket (2016.1.1)  
1911 – 1954



Rug (2018.2.1)  
circa 1900 – 1929, 1900 – 1929



Mask, Gas (2019.12.7A)  
1910s



Valve (2019.12.7B)  
1910s



Guard, Eye (2019.12.7C)  
1910s



Plug, Nose (2019.12.7D)  
1910s



**Flabellum (F2012.11)**  
1900 – 2012



**Flabellum (F2012.12)**  
1900 – 2012



**Mortar & Pestle (F2013.9)**  
1860 – 1930



**Pipe (F2013.10)**  
1900 – 1940



**Photograph (F2013.56)**  
1915,



**Pot, Paste (F2014.4)**  
1890 – 1960



**Pot, Paste (F2014.5)**  
1890 – 1960



Photograph (F2014.28)  
1860 – 1970



Photograph (F2014.29)  
1860 – 1970



Photograph (F2014.30)  
1860 – 1970



Currency (F2014.78)  
1917,



Camera, Folding (F2014.110)  
circa 1916,



Picture (F2015.43)  
1916,



Certificate, Achievement (F2015.53)  
1919,