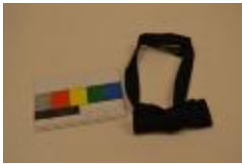




Stefana (1993.62.1)
1932, 1932



Gown, Wedding (1994.62)
October 18, 1917,



Tie, Bow (1994.107.3)



Necktie (1994.107.5)



Hanging (1996.13.4)
1890, 1890



Pants (1996.94.1.B)



Vest (1996.94.1.C)



Candle (1996.97.9.A)
1923, 1923



Candle (1996.97.9.B)
1923, 1923



Stefana (1999.5.1)



Candle (1999.5.2.a)



Candle (1999.5.2.b)



Banner (2001.39.1)



Cape (2001.45.2)
1952,



Skirt (2001.53.1.B)



Sash (2001.53.1.C)



Beret (2001.53.1.D)



Embroidery (2002.5.1)



Belt (2002.45.3)



Arm Cuff (2002.45.4.A)



Arm Cuff (2002.45.4.B)



Sash (2002.45.5)



Chasuble (2002.45.6)



Stefanothiki (2002.52.9)
1936, 1936



Pillow, Wedding (2002.52.10)
1936, 1936



Tablecloth (2003.1.5)



Stefana (2003.23.1)
December 16, 1945,



Skirt (2003.34.13.C)



Candle (2003.58.7.A)
November 10, 1935,
Pagedas Family Collection



Candle (2003.58.7.B)
November 10, 1935,
Pagedas Family Collection



Purse (2005.8.30)



Sash (2006.7.1)
1939,



Comforter (2006.13.7)



Slipper, Ballet (2007.52.1)
1970 – 2002



Dress (2011.6.22.B)



Shawl (2011.6.22.E)



Skirt (2012.24.2)
circa 1967,



Pocket (F2014.159)