



Postcard (1993.41.3)



Certificate (1993.42.10A)
August 17, 1917



Orders, Military (1993.42.11A)
August 2, 1917,



Contract (1993.42.12A)
December 21, 1918



Envelope (1993.42.13B)



Postcard (1993.42.15)
December 26, 1917,



Postcard (1993.42.16)
February 22, 1918,



Postcard (1993.42.17)



Card, Membership (1993.42.18.1)
1925,



Card, Membership (1993.42.18.10)
1930,



Card, Membership (1993.42.18.11)
1931,



Card, Membership (1993.42.18.12)
1933,



Card, Membership (1993.42.18.13)
1934,



Card, Membership (1993.42.18.14)
1935,



Card, Membership (1993.42.18.16)
1937,



Card, Membership (1993.42.18.17)
1938,



Card, Membership (1993.42.18.18)
1940,



Card, Membership (1993.42.18.19)
1941,



Card, Membership (1993.42.18.2)
1921,



Card, Membership (1993.42.18.20)
1942,



Card, Membership (1993.42.18.21)
1943,



Card, Membership (1993.42.18.22)
1946,



Card, Membership (1993.42.18.23)
1947,



Card, Membership (1993.42.18.24)
1948,



Card, Membership (1993.42.18.25)
1949,



Card, Membership (1993.42.18.26)
1950,



Card, Membership (1993.42.18.27)
1951,



Card, Membership (1993.42.18.28)
1952,



Card, Membership (1993.42.18.29)
1953,



Card, Membership (1993.42.18.30)
1954,



Card, Membership (1993.42.18.31)
1955,



Card, Membership (1993.42.18.32)
1956,



Card, Membership (1993.42.18.33)
1957,



Card, Membership (1993.42.18.34)
1958,



Card, Membership (1993.42.18.35)
1959,



Card, Membership (1993.42.18.36)
1961,



Card, Membership (1993.42.18.37)
1962,



Card, Membership (1993.42.18.38)
1963,



Card, Membership (1993.42.18.39)
1964,



Card, Membership (1993.42.18.4)
1922,



Card, Membership (1993.42.18.40)
1965,



Card, Membership (1993.42.18.41)
1966,



Card, Membership (1993.42.18.42)
1967,



Card, Membership (1993.42.18.5)
1923,



Card, Membership (1993.42.18.6)
1924;



Card, Membership (1993.42.18.7)
1929;



Card, Membership (1993.42.18.7.1)
1927;



Card, Membership (1993.42.18.8)
1928;



Card, Membership (1993.42.18.9)
1929;



Card, Membership (1993.42.21.1)
August 19, 1936;



Card, Membership (1993.42.21.2)
1940;



Card, Membership (1993.42.21.3)
1943;



Card, Membership (1993.42.21.4)
1948;



Certificate, Birth (1993.42.3)
January 10, 1891,



Return, Tax (1993.42.5)
1920,



Icon (1993.63.2)



Icon (1993.68.3)



Slipper (1993.7.1)



Certificate, Citizenship (1993.70.2)
March 3, 1917



Discharge, Military (1993.70.3)
June 28, 1919



Correspondence (1993.70.4)
November 12, 1939



Correspondence (1993.70.5)
November 2, 1939,



Correspondence (1993.70.6)
October 25, 1940,



Certificate, Birth (1993.70.7)
June 16, 1957



Correspondence (1993.70.8)
February 7, 1933



Correspondence (1993.70.9)
November 18, 1939



Certificate, Award (1994.106.1)
November 19, 1969,



Certificate, Award (1994.112.4)
October 12, 1991



Certificate, Award (1994.112.5)
1989 – 1993



Certificate, Award (1994.112.6)
June 6, 1992



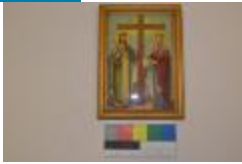
Certificate (1994.112.7)



Photograph (1994.112.8)



Frame, Picture (1994.12.1)
March 1, 2013,
Mrs. Pangere's Collection



Icon (1994.12.4)
,
Mrs. Pangere's Collection



Icon (1994.12.5)
,
Mrs. Pangere's Collection



Icon (1994.12.7)
March 1, 2013,
Mrs. Pangere's Collection



Box Candy (1994.127.1)
SUGAR BOWL SWEET SHOP



Box Candy (1994.127.3)
1921 - 1997
SUGAR BOWL SWEET SHOP



Certificate Membership (1994.26.1)
August 4, 1931,
Gene Douglas Collection



Certificate Birth (1994.33.7.a)
March 3, 1969,



Card, Identification (1994.33.7.c)
1974,



Certificate, Naturalization (1994.41.13)
1930s



Print (1994.79.A)



Print (1994.79.B)



Painting (1994.79.C)
1958,



Print (1994.79.D)
1941,



Print (1994.79.E)
1941,



Print (1994.79.F)
1941,



Certificate (1995.19.7.1)
1940s,



Document (1995.19.7.2)
1940s,



Document (1995.19.7.3)
1940s,



Certificate, Commemorative (1995.19.8.1)
1940,



Certificate, Commemorative (1995.19.8.2)
1940,



Certificate, Commemorative (1995.19.8.3)



Certificate, Commemorative (1995.19.8.4)



Certificate, Commemorative (1995.19.8.5)



Certificate, Achievement (1995.19.8.6)



Certificate, Achievement (1995.19.8.7)
September 18, 1958,



Certificate, Commemorative (1995.19.8.8)
September 28, 1960,



Certificate, Membership (1995.19.9.1)
August 15, 1955,



Certificate, Membership (1995.19.9.2)
1967,



Certificate, Membership (1995.19.9.3)
1972,



Box, Candy (1995.49.8.A)
1990s,
Gayety's Chocolates



Box, Candy (1995.49.8.B)
1990s,
Gayety's Chocolates



Box, Candy (1995.49.8.C)
circa 1990,
Gayety's Chocolates



Box, Candy (1995.49.8.D)
1990s,
Gayety's Chocolates



Box, Candy (1995.49.8.E)
circa 1990,
Gayety's Chocolates



Certificate, Stock (1996.104.1)
February 11, 1924,



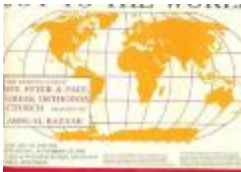
License, Marriage (1996.42.2.B)



Certificate, Naturalization (1996.42.4)
October 2, 1940



Certificate, Naturalization (1996.42.5)
March 19, 1925



Poster (1996.43.11)
1990,



Poster (1996.43.8)
1982,



Newspaper Clipping (1996.50.6)
February 1, 1932,



Certificate, Membership (1996.54.1)
July 1, 1928



Certificate, Marriage (1996.56.2)
October 19, 1924,



Certificate, Birth (1996.56.3)



Certificate, Citizenship (1996.56.4)
January 6, 1938,



Receipt (1996.56.5)
1940,



Box, Candy (1996.64.11.A)
CUPID CANDIES



Wrapping Paper Roll Cutter (1996.64.12)
1962 - 1996
CUPID CANDIES



Ad, Newspaper (1996.64.15.A)
April 12, 2013; 1936 - 2013
CUPID CANDIES



Bag (1996.64.15.C)
CUPID CANDIES



Icon (1996.65.1)
February 25, 2013, 1962
Mary Fotopoulos Collection



Bond (1996.73.1)
1922,



Bond (1996.73.2)
1926,



Certificate, Marriage (1996.93.5)
1924,



Certificate, Marriage (1996.93.6)



Invitation (1996.93.7)
1924,



Box Candy (1996.96.2.B)
DOVE CANDY



Letter (1997.32.1)
1967-1988,



Letter (1997.32.10)
1967-1988,



Letter (1997.32.11)
1967-1988,



Letter (1997.32.12)
1967 – 1988,



Letter (1997.32.13)
1967 – 1988,



Letter (1997.32.14)
1967 – 1988,



Letter (1997.32.15)
1967 – 1988,



Letter (1997.32.16)
1967 – 1988,



Letter (1997.32.17)
1967 – 1988,



Letter (1997.32.18)
1967 – 1988,



Letter (1997.32.19)
1967 – 1988,



Letter (1997.32.2)
1967 – 1988,



Letter (1997.32.20)
1967 – 1988,



Letter (1997.32.21)
1967 – 1988,



Letter (1997.32.22)
1967 – 1988,



Letter (1997.32.23)
1967 – 1988,



Letter (1997.32.24)
1967 – 1988,



Letter (1997.32.25)
1967 – 1988,



Letter (1997.32.26)
1967 – 1988,



Letter (1997.32.27)
1967 – 1988,



Letter (1997.32.28)
1967 – 1988,



Letter (1997.32.29)
1967 – 1988,



Letter (1997.32.3)
1967-1988,



Letter (1997.32.30)
1967-1988,



Letter (1997.32.31)
1967-1988,



Letter (1997.32.32)
1967-1988,



Letter (1997.32.33)
1967-1988,



Letter (1997.32.34)
1967-1988,



Letter (1997.32.35)
1967-1988,



Letter (1997.32.36)
1967 - 1988,



Letter (1997.32.37)
1967 - 1988,



Letter (1997.32.4)
1967 - 1988,



Letter (1997.32.5)
1967 - 1988,



Letter (1997.32.6)
1967 - 1988,



Letter (1997.32.7)
1967 - 1988,



Letter (1997.32.8)
1967 - 1988,



Letter (1997.32.9)
1967–1988,



Diary (1998.42.17.1-4)
December 7, 1941,



Card, Business (1998.54.6)



Stamp (1998.54.7)



Picture (1998.56.9)
1962,



Button, Political (1998.7.3)



Matchbox (1998.7.4)
1967–1974



Card, Greeting (1998.7.5.1)



Card, Greeting (1998.7.5.2)



Certificate, Commemorative (1999.11.12)
November 30, 1969,
Arthur Peponis Collection



Program (1999.11.15.A)
1963,
Arthur Peponis Collection



Program (1999.11.15.B)
1963,
Arthur Peponis Collection



Program (1999.11.16)
November 5, 1961,
Arthur Peponis Collection



Program (1999.11.17)
1961,
Arthur Peponis Collection



Program (1999.11.18)
1991,
Arthur Peponis



Testimonial (1999.11.7)
July 20, 1974,
Arthur Peponis Collection



Booklet, Instruction (1999.15.3)



Booklet (1999.15.4)



Box, Shadow (1999.5.3)



Certificate, Birth (2000.10.4.b)



Certificate, Birth (2000.10.4.c)
July 16, 1947,



Certificate, Birth (2000.10.5.b)



Certificate, Discharge (2000.13.1)
June 5, 1919,



Telegram (2000.4.13)
1943
The George J. Hontos Collection



Postcard (2000.4.14)
January 15, 1942,
The George J. Hontos Collection



Certificate, Birth (2000.4.15)
May 27, 1920,
The George J. Hontos Collection



Correspondence (2000.4.16)
April 26, 1944,
The George J. Hontos Collection



Certificate (2000.4.17)
The George J. Hontos Collection



Correspondence (2000.4.18)
December 2, 1946,
The George J. Hontos Collection



Correspondence (2000.4.20)
July 9, 1943,
The George J. Hontos Collection



Correspondence (2000.4.21)
July 8, 1943,
The George J. Hontos Collection



Correspondence (2000.4.23)
May 4, 1944,
The George J. Hontos Collection



Newspaper Clipping (2000.4.24)
May 13, 1944,
The George J. Hontos Collection



Newspaper (2000.4.25)
1940s,
The George J. Hontos Collection



Newspaper (2000.4.26)
June 15, 1944,
The George J. Hontos Collection



Newspaper (2000.4.27)
1943,
The George J. Hontos Collection



Newspaper (2000.4.28.A)
May 14, 1944,
The George J. Hontos Collection



Newspaper (2000.4.28.B)
May 14, 1944,
The George J. Hontos Collection



Newspaper (2000.4.29)
May 15, 1944,
The George J. Hontos Collection



Newspaper (2000.4.30)
May 7, 1944,
The George J. Hontos Collection



Book (2000.4.31)
April 17, 1948,
The George J. Hontos Collection



Certificate, Commemorative (2000.4.32)
July 2, 1943,
The George J. Hontos Collection



Letter (2000.4.33)
The George J. Hontos Collection



Letter (2000.4.34)
The George J. Hontos Collection



Letter (2000.4.35.A)
April 26, 1944,
The George J. Hontos Collection



Letter (2000.4.35.B)
April 26, 1944,
The George J. Hontos Collection



Letter (2000.4.36)
December 25, 1947,
The George J. Hontos Collection



Correspondence (2000.4.37)
August 17, 1943,
The George J. Hontos Collection



Letter (2000.4.38)
January 31, 1942,
The George J. Hontos Collection



Correspondence (2000.4.39)
February 9, 1944,
The George J. Hontos Collection



Newspaper (2000.4.41)
May 11, 1944,
The George J. Hontos Collection



Newspaper (2000.4.42)
May 11, 1944,
The George J. Hontos Collection



Correspondence (2000.4.45)
November 17, 1943,
The George J. Hontos Collection



Map (2001.10.7)
circa 1935,



Print (2001.14.1)
May 29 – June 1, 1987,



Book (2001.34.2)
1987,



Roll, Player Piano (2001.34.6)



Passport (2001.38.50)
August 25, 1923,



Card, Prayer (2001.38.51)
1984,
BARBATSULY



Certificate, Birth (2001.38.54)
January 23, 1927, 1927
The Barbatsuly Collection



Card, Mourning (2001.38.55)
August 22, 1984, 1984
Peter's Collection



Print (2002.24.1)
2002,



Pin (2002.27.1.A)
1968
George's Collection



Pin (2002.27.1.B)
1968
George's Collection



Pin, Campaign (2002.27.2.A)
1968
George's Collection



Pin, Campaign (2002.27.2.B)
1968
George's Collection



Postcard (2002.51.12.1)



Postcard (2002.51.12.2)
circa 1800,



Postcard (2002.51.12.3)



Slide (2002.51.25.1)
1960s,



Slide (2002.51.25.2)
1960s,



Slide (2002.51.25.3)
1960s,



Slide (2002.51.25.4)
1960s,



Slide (2002.51.25.5)
1960s,



Slide (2002.51.25.6)
1960s,



Envelope (2002.51.30)
1940 - 1944



Book (2002.51.31)
1936,



Newsletter (2002.51.32)
January 23, 1971,



Booklet (2002.51.33)
1953,



Program (2002.51.34)
November 16, 1967,



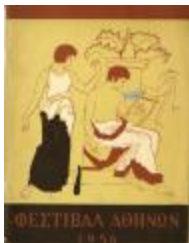
Program (2002.51.35)
October 11-13, 1996,



Program (2002.51.37)
October 7, 1992,



Program (2002.51.38)
October 20, 1963,



Program (2002.51.39)
1998,



Program (2002.51.40)
November 3, 1974,



Documents (2002.51.41)
1981,



Book, Instruction (2002.51.67)



Book, Instruction (2002.51.68)



Book, Instruction (2002.51.69)



Record, Phonograph (2002.51.70)



Record, Phonograph (2002.51.71)



Record, Phonograph (2002.51.72)



Record, Phonograph (2002.51.73)



Record, Phonograph (2002.51.74)



Record, Phonograph (2002.51.75)



Record, Phonograph (2002.51.76)



Record, Phonograph (2002.51.77)



Record, Phonograph (2002.51.78)



Record, Phonograph (2002.51.79)



Record, Phonograph (2002.51.80)



Record, Phonograph (2002.51.81)



Record, Phonograph (2002.51.82)



Record, Phonograph (2002.51.83)



Booklet (2002.52.24)
1968, 1968



Poster (2002.52.30)
1951,



Postcard (2002.52.53)



Postcard (2002.52.54)



Postcard (2002.52.55)



Postcard (2002.52.56)



Postcard (2002.52.57)



Postcard (2002.52.58)



Postcard (2002.52.60)



Postcard (2002.52.61.1)



Postcard (2002.52.61.2)



Postcard (2002.52.61.4)



Ticket (2002.52.62.1)
1937,



Ticket (2002.52.62.2)
1937,



Ticket (2002.52.62.3)
1937,



Ticket (2002.52.62.4)
1937,



Program (2002.52.66)
1937,



Certificate (2002.62.6)
February 19, 2013,



Certificate (2002.62.7)
February 19, 2013, 1988



Photo Album (2002.62.8)
February 19, 2013, 1983–1984



Pedigree (2003.28.19)
1992,
Spanos Family Papers



Box, Tobacco (2003.3.1)



Card, Mourning (2003.35.8.1)
2002;



Card, Mourning (2003.35.8.2)
2002;



Card, Mourning (2003.35.8.3)



Paper, Letterhead (2003.35.9.A)



Paper, Letterhead (2003.35.9.B)



Paper, Letterhead (2003.35.9.C)



Card, Souvenir (2003.36.1.1)



Card, Souvenir (2003.36.1.2)



Card, Souvenir (2003.36.1.3)



Card, Souvenir (2003.36.1.4)



Card, Souvenir (2003.36.1.5)



Card, Souvenir (2003.36.43)
1937,



Certificate, Award (2003.36.46)
May 15, 1931,



Party Favors (2003.36.9.A)
1962-1970
Daisy's Collection



Party Favors (2003.36.9.B)
1962–1970
Daisy's Collection



Box, Candy (2003.4.1.B)
circa 1996,
MARGIES CANDIES



Certificate, Birth (2003.40.5)
August 7, 1944,



Letter (2003.40.6)
August 7, 1944,



Certificate, Birth (2003.40.7)
October 26, 1962,



Certificate, Baptismal (2003.40.8)
December 18, 1938,



Button, Political (2003.49.1)
1978



Box, Shadow (2003.58.6.3)
1988,
Pagedas Family Collection



Candle (2003.58.7.A)
November 10, 1935,
Pagedas Family Collection



Candle (2003.58.7.B)
November 10, 1935,
Pagedas Family Collection



Card, Identification (2004.1.1.2)
July 30, 1928,



Document (2004.1.4)
December 18, 1946,



Letter (2004.1.5)
1919,



Document (2004.1.6.2)
June 18, 1946,



Deed (2004.1.6.3)
May 30, 2005,



Certificate, Marriage (2004.18.2)
October 13, 1978,



Letter (2004.21.2)



Letter (2004.23.1)
May 4, 1919,



Print (2004.5.46)



Print (2004.5.47)



Print (2004.5.48)



Print (2004.5.49)



Print (2004.5.50)



Hanging (2005.26.2)
1928,



Drawing (2005.26.6)
1975,



Certificate, Birth (2005.6.10)
1892,



Passport (2005.6.6)
circa 1921,



Certificate, Citizenship (2005.6.8)
July 15, 1978,



Print (2005.7.1)
circa 2000 – 2002,



Print (2005.7.2)
2000,



Print (2005.7.3)
2000,



Print (2005.7.4)
circa 2000,



Certificate, Marriage (2006.11.3)
August 6, 1986,



Certificate, Naturalization (2006.11.4)
June 11, 1953,



Certificate, Naturalization (2006.11.5)
September 30, 1925,



Certificate, Birth (2006.11.6)
March 15, 2000,



Passport (2006.19.100)
June 28, 1951,



Certificate, Immigration (2006.19.101)
September 19, 1951,



Postcard (2006.19.53)
1961,



Pin, Fraternal (2006.19.94)



Icon (2006.19.96.A)



Icon (2006.19.96.B)



Icon (2006.19.96.C)





Icon (2006.31.4)



Assemblage (2006.32.1)



Icon (2006.32.2)



Certificate, Membership (2006.33.21)
July 15, 1945



Currency (2006.38.1)
1944,



Currency (2006.38.2)
1944,



Print (2007.20.1)



Drawing (2007.25.1)
1931,



Drawing (2007.25.2)
1930,



Drawing (2007.25.3)
1930



Drawing (2007.25.4)
1929,



Certificate, Registration (2007.28.1)



Certificate, Registration (2007.28.2)



Certificate, Registration (2007.28.3)



Certificate, Registration (2007.28.4)



Book, Instruction (2007.29.1a)
March 11, 2013, 1915 - 1917
ESTATE OF BERTHA KUNDANIS



Napkin (2007.3.46)
Angelo's Bakery



Icon (2007.30.2)



Icon (2007.30.3)



Receipt (2007.50.1)
January 28, 1915,



Recipe (2008.13.1A)
circa 1960,



Recipe (2008.13.1B)
circa 1960,



Map (2008.33.1)
1845,



Map (2008.33.2)
1660,



Map (2008.33.3)
1660,



Map (2008.33.4)
circa 1500,



Map (2008.33.5)
1573,



Map (2008.33.6)
1573,



Map (2008.33.7)
1635,



Map (2008.33.8)
1590,



Stamp, Postage (2008.37.223)
Greek Art Printing Company Artifact Collection



Certificate, Citizenship (2010.12.1)
September 9, 1929,



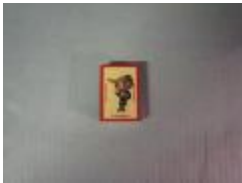
Certificate (2010.2.1)
February 4, 1954,



Certificate (2010.2.2)
February 26, 1935,



Certificate (2010.2.3)
October 17, 1935,



Matchbox (2011.1.11)
circa 2000, 1990 - 2010



Matchbox (2011.1.10)
circa 2000, 1990 - 2010



Matchbox (2011.1.11)
circa 2000, 1990 - 2010



Matchbox (2011.1.12)
circa 2000, 1990 - 2010



Matchbox (2011.1.2)
circa 2000, 1990 - 2010



Matchbox (2011.1.3)
circa 2000, 1990 - 2010



Matchbox (2011.1.4)
circa 2000, 1990 - 2010



Matchbox (2011.1.5)
circa 2000, 1990 - 2010



Matchbox (2011.1.6)
circa 2000, 1990 - 2010



Matchbox (2011.1.7)
circa 2000, 1990 - 2010



Matchbox (2011.1.8)
circa 2000, 1990 - 2010



Matchbox (2011.1.9)
circa 2000, 1990 - 2010



Print (2011.2.1)
1821 - 1850



Document (2011.6.144a)



Document (2011.6.144b)



Newsletter (2011.6.145)
November 21, 1944;



Certificate, Registration (2011.6.162a)



Letter (2011.6.162b)



Program (2011.6.163)



Mortgage (2011.6.168)



Document (2011.6.170)



Card, Greeting (2011.6.171)



Notecard (2011.6.172)



Letter (2011.6.173)
June 7, 1943,



Card, Greeting (2011.6.174)



Document (2011.6.175)



Declaration, Customs (2011.6.176)
December 3, 1945,



Telegram (2011.6.177)
1945,



Certificate (2011.6.178)
November 16, 1945,



Letter (2011.6.179)
April 16, 1945,



Document (2011.6.180)



Newsletter (2011.6.181)
July 23, 1943,



Certificate of Achievement (2011.6.182)
April 15, 1944,



Newsletter (2011.6.183)
May 1959,



Letter (2011.6.91)
1942,



Poster (2011.7.186)
November 9, 1973,
Alex's Candy Shop



Plaque (2011.7.187)
1920 - 1940
Alex's Candy Shop



Contract (2011.7.188)
1920 - 1940,
Alex's Candy Shop



Advertisement (2011.7.191)
1920 - 1940
Alex's Candy Shop



Menu (2011.7.219)
1920 – 1940
Alex's Candy Shop



Currency (2011.7.221)
1923,
Alex's Candy Shop



Bill of sale (2011.7.222)
1920 – 1940
Alex's Candy Shop



Advertisement (2011.7.224)
1930,
Alex's Candy Shop



Box Candy (2011.7.225)
1920 – 1940
Alex's Candy Shop



Letter (2011.7.226)
June 1928,
Alex's Candy Shop



Negative Film (2011.7.228)
1920 – 1940
Alex's Candy Shop



Bag, Pastry (2011.7.234)
1920 – 1940
Alex's Candy Shop



Bag, Pastry (2011.7.235)
1920 – 1940
Alex's Candy Shop



Card, Business (2011.7.247)
1920 – 1940,
Alex's Candy Shop



Card, Business (2011.7.248)
1920 – 1940,
Alex's Candy Shop



Card, Admittance (2011.7.249)
1920 – 1940,
Alex's Candy Shop



Bag, Money (2011.7.250)
1920 – 1940,
Alex's Candy Shop



Booklet (2011.7.251)
1920 – 1940,
Alex's Candy Shop



Envelope (2011.7.252)
1920 – 1940,
Alex's Candy Shop



Certificate, Naturalization (2011.7.255)
1902,
Alex's Candy Shop



Book, Address (2011.7.256)
1920 – 1940,
Alex's Candy Shop



Menu (2011.7.257)
1920 – 1940,
Alex's Candy Shop



Menu (2011.7.258)
1920 – 1940,
Alex's Candy Shop



Notebook (2011.7.261)
1920 – 1940,
Alex's Candy Shop



Book, Account (2011.7.262)
1920 – 1940,
Alex's Candy Shop



Book, Account (2011.7.263)
1920 - 1940,
Alex's Candy Shop



Invoice (2011.7.264b)
1920 - 1940,
Alex's Candy Shop



Wax Paper Roll (2011.7.27)
1920 - 1940,
Alex's Candy Shop



Wax Paper Roll (2011.7.36)
1920 - 1940,
Alex's Candy Shop



Box, Candy (2011.7.37)
1920 - 1940,
Alex's Candy Shop



Box, Candy (2011.7.38)
1920 - 1940,
Alex's Candy Shop



Box, Candy (2011.7.39)
1920 - 1940,
Alex's Candy Shop



Box, Candy (2011.7.40)
1920 - 1940,
Alex's Candy Shop



Box Candy (2011.7.41)
1910 – 1940
Alex's Candy Shop



Box Candy (2011.7.42)
1910 – 1940,
Alex's Candy Shop



Box Candy (2011.7.43)
1920 – 1940,
Alex's Candy Shop



Box Candy (2011.7.44)
1920 – 1940
Alex's Candy Shop



Box Candy (2011.7.46)
1920 – 1940
Alex's Candy Shop



Box Candy (2011.7.47)
1920 – 1940
Alex's Candy Shop



Booklet (2012.11.2)
Patricia Vickie Kamberos



Box (2012.12.1)
February 27, 2012, 1904 – 1967
Ting-a-Ling Candies



Certificate (2012.14.8)
1946,



Picture (2012.20.1)



Menu (2012.23.10)
June 2012
Ramova Grill Collection



Menu (2012.23.11)
June 2012
Ramova Grill Collection



Hat (2012.23.12)
Ramova Grill Collection



Drawing (2012.31.1)
circa 2010,



Print (2012.38.1)



Print (2012.38.2)



Poster (2012.40.1)
1904,



Poster (2012.40.2)
1978,



Poster (2012.40.3)



Poster (2012.40.4)
1993 – 1994



Poster (2012.40.5)
2004,



Poster (2012.40.6)
2004,



Statue (2012.42.1)
2012,



Letter (2012.49.2)



Menu, Restaurant (2012.7.5)
circa 1930
Gayety's Chocolates



Frame, Picture (2012.8.1)
February 27, 2012, 1904 – 1967



Program, Concert (2012.9.7)
1937
Spiros Saffrithis Collection



Music, Sheet (2012.9.8)
Spiros Saffrithis Collection



Music Sheet (2012.9.9)
Spiros Sathinis Collection



Receipt (2013.11.2)
September 27, 1944, 1944
Helen's Collection



Document (2013.11.3)
November 17, 1923, 1923
Helen's Collection



Receipt (2013.11.4)
July 28, 1925, 1925
Helen's Collection



Receipt (2013.11.5)
April 17, 1925, 1925
Helen's Collection



Receipt (2013.11.6)
April 26, 1922, 1922
Helen's Collection



Contract (2013.11.7)
January 18, 1923, 1923
Helen's Collection



Certificate, Award (2013.11.8)
November 10, 1986, 1986
Helen's Collection



Letter (2013.12.12)



Program (2013.12.23)



Letter (2013.12.9)
August 24, 1974,



Certificate, Award (2013.2.1)
January 16, 2013, 1969



Pattern, Needlework (2013.22.1)
circa 1925



Kit, Needlework (2013.22.5)
circa 1920,



Passport (2013.23.1)
October 16, 2013, 1932 – 1933
Madeline Marines's Objects



Passport (2013.23.2)
October 16, 2013, 1931 – 1932
Madeline Marines's Objects



Certificate, Naturalization (2013.23.3)
1942,
Madeline Marines Objects



Map (2013.3.1)
February 6, 2013, 1853
Savvas Koktzoglou's Map



Album, Postcard (2013.5.140)



Certificate, Death (2013.6.2)
April 4, 2013, 1985
Calas Family Collection



Certificate, Marriage (2013.6.3)
April 5, 2013, 1926
Calas Family Collection



Certificate, Citizenship (2013.6.4)
1940
Calas Family Collection



Certificate, Naturalization (2013.6.5)
April 8, 2013, 1920
Calas Family Collection



Passport (2013.6.6)
April 9, 2013, 1926
Calas Family Collection



Certificate, Discharge (2013.6.7)
April 10, 2013, 1919
Calas Family Collection



Certificate, Discharge (2013.6.8)
April 12, 2013, 1919
Calas Family Collection



Photograph (2014.1.1)
circa 1912,



Ledger (2014.1.15)



Ledger (2014.1.16)



Certificate, Registration (2014.1.6)
1918,



Certificate, Commemorative (2015.15.7)
February 18, 1989,



Stamp, Postage (2015.21.1)
1940 - 2005



Button (2015.21.10)
1940s,



Button (2015.21.11)
1940s,



Button (2015.21.12)
1939 - 1945



Button (2015.21.13)
1939 - 1945



Button (2015.21.14)
1939 - 1945



Pin, Lapel (2015.21.15)
2004



Button (2015.21.2)
1939 - 1945



Button (2015.21.3)
1939 – 1945



Button (2015.21.4)
1939 – 1945



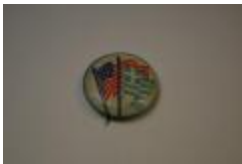
Button (2015.21.5)
1939 – 1945



Button (2015.21.6)
1939 – 1945



Button (2015.21.7)
1939 – 1945



Button (2015.21.8)
1940s,



Button (2015.21.9)
1940s,



Print (2015.26.1)



Letter (2015.7.1)
1945,



Mirror, Hand (2016.11.1)
1930s,



Mirror, Hand (2016.11.2)
1930s,



Mirror, Hand (2016.11.3)
1930s,



Mirror, Hand (2016.11.4)



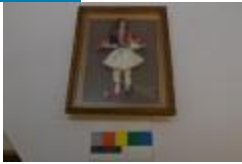
Mirror, Hand (2016.11.5)
1930s,



Print (2016.13.1)
1994,



Painting (2016.14.1)
Alexander Mohr Painting Collection



Doll (2016.4.3)



Doll (2016.4.4)



Print (2018.12.3)



Print (2018.12.4)



Ticket, Transportation (2019.12.11)
September 2, 1953



Pastel (2020.2.1)
1967
George Kokines Collection



Drawing (2020.2.2)
1982
George Kokines Collection



Print (2020.2.4)
1980s
George Kokines Collection



Painting (2020.2.5)
1998
George Kokines Collection



Painting (2020.2.6)
1998
George Kokines Collection



Painting (2020.2.7)
1996
George Kokines Collection



Sketch (2020.2.8)
1996
George Kokines Collection



Print (2021.1.1)
1987



Print (2021.1.10)
1967



Print (2021.1.11)
1967



Print (2021.1.12)
1967



Print (2021.1.13)
1967



Print (2021.1.14)
1967



Print (2021.1.15)
1967



Print (2021.1.17)
 1967



Print (2021.1.18)
 1967



Print (2021.1.19)
 1967



Print (2021.1.2)
 1967



Print (2021.1.20)
 1967



Print (2021.1.22)
 1967



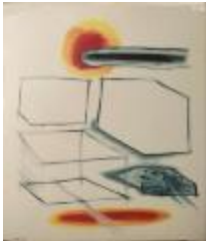
Print (2021.1.23)
1969



Print (2021.1.24)
1969



Print (2021.1.25)
1969



Print (2021.1.4)
1967



Print (2021.1.5)
1967



Print (2021.1.6)
1967



Print (2021.1.8)
1967



Print (2021.1.9)
1967



Newspaper, (2021.26.10)
October 25, 1951



Newspaper, (2021.26.12)
November 9, 1951



Newspaper, (2021.26.13)
November 24, 1957



Newspaper, (2021.26.14)
November 22, 1957



Newspaper, (2021.26.15)
April 23, 1981



Newspaper, (2021.26.16)
November 21, 1949



Newspaper, (2021.26.17)
October 14, 1966



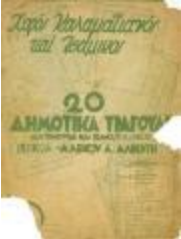
Newspaper (2021.26.18)
1950s



Music, Sheet (2021.26.19)
March 1949



Music, Sheet (2021.26.20)
1947



Music, Sheet (2021.26.25)
1940s



Music, Sheet (2021.26.27)
March 1949



Music, Sheet (2021.26.28)
1947



Music, Sheet (2021.26.29)
1949



Music, Sheet (2021.26.30)
1942-1943



Music, Sheet (2021.26.31)
1946



Music, Sheet (2021.26.33)
1940s



Music, Sheet (2021.26.34)
1947



Music, Sheet (2021.26.35)
1935



Menu (2022.15.3)
1953 – 2007



Menu (2022.15.4)
1970s



Drawing (2022.16.10)
1942
Anthony J Mourek collection donated by Despina Kotsapouikis



Drawing (2022.16.100)
June 24, 1941
Anthony J Mourek collection donated by Despina Kotsapouikis



Drawing (2022.16.101)
1941
Anthony J Mourek collection donated by Despina Kotsapouikis



Drawing (2022.16.11)
1930s
Anthony J Mourek collection donated by Despina Kotsapouikis



Drawing (2022.16.12)
1930s
Anthony J Mourek collection donated by Despina Kotsapouikis



Drawing (2022.16.13)
July 16, 1941

Anthony J Mourek collection donated by Despina Kotsapouikis



Drawing (2022.16.14)
1942

Anthony J Mourek collection donated by Despina Kotsapouikis



Drawing (2022.16.15)
1942

Anthony J Mourek collection donated by Despina Kotsapouikis



Drawing (2022.16.16)
1942

Anthony J Mourek collection donated by Despina Kotsapouikis



Drawing (2022.16.17)
1942

Anthony J Mourek collection donated by Despina Kotsapouikis



Drawing (2022.16.18)
1942

Anthony J Mourek collection donated by Despina Kotsapouikis



Drawing (2022.16.19)
1942

Anthony J Mourek collection donated by Despina Kotsapouikis



Drawing (2022.16.2)

July 23, 1941

Anthony J Mourek collection donated by Despina Kotsapouikis



Drawing (2022.16.20)

October 8, 1941

Anthony J Mourek collection donated by Despina Kotsapouikis



Drawing (2022.16.21)

1944

Anthony J Mourek collection donated by Despina Kotsapouikis



Drawing (2022.16.22)

1942

Anthony J Mourek collection donated by Despina Kotsapouikis



Drawing (2022.16.23)

1942

Anthony J Mourek collection donated by Despina Kotsapouikis



Drawing (2022.16.24)

1940

Anthony J Mourek collection donated by Despina Kotsapouikis



Drawing (2022.16.25)

1941

Anthony J Mourek collection donated by Despina Kotsapouikis



Drawing (2022.16.26)

1941

Anthony J Mourek collection donated by Despina Kotsapouikis



Drawing (2022.16.27)

1941

Anthony J Mourek collection donated by Despina Kotsapouikis



Drawing (2022.16.28)

1941

Anthony J Mourek collection donated by Despina Kotsapouikis



Drawing (2022.16.29)

September 2, 1941

Anthony J Mourek collection donated by Despina Kotsapouikis



Drawing (2022.16.3)

June 24, 1941

Anthony J Mourek collection donated by Despina Kotsapouikis



Drawing (2022.16.32)

1941

Anthony J Mourek collection donated by Despina Kotsapouikis



Drawing (2022.16.33)

1941
Anthony J Mourek collection donated by Despina Kotsapouikis



Drawing (2022.16.34)

August 13, 1941
Anthony J Mourek collection donated by Despina Kotsapouikis



Drawing (2022.16.35)

1941
Anthony J Mourek collection donated by Despina Kotsapouikis



Drawing (2022.16.36)

1941
Anthony J Mourek collection donated by Despina Kotsapouikis



Drawing (2022.16.37)

July 23, 1941
Anthony J Mourek collection donated by Despina Kotsapouikis



Drawing (2022.16.38)

1941
Anthony J Mourek collection donated by Despina Kotsapouikis



Drawing (2022.16.4)
1942

Anthony J Mourek collection donated by Despina Kotsapouikis



Drawing (2022.16.40)
1941

Anthony J Mourek collection donated by Despina Kotsapouikis



Drawing (2022.16.41)
1941

Anthony J Mourek collection donated by Despina Kotsapouikis



Drawing (2022.16.42)
1941

Anthony J Mourek collection donated by Despina Kotsapouikis



Drawing (2022.16.43)
1940

Anthony J Mourek collection donated by Despina Kotsapouikis



Drawing (2022.16.44)
1941

Anthony J Mourek collection donated by Despina Kotsapouikis



Drawing (2022.16.45)

1941
Anthony J Mourek collection donated by Despina Kotsapouikis



Drawing (2022.16.46)

1941
Anthony J Mourek collection donated by Despina Kotsapouikis



Drawing (2022.16.48)

1937
Anthony J Mourek collection donated by Despina Kotsapouikis



Drawing (2022.16.49)

1937
Anthony J Mourek collection donated by Despina Kotsapouikis



Drawing (2022.16.5)

July 9, 1941
Anthony J Mourek collection donated by Despina Kotsapouikis



Drawing (2022.16.50)

1937
Anthony J Mourek collection donated by Despina Kotsapouikis



Drawing (2022.16.51)

1937
Anthony J Mourek collection donated by Despina Kotsapouikis



Drawing (2022.16.52)

1940s
Anthony J Mourek collection donated by Despina Kotsapouikis



Drawing (2022.16.53)

1937
Anthony J Mourek collection donated by Despina Kotsapouikis



Drawing (2022.16.54)

1937
Anthony J Mourek collection donated by Despina Kotsapouikis



Drawing (2022.16.55)

October 1, 1941
Anthony J Mourek collection donated by Despina Kotsapouikis



Drawing (2022.16.56)

1941
Anthony J Mourek collection donated by Despina Kotsapouikis



Drawing (2022.16.57)
circa 1937-1945

Anthony J Mourek collection donated by Despina Kotsapouikis



Drawing (2022.16.58)
1942

Anthony J Mourek collection donated by Despina Kotsapouikis



Drawing (2022.16.59)
1942

Anthony J Mourek collection donated by Despina Kotsapouikis



Drawing (2022.16.6)
July 30, 1941

Anthony J Mourek collection donated by Despina Kotsapouikis



Drawing (2022.16.62)
September 1941

Anthony J Mourek collection donated by Despina Kotsapouikis



Drawing (2022.16.63)
1941

Anthony J Mourek collection donated by Despina Kotsapouikis



Drawing (2022.16.65)
1939

Anthony J Mourek collection donated by Despina Kotsapouikis



Drawing (2022.16.66)
1939

Anthony J Mourek collection donated by Despina Kotsapouikis



Drawing (2022.16.67)
1940

Anthony J Mourek collection donated by Despina Kotsapouikis



Drawing (2022.16.68)
1940

Anthony J Mourek collection donated by Despina Kotsapouikis



Drawing (2022.16.69)
1940

Anthony J Mourek collection donated by Despina Kotsapouikis



Drawing (2022.16.7)
1937

Anthony J Mourek collection donated by Despina Kotsapouikis



Drawing (2022.16.70)

1940

Anthony J Mourek collection donated by Despina Kotsapouikis



Drawing (2022.16.71)

1940

Anthony J Mourek collection donated by Despina Kotsapouikis



Drawing (2022.16.72)

1940

Anthony J Mourek collection donated by Despina Kotsapouikis



Drawing (2022.16.73)

1940

Anthony J Mourek collection donated by Despina Kotsapouikis



Drawing (2022.16.75)

1940

Anthony J Mourek collection donated by Despina Kotsapouikis



Drawing (2022.16.76)

1939

Anthony J Mourek collection donated by Despina Kotsapouikis



Drawing (2022.16.77)

1939

Anthony J Mourek collection donated by Despina Kotsapouikis



Drawing (2022.16.78)

1939

Anthony J Mourek collection donated by Despina Kotsapouikis



Drawing (2022.16.79)

1938

Anthony J Mourek collection donated by Despina Kotsapouikis



Drawing (2022.16.8)

1940

Anthony J Mourek collection donated by Despina Kotsapouikis



Drawing (2022.16.81)

1938

Anthony J Mourek collection donated by Despina Kotsapouikis



Drawing (2022.16.82)

1938

Anthony J Mourek collection donated by Despina Kotsapouikis



Drawing (2022.16.83)
1939

Anthony J Mourek collection donated by Despina Kotsapouikis



Drawing (2022.16.84)
1939

Anthony J Mourek collection donated by Despina Kotsapouikis



Drawing (2022.16.85)
1940

Anthony J Mourek collection donated by Despina Kotsapouikis



Drawing (2022.16.86)
1940

Anthony J Mourek collection donated by Despina Kotsapouikis



Drawing (2022.16.87)
1940

Anthony J Mourek collection donated by Despina Kotsapouikis



Drawing (2022.16.88)
1939

Anthony J Mourek collection donated by Despina Kotsapouikis



Drawing (2022.16.89)

1938

Anthony J Mourek collection donated by Despina Kotsapouikis



Drawing (2022.16.9)

1940

Anthony J Mourek collection donated by Despina Kotsapouikis



Drawing (2022.16.90)

1938

Anthony J Mourek collection donated by Despina Kotsapouikis



Drawing (2022.16.91)

1938

Anthony J Mourek collection donated by Despina Kotsapouikis



Drawing (2022.16.92)

1938

Anthony J Mourek collection donated by Despina Kotsapouikis



Drawing (2022.16.93)

1939

Anthony J Mourek collection donated by Despina Kotsapouikis



Drawing (2022.16.94)
Anthony J Mourek collection donated by Despina Kotsapouikis



Drawing (2022.16.95)
Anthony J Mourek collection donated by Despina Kotsapouikis



Drawing (2022.16.96)
1938



Drawing (2022.16.97)
August 6, 1941
Anthony J Mourek collection donated by Despina Kotsapouikis



Drawing (2022.16.98)
1939 – 1945
Anthony J Mourek collection donated by Despina Kotsapouikis



Menu (2022.24)
1953 – 2007



Postcard (2023.8.1)
1996



Icon (F2013.4)



Map (F2013.46)
circa 1700,
Nicholas Topping Collection



Drawing (F2013.6)



Letter (F2014.46)
1904,



Currency (F2014.50)
1941,



Currency (F2014.51)
1941,



Currency (F2014.52)
1941,



Currency (F2014.53)
1941,



Currency (F2014.54)
1940,



Currency (F2014.55)
1944,



Currency (F2014.56)
1944,



Currency (F2014.57)
1940,



Currency (F2014.58)
1944,



Currency (F2014.59)
1941,



Currency (F2014.60)
1944,



Currency (F2014.61)
1944,



Currency (F2014.65)
1944,



Currency (F2014.68)
1942,



Currency (F2014.70)
1944,



Currency (F2014.71)
1943,



Currency (F2014.72)
1942,



Currency (F2014.73)
1942,



Currency (F2014.74)
1944,



Currency (F2014.75)
1944,



Currency (F2014.76)
1944,



Currency (F2014.77)
1944,



Currency (F2014.78)
1947,



Certificate (F2014.88)
1958,



Certificate, Achievement (F2014.92)
November 24, 1958,



Certificate, Achievement (F2014.93)
November 21, 1952,



Certificate, Achievement (F2014.94)
December 7, 1964,



Bond (F2014.99)
December 15, 1942,



Newspaper (F2015.11)
January 1, 1978,



Announcement, Funeral (F2015.13)
November 28, 1990,



Certificate, Achievement (F2015.14)
May 31, 1960,



Album, Photograph (F2015.23)
1937 – 1937



Certificate (F2015.34)
1960,



Book (F2015.37)



Document (F2015.38)



Certificate, Achievement (F2015.53)
1919,



Pin, Campaign (F2016.10)
1966 – 1977



Newspaper (F2016.106)



Pin, Campaign (F2016.12)
1983 – 1984



Pin, Campaign (F2016.13)
1980,



Pin, Campaign (F2016.14)
1974 – 1976



Certificate (F2016.147)



Journal (F2016.148)
1990,



Certificate (F2016.158)
1960 – 1961



Pin, Campaign (F2016.16)
1991,



Pin, Campaign (F2016.17)



Diploma (F2016.172)
1935,



Award (F2016.173)
1944



Certificate, Membership (F2016.174)
August 1, 1934



Handbill, Political (F2016.18)
1972,



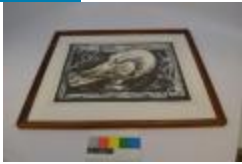
Invitation (F2016.190)
1987,



Document (F2016.202)



Album, Photograph (F2016.226)
1996-1997,



Print (F2016.227)



Photograph (F2016.235)



Sign, Traffic (F2016.38)



Sign, Traffic (F2016.39)



Sign, Traffic (F2016.40)



Sign, Traffic (F2016.41)



Sign, Traffic (F2016.42)



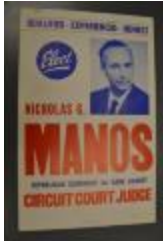
Sign, Traffic (F2016.43)



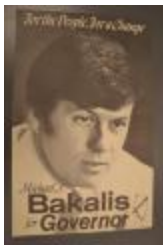
Pin, Political (F2016.5)
1973-2002



Pin, Political (F2016.6)
1962 – 1992



Poster, Political (F2016.62)
1968,



Poster, Political (F2016.63)



Poster, Political (F2016.64)



Poster, Political (F2016.65)



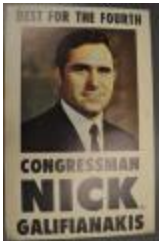
Poster, Political (F2016.66)
1991,



Poster, Political (F2016.67)



Poster, Political (F2016.68)



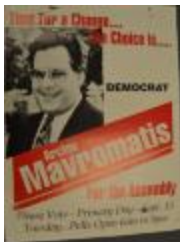
Poster, Political (F2016.69)



Pin, Campaign (F2016.7)
1988,



Poster, Political (F2016.70)



Poster, Political (F2016.71)
1983,



Poster, Political (F2016.72)



Poster, Political (F2016.73)
1988,



Poster, Political (F2016.74)



Poster, Political (F2016.77)
circa 1954,



Pin, Campaign (F2016.8)



Newspaper (F2016.88)



Poster (F2016.89)
1994,



Pin, Campaign (F2016.9)
1991,