

Book (010884/07-1)
1933,



Shoe (1993.10A)
February 23, 1930



Shoe (1993.10B)
February 23, 1930



Pillowcase (1993.18B)
1920s, 1920 - 1930



Box, Candy (1993.29.4)
1930s,
DELOS CANDIES



Mirror, Hand (1993.29.7.A)
circa 1930,



Set, Manicure (1993.29.7.D)
circa 1930,



Buffer (1993.29.7C)
circa 1930,



Stefanothiki (1993.29.8)
November 6, 1930,



Photograph (1993.36.2)
1939



Card, Membership (1993.42.18.10)
1930,



Card, Membership (1993.42.18.11)
1931,



Card, Membership (1993.42.18.12)
1933,



Card, Membership (1993.42.18.13)
1934,



Card, Membership (1993.42.18.14)
1935,



Card, Membership (1993.42.18.16)
1937,



Card, Membership (1993.42.18.17)
1938;



Card, Membership (1993.42.21.1)
August 19, 1936,



Blouse (1993.59.1)
1920-1930
Coula H. Textile Collection



Stefana (1993.62.1)
1932, 1932



Purse (1993.63.1)
1920-1939



Photograph (1993.69.1)
1933



Photograph (1993.69.21)
1923-1930



Photograph (1993.69.22)
circa 1930



Photograph (1993.69.28)
1933



Photograph (1993.69.31)
1933,



Photograph (1993.69.32)
1931



Photograph (1993.69.37)
1934



Correspondence (1993.70.4)
November 12, 1939



Correspondence (1993.70.5)
November 2, 1939,



Correspondence (1993.70.8)
February 7, 1933



Correspondence (1993.70.9)
November 18, 1939



Certificate (1993.8.1)
1939 - 1945



Cap, Service (1994.116.1)
1939 - 1945
Margaret's Collection



Box, Candy (1994.127.3)
1927 - 1937
SUGAR BOWL SWEET SHOP



Bottle (1994.13.21)
1930 - 1950
Georgia Kotsiopoulos Collection



Bottle (1994.13.22)
March 6, 2013, 1930 - 1950
Georgia Kotsiopoulos Collection



Photograph (1994.133.1)
1936,



Photograph (1994.135.2)
1931-1933



Picture (1994.136.2)
1930s,



Photograph (1994.137.1)
1930s,



Shirt (1994.138.1.A)
1930 - 1950



Shirt (1994.138.1.B)
1930 - 1950



Pendant, Religious (1994.14.3A)
1936 - 1937



Pendant, Religious (1994.14.3B)
1936 - 1937



Certificate, Membership (1994.26.1)
August 4, 1931,
Gene Douglas Collection



Flatcap (1994.32.1)
1934-1989



Collar (1994.32.3A)
circa 1925-1930,



Collar (1994.32.3B)
circa 1925-1930,



Collar (1994.32.3C)
circa 1925-1930,



Collar (1994.32.3D)
circa 1925-1930,



Collar (1994.32.3E)
circa 1925-1930,



Collar (1994.32.3F)
circa 1925-1930,



Collar (1994.32.3G)
circa 1925-1930,



Vase (1994.37.1)
1938,



Vase (1994.37.2)
1938,



Vase (1994.37.3)
1938,



Saltshaker (1994.37.4)
1938,



Petticoat (1994.41.12.A)
February 18, 2013, 1880 – 1930
Marina Textile Collection



Certificate, Naturalization (1994.41.13)
1930s



Icon (1994.41.15)
February 25, 2013, 1860 – 1930
Marina's Collection



Purse, Change (1994.41.16.A)
1900 – 1930



Purse, Change (1994.41.16.B)
1900 – 1930



Clasp (1994.41.21)
1930s



Handkerchief (1994.41.9.B)
February 15, 2013, 1920 - 1940
Marina Textile Collection



Postcard (1994.48.1.A)
1930,



Postcard (1994.48.1.B)
1930,



Postcard (1994.48.1.C)
1930,



Postcard (1994.48.1.D)
1930,



Postcard (1994.48.1.E)
1930,



Postcard (1994.48.1.F)
1930,



Postcard (1994.48.1.G)
1930,



Postcard (1994.48.1.H)
1930,



Postcard (1994.48.1.I)
1930,



Postcard (1994.48.1.J)
1930,



Postcard (1994.48.1.K)
1930,



Postcard (1994.48.1.L)
1930,



Postcard (1994.48.1.M)
1930,



Postcard (1994.48.1.N)
1930,



Postcard (1994.48.1.O)
1930,



Postcard (1994.48.1.P)
1930,



Postcard (1994.48.1.Q)
1930,



Postcard (1994.48.1.R)
1930,



Postcard (1994.48.1.S)
1930,



Badge (1994.57)
August 18-25, 1935



Photograph (1994.65.1B)
1930,



Photograph (1994.65.1E)
1934,



Photograph (1994.65.1G)
1931,



Photograph (1994.65.1L)
1930,



Photograph (1994.65.1N)
1934,



Photograph (1994.65.1P)
1930s,



Photograph (1994.65.1Q)
1934,



Photograph (1994.65.1R)
1934,



Photograph (1994.65.1X)
1939,



Photograph (1994.65.1Z)
1934,



Photograph (1994.65.2)
1931,



Doll (1994.8.1)
circa 1936



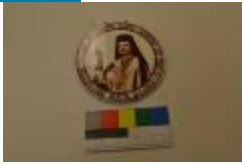
Cap, Service (1994.8.3)
1920 - 1935



Pants (1995.11.2.B)
1939,



Vest (1995.11.2.C)
1939, 1939



Plate, Commemorative (1995.19.2)
circa 1927 - 1932,



Cape (1995.45.2)
1910 - 1930
Estelle Collection



Case, Violin (1995.50.1.C)
circa 1939,



Photograph (1995.55.2.2)
January 1, 1931
Violet's Collection



Photograph (1995.9.1)
1920 - 1935
Crystella and Tess's Collection



Plate, Engraving (1996.50.2)
March 6, 2013, 1933 - 1970
Kalpake Family Collection



Plate, Engraving (1996.50.3)
March 6, 2013, 1933 - 1970
Kalpake Family Collection



Newspaper, Clipping (1996.50.6)
February 1, 1932,



Certificate, Citizenship (1996.56.4)
January 6, 1938,



Typewriter, Manual (1996.57.1)
1920 - 1939,



Ad, Newspaper (1996.64.15.A)
April 12, 2013, 1936 - 2013
CUPID CANDIES



Gown, Wedding (1996.83)
1938, 1938



Medal, Commemorative (1996.98.2)
1940, 1916 - 1940
Dr. Anthony and Maria Zannis Collection



Photograph (1997.44.4)
1930s,
Coula's Collection



Photograph (1997.44.6)
1930 - 1949
Coula's Collection



Photograph (1997.44.6.1)
1930-1949
Coula's Collection



Photograph (1997.44.6.1.B)
1930-1949
Coula's Collection



Photograph (1997.44.6.2)
1930-1949
Coula's Collection



Photograph (1997.44.6.2.A)
1930-1949
Coula's Collection



Photograph (1997.44.6.2.B)
1930-1949
Coula's Collection



Photograph (1997.44.6.2.C)
1930-1949
Coula's Collection



Photograph (1997.44.6.2.D)
1930-1949
Coula's Collection



Photograph (1997.44.7)
1930-1949
Coula's Collection



Photograph (1997.44.7.1)
1930 - 1949
Coula's Collection



Photograph (1997.44.7.2)
1930 - 1949
Coula's Collection



Photograph (1997.44.7.3)
1930 - 1949
Coula's Collection



Bedsread (1998.1.3)
1920 - 1930, 1920 - 1930



Knife (1998.16.2)
1930 - 1940



Knife, Carving (1998.16.3)
1930 - 1940



Knife (1998.16.4)
February 27, 2013, 1930 - 1940



Knife (1998.16.5)
February 27, 2013, 1930 - 1940



Knife (1998.16.6)
February 27, 2013, 1930 – 1940



Knife (1998.16.7)
February 27, 2013, 1930 – 1940



Knife (1998.16.8)
February 27, 2013, 1930 – 1940



Photograph (1998.40.1)
1939 – 1945
George's Collection



Photograph (1998.40.2)
1939 – 1945
George's Collection



Photograph (1998.41.1)
1939 – 1943
Helen's Collection



Photograph (1998.49.1)
1939 – 1945
Ulysses's Collection



Photograph (1998.51.1)
1939–1945
Helen's Collection



Photograph (1998.54.1)
1939–1945



Photograph (1998.54.3)
1939–1945



Photograph (1998.54.4)
1939–1945



Medal, Military (1998.54.8)
1939–1945
Georgia Kotsiopoulos Collection



Plaque (1999.11.3)
1934–1943
Arthur Peponis Collection



Photograph (1999.11.9)
1925–1950,
Arthur Peponis Collection



Photograph (2000.10.9)
1939 - 1945
Ann's Collection



Doily (2000.3.15)
before 1931,



Nightgown (2000.3.17)
February 22, 2013, 1900 - 1930
Mae C Collection



Photograph (2000.3.29)
March 11, 1935, 1935
Mae's Collection



Photograph (2000.3.30)
1935
Mae's Collection



Letter (2001.1.13)
1938



Ticket (2001.1.2)
November 24, 1932



Map (2001.10.7)
circa 1935,



Cross (2001.18.6)
1920 - 1930



Photograph (2001.23.1)
1933,



Napkin (2001.31.29.A)
November 23, 2001, 1936



Napkin (2001.31.29.B)
November 23, 2001, 1936



Napkin (2001.31.29.C)
November 23, 2001, 1936



Napkin (2001.31.29.D)
November 23, 2001, 1936



Napkin (2001.31.29.E)
November 23, 2001, 1936



Napkin (2001.31.29.F)
November 23, 2001, 1936



Napkin (2001.31.29.G)
November 23, 2001, 1936



Napkin (2001.31.29.H)
November 23, 2001, 1936



Napkin (2001.31.29.J)
November 23, 2001, 1936



Napkin (2001.31.29.J)
November 23, 2001, 1936



Napkin (2001.31.29.K)
November 23, 2001, 1936



Napkin (2001.31.29.L)
November 23, 2001, 1936



Runner, Table (2001.31.30)
before 1936,



Doily (2001.31.32.A)
1936,



Doily (2001.31.32.B)
1936,



Mat, Table (2001.31.39.A)
November 23, 2001, 1936



Mat, Table (2001.31.39.B)
November 23, 2001, 1936



Tablecloth (2001.31.41)
before 1936,



Jug (2001.38.30)
1928 - 1950



Fez (2001.44.1)
circa 1937,



Medal, Commemorative (2001.47.31)
May 4, 1938,
Daisy's Collection



Typewriter, Manual (2001.5.1)
1924 - 1939



Candle (2001.54.1.A)
1937,



Candle (2001.54.1.B)
1937,



Photograph (2002.14.1)
1930,



Photograph (2002.2.2)
1932,



Microfilm (2002.36.7)
1937,



Cassock (2002.51.23)
1939,



Photograph (2002.51.28a)
1930s,



Photograph (2002.51.28b)
1930s,



Book (2002.51.31)
1936,



Pillow, Wedding (2002.52.10)
1936, 1936



Ticket (2002.52.62.1)
1937,



Ticket (2002.52.62.2)
1937,



Ticket (2002.52.62.3)
1937,



Ticket (2002.52.62.4)
1937,



Program (2002.52.66)
1937,



Stefanhtiki (2002.52.9)
1936, 1936



Photograph (2002.65.1)
1939-1940



Postcard (2003.26.100)
1930s, 1930s
George Phillos Photograph Collection



Photograph (2003.26.101)
1930s, 1930s
George Phillos Photograph Collection



Photograph (2003.26.102)
1930s, 1930s
George Phillos Photograph Collection



Postcard (2003.26.103)
1930s, 1930s
George Phillos Photograph Collection



Postcard (2003.26.105)
1930s, 1930s
George Phillos Photograph Collection



Postcard (2003.26.106)
1930s
George Phillos Photograph Collection



Postcard (2003.26.107)
1930s, 1930s
George Phillos Photograph Collection



Postcard (2003.26.109)
1930s, 1930s
George Phillos Photograph Collection



Photograph (2003.26.110)
1930s, 1930s
George Phillos Photograph Collection



Photograph (2003.26.111)
1930s, 1930s
George Phillos Photograph Collection



Postcard (2003.26.112)
1930s
George Phillos Photograph Collection



Postcard (2003.26.113)
circa 1930 - 1949, 1930 - 1949
George Phillos Photograph Collection



Photograph (2003.26.116)
1933,
George Phillos Photograph Collection



Photograph (2003.26.118)
1934,
George Phillos Photograph Collection



Photograph (2003.26.119)
1933,
George Phillos Photograph Collection



Postcard, Picture (2003.26.130)
1930s



Postcard, Picture (2003.26.131)
1930s



Postcard, Picture (2003.26.132)
1930s



Postcard, Picture (2003.26.133)
1930s



Postcard, Picture (2003.26.135)
1930s



Postcard, Picture (2003.26.136)
1930s
George Phillos Photograph Collection



Postcard, Picture (2003.26.137)
1930s
George Phillos Photograph Collection



Postcard, Picture (2003.26.138)
1930s
George Phillos Photograph Collection



Postcard, Picture (2003.26.139)
1930s
George Phillos Photograph Collection



Postcard, Picture (2003.26.140)
1930s
George Phillos Photograph Collection



Postcard, Picture (2003.26.142)
1930s
George Phillos Photograph Collection



Postcard, Picture (2003.26.143)
1930s
George Phillos Photograph Collection



Postcard, Picture (2003.26.144)
1930s
George Phillos Photograph Collection



Postcard, Picture (2003.26.145)
1930s
George Phillos Photograph Collection



Postcard, Picture (2003.26.146)
1930s
George Phillos Photograph Collection



Postcard, Picture (2003.26.147)
1930s
George Phillos Photograph Collection



Postcard, Picture (2003.26.148)
1930s



Postcard, Picture (2003.26.149)
1930s
George Phillos Photograph Collection



Postcard, Picture (2003.26.150)
1930s



Postcard, Picture (2003.26.151)
1930s
George Phillos Photograph Collection



Postcard, Picture (2003.26.152)
1930s
George Phillos Photograph Collection



Postcard, Picture (2003.26.153)
1930s
George Phillos Photograph Collection



Postcard, Picture (2003.26.154)
1930s
George Phillos Photograph Collection



Postcard, Picture (2003.26.155)
1930s
George Phillos Photograph Collection



Postcard, Picture (2003.26.156)
1930s
George Phillos Photograph Collection



Postcard, Picture (2003.26.157)
1930s



Postcard, Picture (2003.26.158)
1930s
George Phillos Photograph Collection



Postcard, Picture (2003.26.159)
1930s
George Phillos Photograph Collection



Postcard, Picture (2003.26.160)
1930s
George Phillos Photograph Collection



Postcard, Picture (2003.26.161)
1930s
George Phillos Photograph Collection



Postcard, Picture (2003.26.162)
1930s
George Phillos Photograph Collection



Postcard, Picture (2003.26.164)
1930s
George Phillos Photograph Collection



Postcard, Picture (2003.26.166)
1930s
George Phillos Photograph Collection



Postcard, Picture (2003.26.167)
1930s
George Phillos Photograph Collection



Postcard, Picture (2003.26.168)
1930s
George Phillos Photograph Collection



Postcard, Picture (2003.26.169)
1930s
George Phillos Photograph Collection



Postcard, Picture (2003.26.170)
1930s
George Phillos Photograph Collection



Postcard, Picture (2003.26.171)
1930s
George Phillos Photograph Collection



Postcard, Picture (2003.26.172)
1930s
George Phillos Photograph Collection



Postcard, Picture (2003.26.173)
1930s
George Phillos Photograph Collection



Postcard, Picture (2003.26.174)
1930s
George Phillos Photograph Collection



Postcard, Picture (2003.26.175)
1930s
George Phillos Photograph Collection



Postcard, Picture (2003.26.176)
1930s
George Phillos Photograph Collection



Postcard, Picture (2003.26.177)
1930s
George Phillos Photograph Collection



Postcard, Picture (2003.26.178)
1930s
George Phillos Photograph Collection



Postcard, Picture (2003.26.179)
1930s
George Phillos Photograph Collection



Postcard, Picture (2003.26.180)
1930s
George Phillos Photograph Collection



Postcard, Picture (2003.26.181)
1930s
George Phillos Photograph Collection



Postcard, Picture (2003.26.182)
1930s
George Phillos Photograph Collection



Postcard, Picture (2003.26.183)
1930s
George Phillos Photograph Collection



Postcard, Picture (2003.26.184)
1930s
George Phillos Photograph Collection



Postcard, Picture (2003.26.185)
1930s
George Phillos Photograph Collection



Postcard, Picture (2003.26.186)
1930s
George Phillos Photograph Collection



Postcard, Picture (2003.26.187)
1930s
George Phillos Photograph Collection



Postcard, Picture (2003.26.188)
1930s
George Phillos Photograph Collection



Postcard, Picture (2003.26.189)
1930s
George Phillos Photograph Collection



Postcard, Picture (2003.26.190)
1930s
George Phillos Photograph Collection



Postcard, Picture (2003.26.191)
1930s



Postcard, Picture (2003.26.192)
1930s
George Phillos Photograph Collection



Postcard, Picture (2003.26.193)
1930s
George Phillos Photograph Collection



Postcard, Picture (2003.26.194)
1930s
George Phillos Photograph Collection



Postcard, Picture (2003.26.195)
1930s
George Phillos Photograph Collection



Postcard, Picture (2003.26.196)
1930s
George Phillos Photograph Collection



Postcard, Picture (2003.26.197)
1930s
George Phillos Photograph Collection



Postcard, Picture (2003.26.198)
1930s
George Phillos Photograph Collection



Postcard, Picture (2003.26.199)
1930s
George Phillos Photograph Collection



Postcard, Picture (2003.26.200)
1930s
George Phillos Photograph Collection



Postcard, Picture (2003.26.201)
1930s
George Phillos Photograph Collection



Postcard, Picture (2003.26.202)
1930s
George Phillos Photograph Collection



Postcard, Picture (2003.26.203)
1930s
George Phillos Photograph Collection



Postcard, Picture (2003.26.204)
1930s
George Phillos Photograph Collection



Postcard, Picture (2003.26.205)
1930s
George Phillos Photograph Collection



Postcard, Picture (2003.26.206)
1930s



Postcard, Picture (2003.26.207)
1930s
George Phillos Photograph Collection



Postcard, Picture (2003.26.208)
1930s
George Phillos Photograph Collection



Photograph (2003.26.209)
1933,
George Phillos Photograph Collection



Photograph (2003.26.210)
1933,
George Phillos Photograph Collection



Photograph (2003.26.211)
1933,
George Phillos Photograph Collection



Photograph (2003.26.212)
1933,
George Phillos Photograph Collection



Photograph (2003.26.213)
1933,
George Phillos Photograph Collection



Photograph (2003.26.214)
1933,
George Phillos Photograph Collection



Photograph (2003.26.215)
1933,
George Phillos Photograph Collection



Photograph (2003.26.216)
1933,
George Phillos Photograph Collection



Photograph (2003.26.217)
1933,
George Phillos Photograph Collection



Photograph (2003.26.218)
1933,
George Phillos Photograph Collection



1933,
Photograph (2003.26.219)
George Phillos Photograph Collection



1933,
Photograph (2003.26.220)
George Phillos Photograph Collection



1933,
Photograph (2003.26.221)
George Phillos Photograph Collection



1933,
Photograph (2003.26.222)
George Phillos Photograph Collection



1933,
Photograph (2003.26.223)
George Phillos Photograph Collection



1933,
Photograph (2003.26.224)
George Phillos Photograph Collection



1933,
Photograph (2003.26.225)
George Phillos Photograph Collection



1933,
Photograph (2003.26.226)
George Phillos Photograph Collection



1933,
Photograph (2003.26.227)
George Phillos Photograph Collection



Photograph (2003.26.228)
1933,
George Phillos Photograph Collection



Photograph (2003.26.229)
1933,
George Phillos Photograph Collection



Photograph (2003.26.230)
1933,
George Phillos Photograph Collection



Photograph (2003.26.231)
1933,
George Phillos Photograph Collection



Photograph (2003.26.232)
1933,
George Phillos Photograph Collection



Note (2003.26.233)
1933,
George Phillos Photograph Collection



Note (2003.26.234)
1933,
George Phillos Photograph Collection



Portrait (2003.26.235)
1933



Portrait (2003.26.236)
1933,
George Phillos Photograph Collection



Portrait (2003.26.237)
1933,
George Phillos Photograph Collection



Portrait (2003.26.238)
1933,
George Phillos Photograph Collection



Photograph (2003.26.239)
1933,
George Phillos Photograph Collection



Photograph (2003.26.240)
1933,
George Phillos Photograph Collection



Photograph (2003.26.241)
1933,
George Phillos Photograph Collection



Photograph (2003.26.242)
1933,
George Phillos Photograph Collection



Photograph (2003.26.243)
1933,
George Phillos Photograph Collection



Photograph (2003.26.244)
1933,
George Phillos Photograph Collection



Photograph (2003.26.245)
1933,
George Phillos Photograph Collection



Photograph (2003.26.246)
1933,
George Phillos Photograph Collection



Photograph (2003.26.247)
1933,



Photograph (2003.26.248)
1933,
George Phillos Photograph Collection



Photograph (2003.26.249)
1933,
George Phillos Photograph Collection



Photograph (2003.26.250)
1933,
George Phillos Photograph Collection



Photograph (2003.26.251)
1933,
George Phillos Photograph Collection



Photograph (2003.26.252)
1933,
George Phillos Photograph Collection



Photograph (2003.26.253)
1933,
George Phillos Photograph Collection



Photograph (2003.26.255)
1933,
George Phillos Photograph Collection



Photograph (2003.26.256)
1933,
George Phillos Photograph Collection



Photograph (2003.26.257)
1933,
George Phillos Photograph Collection



Photograph (2003.26.258)
1933,
George Phillos Photograph Collection



Photograph (2003.26.259)
1933,
George Phillos Photograph Collection



Photograph (2003.26.260)
1933,
George Phillos Photograph Collection



Photograph (2003.26.261)
1933,
George Phillos Photograph Collection



Photograph (2003.26.262)
1933,
George Phillos Photograph Collection



Photograph (2003.26.263)
1933,
George Phillos Photograph Collection



Photograph (2003.26.264)
1933,
George Phillos Photograph Collection



Photograph (2003.26.265)
1933,
George Phillos Photograph Collection



Photograph (2003.26.266)
1933,
George Phillos Photograph Collection



Photograph (2003.26.267)
1933,
George Phillos Photograph Collection



Photograph (2003.26.268)
1933,
George Phillos Photograph Collection



Photograph (2003.26.269)
1933,
George Phillos Photograph Collection



Photograph (2003.26.270)
1933,
George Phillos Photograph Collection



Photograph (2003.26.271)
1933,
George Phillos Photograph Collection



Photograph (2003.26.272)
1933,
George Phillos Photograph Collection



Photograph (2003.26.273)
1933,
George Phillos Photograph Collection



Photograph (2003.26.274)
1933,
George Phillos Photograph Collection



Photograph (2003.26.275)
1933,
George Phillos Photograph Collection



Photograph (2003.26.276)
1933,
George Phillos Photograph Collection



Photograph (2003.26.277)
1933,
George Phillos Photograph Collection



Photograph (2003.26.278)
1933,
George Phillos Photograph Collection



Photograph (2003.26.279)
1933,
George Phillos Photograph Collection



Photograph (2003.26.280)
1933,
George Phillos Photograph Collection



Photograph (2003.26.281)
1933,
George Phillos Photograph Collection



Photograph (2003.26.282)
1933,
George Phillos Photograph Collection



Photograph (2003.26.283)
1933,
George Phillos Photograph Collection



Photograph (2003.26.284)
1933,
George Phillos Photograph Collection



Photograph (2003.26.285)
1933,
George Phillos Photograph Collection



Photograph (2003.26.286)
1933,
George Phillos Photograph Collection



Photograph (2003.26.287)
1933,
George Phillos Photograph Collection



Photograph (2003.26.288)
1933,
George Phillos Photograph Collection



Photograph (2003.26.289)
1933,
George Phillos Photograph Collection



Photograph (2003.26.290)
1933,
George Phillos Photograph Collection



Photograph (2003.26.291)
1933,
George Phillos Photograph Collection



Photograph (2003.26.292)
1933,
George Phillos Photograph Collection



Photograph (2003.26.293)
1933,
George Phillos Photograph Collection



Photograph (2003.26.294)
1933,
George Phillos Photograph Collection



Photograph (2003.26.295)
1933,
George Phillos Photograph Collection



Photograph (2003.26.296)
1933,
George Phillos Photograph Collection



Postcard (2003.26.48)
1930s, 1930s
George Phillos Photograph Collection



Postcard (2003.26.49)
1930s, 1930s
George Phillos Photograph Collection



Postcard (2003.26.50)
1930s, 1930s
George Phillos Photograph Collection



Postcard (2003.26.51)
1930s, 1930s
George Phillos Photograph Collection



Postcard (2003.26.52)
1930s, 1930s
George Phillos Photograph Collection



Postcard (2003.26.57)
1930s, 1930s
George Phillos Photograph Collection



Postcard (2003.26.58)
1930s, 1930s
George Phillos Photograph Collection



Postcard (2003.26.59)
1930s
George Phillos Photograph Collection



Postcard (2003.26.60)
1930s, 1930s
George Phillos Photograph Collection



Postcard (2003.26.61)
1930s, 1930s
George Phillos Photograph Collection



Postcard (2003.26.63)
1930s, 1930s
George Phillos Photograph Collection



Postcard (2003.26.64)
1930s, 1930s
George Phillos Photograph Collection



Postcard (2003.26.65)
1930s, 1930s
George Phillos Photograph Collection



Photograph (2003.26.68)
1930s, 1930s
George Phillos Photograph Collection



Postcard (2003.26.69)
1930s, 1930s
George Phillos Photograph Collection



Postcard (2003.26.70)
1930s, 1930s
George Phillos Photograph Collection



Postcard (2003.26.71)
1930s, 1930s
George Phillos Photograph Collection



Postcard (2003.26.72)
1930s
George Phillos Photograph Collection



Postcard (2003.26.73)
1930s, 1930s
George Phillos Photograph Collection



Postcard (2003.26.74)
1930s
George Phillos Photograph Collection



Postcard (2003.26.80)
1930s, 1930s
George Phillos Photograph Collection



Postcard (2003.26.83)
circa 1910 - 1939, 1910 - 1939
George Phillos Photograph Collection



Postcard (2003.26.85)
1930s, 1930s
George Phillos Photograph Collection



Postcard (2003.26.86)
1930s, 1930s
George Phillos Photograph Collection



Postcard (2003.26.87)
1930s, 1930s
George Phillos Photograph Collection



Postcard (2003.26.88)
1930s, 1930s
George Phillos Photograph Collection



Postcard (2003.26.89)
1930s, 1930s
George Phillos Photograph Collection



Postcard (2003.26.90)
1930s
George Phillos Photograph Collection



Postcard (2003.26.91)
1930s, 1930s
George Phillos Photograph Collection



Postcard (2003.26.92)
1930s, 1930s
George Phillos Photograph Collection



Postcard (2003.26.93)
1930s
George Phillos Photograph Collection



Postcard (2003.26.94)
1930s, 1930s
George Phillos Photograph Collection



Postcard (2003.26.95)
1930s, 1930s
George Phillos Photograph Collection



Postcard (2003.26.96)
1930s, 1930s
George Phillos Photograph Collection



Photograph (2003.26.97)
1930s, 1930s
George Phillos Photograph Collection



Photograph (2003.26.98)
1930s, 1930s
George Phillos Photograph Collection



Postcard (2003.26.99)
1930s
George Phillos Photograph Collection



Photograph (2003.28.15)
1931
Spanos Family Papers



Photograph (2003.28.16)
June 4 - 7, 1936
Spanos Family Papers



Photograph (2003.31.1)
January 1, 1931
Cynthia's Collection



Card, Souvenir (2003.36.43)
1937,



Certificate, Award (2003.36.46)
May 15, 1931,



Card, Souvenir (2003.36.55.12)
June 6, 1937,



Plate, Decorative (2003.37.11)
1900-2003
JANE SARLAS FONTANA



Certificate, Baptismal (2003.40.8)
December 18, 1938,



Photograph (2003.42.11)
May 1939,



Cross (2003.45.1)
circa 1930,



Jar, Confectionary (2003.5.2)
1924-1954
Alex's Candy Shop



Gown, Wedding (2003.58.10.1)
November 10, 1935,
Pagedas Family Collection



Veil (2003.58.10.2)
September 10, 1935,
Pagedas Family Collection



Veil (2003.58.10.3)
November 10, 1935,
Pagedas Family Collection



Photograph (2003.58.4.1)
November 10, 1935,
Pagedas Family Collection



Photograph (2003.58.4.2)
November 10, 1935,
Pagedas Family Collection



Photograph (2003.58.4.3)
November 10, 1935,
Pagedas Family Collection



Candle (2003.58.7.A)
November 10, 1935,
Pagedas Family Collection



Candle (2003.58.7.B)
November 10, 1935,
Pagedas Family Collection



Stefana (2003.58.8.B)
November 10, 1935,
Pagedas Family Collection



Jacket (2003.58.9.1)
November 10, 1935,
Pagedas Family Collection



Vest (2003.58.9.2)
November 10, 1935,
Pagedas Family Collection



Pants (2003.58.9.3)
November 10, 1935,
Pagedas Family Collection



Certificate, Naturalization (2004.1.3)
May 12, 1930,



Bolt, Cloth (2004.4.1)
circa 1930,



Bolt, Cloth (2004.4.2)
circa 1930,



Photograph (2004.5.26)
1930,



Bib (2004.8.20)
circa 1930,



Romper (2004.8.21.A)
circa 1930,



Belt (2004.8.21.B)
circa 1930,



Blanket (2005.2.2.A)
1897, 1883 – 1930
Judith's Collection



Blanket (2005.2.2.B)
circa 1897, 1883 – 1930
Judith's Collection



Ricker (2005.30.10)
February 11, 2013, 1900 – 1960
BARBATSULY



Dress (2005.5.1)
1930s,



Apron (2005.5.16)
1930s,



Cap (2005.5.17)
1930s,



Cap (2005.5.18)
1930s,



Pillowcase (2005.5.19)
1930s,



Apron (2005.5.2)
1920 - 1939,



Pillowcase (2005.5.20)
1930s,



Pillowcase (2005.5.21)
circa 1930,



Blanket (2005.5.28)
1930s,



Bib (2005.5.3)
1920 - 1939,



Bib (2005.5.4)
1920-1939,



Bib (2005.5.6)
1920-1939,



Bib (2005.5.7)
circa 1920-1939,



Bib (2005.5.8)
circa 1920-1939,



Bib (2005.5.9)
circa 1920-1939,



Costume (2006.12.1.A)
circa 1930,



Shoe, Tsarouxia (2006.12.1.B)
circa 1930,



Photograph (2006.12.2)
1931,



Photograph (2006.12.5)
circa 1934,



Mill Nut (2006.13.3)
1932 – 1930
Zaverdas Family Collection



Typewriter, Manual (2006.13.8)
1935,



Typewriter, Manual (2006.14.1)
circa 1924, 1924 – 1939



Card, Souvenir (2006.15.10)
April 12, 1938,



Card, Souvenir (2006.15.11)
1939,



Card, Souvenir (2006.15.13)
May 21, 1937,



Card, Souvenir (2006.15.18)
August 24, 1938,



Card, Souvenir (2006.15.19)
January 1, 1934,



Card, Souvenir (2006.15.3)
May 21, 1939,



Card, Souvenir (2006.15.5)
December 25, 1934,



Card, Souvenir (2006.15.6)
May 15, 1936,



Card, Souvenir (2006.15.7)
May 19, 1938,



Card, Souvenir (2006.15.8)
January 1, 1937,



Card, Souvenir (2006.15.9)
January 1, 1938,



Shoe, Tsarouxia (2006.16.5.A)
1937,



Shoe, Tsarouxia (2006.16.5.B)
1937,



Photograph (2006.19.47)
1932,



Photograph (2006.19.48)
1932,



Photograph (2006.19.49)
1932,



Photograph (2006.19.50)
1932,



Cleaver (2006.21.2)
February 27, 2013, 1882 – 1969



Knife, Dinner (2006.22.13.A)
circa 1930,
LOUIS MITCHELL ESTATE



Photograph (2006.24.3)
1939 – 1945



Photograph (2006.39.5)
circa 1931,



Thermometer (2006.40.2)
1880 - 1930
Eleni's Collection



Sash (2006.7.1)
1939,



Photograph (2007.16.27)
1937,



Photograph (2007.16.9)
1938,



Photograph (2007.17.1)
1936,



Photograph (2007.17.14)
March 25, 1935,



Photograph (2007.17.16)
1939,



Photograph (2007.17.20)
1937,



Photograph (2007.17.24)
1931,



Photograph (2007.17.28)
1931,



Photograph (2007.17.35)
June 19, 1930,



Photograph (2007.17.9)
1935,



Drawing (2007.25.1)
1931,



Drawing (2007.25.2)
1930,



Drawing (2007.25.3)
1930



Kandili (2007.27.1)
1900 – 1950
Angela's Collection



Machine, Sewing (2007.29.1)
1917 – 1937
ESTATE OF BERTHA KUNDANIS



Box, Needlework (2007.29.1b)
March 11, 2013, 1917 – 1937
ESTATE OF BERTHA KUNDANIS



Photograph (2007.32.1)
1939 – 1945
Theoney's Collection



Photograph (2007.32.2)
1939 – 1945
Theoney's Collection



Photograph (2007.39.2)
1935,



Photograph (2007.41.11)
1936,



Fabric (2007.43.2)
April 13, 2013, 1930 – 1940



Bedspread (2007.43.3)
April 13, 2013, 1930 – 1940



Bedspread (2007.43.4)
April 13, 2013, 1930 – 1940



Bedspread (2007.43.5)
April 13, 2013, 1930 – 1940



Lamp, Oil (2007.45.1)
1873 – 1940
Angelike's Collection



Bell (2007.45.2)
1875 - 1940
Angelike's Collection



Photograph (2008.10.2)
1930s,



Photograph (2008.10.4)
November 1933,



Photograph (2008.10.5)
1925 - 1935



Photograph (2008.17.1)
1925 - 1935



Photograph (2008.17.11)
1930s



Photograph (2008.17.12)
1939 - 1945
Crystella and Tess's Collection



Photograph (2008.17.18)
1939 - 1945
Crystella and Tess's Collection



Photograph (2008.17.19)
1934,



Photograph (2008.17.2)
1925 - 1935



Photograph (2008.17.3)
1920 - 1930
Crystella and Tess's Collection



Photograph (2008.17.8)
1925 - 1935



Blanket (2008.34.1)
1930s,



Lamp, Oil (2008.34.4)
1900 - 1940
Karahalios's Collection



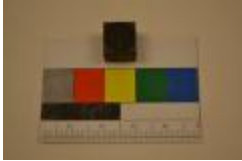
Block, Printing (2008.37.10)
June 1, 1930,
Greek Art Printing Company Artifact Collection



Block, Printing (2008.37.16)
November 12, 1939,
Greek Art Printing Company Artifact Collection



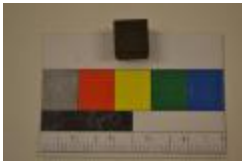
Block, Printing (2008.37.21)
1863 - 1973
Greek Art Printing Company Artifact Collection



Block, Printing (2008.37.24)
1921 - 1936
Greek Art Printing Company Artifact Collection



Block, Printing (2008.37.53)
20th Century
Greek Art Printing Company Artifact Collection



Block, Printing (2008.37.69)
1936,
Greek Art Printing Company Artifact Collection



Knocker, Door (2010.10.2.A)
1890 - 1930
Catherine's Collection



Photograph (2010.13.4)
1930,



Certificate (2010.2.2)
February 26, 1935,



Certificate (2010.2.3)
October 17, 1935,



Photograph (2010.21.1)
July 9, 1939,



Block, Printing (2010.26.10)
1952, 1964 - 1967



Block, Printing (2010.26.14)
1904 - 1967



Block, Printing (2010.26.8)
1904 - 1967



Block, Printing (2010.26.9)
1904 - 1967



Photograph (2010.3.1)
1938



Photograph (2010.6.1)
1931-1932



Photograph (2010.6.2)
1932,



Photograph (2010.6.5)
1935,



Photograph (2010.6.7)
1930,



Photograph (2010.6.8)
1930s,



Photograph (2010.6.9)
1934-1935



Tag, Identification (2010.7.1)
1939 - 1945
Cleo's Collection



Photograph (2010.7.2.a)
1939 - 1944
Cleo's Collection



Photograph (2010.7.2.b)
1939 - 1945
Cleo's Collection



Photograph (2010.7.2.c)
1939 - 1945
Cleo's Collection



Photograph (2010.7.3)
1939 - 1945
Cleo's Collection



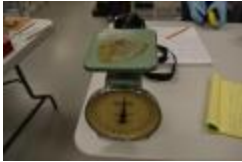
Photograph (2010.7.6)
1939 - 1945
Cleo's Collection



Tablecloth (2011.4.1)
circa 1937,
Paul Kachoris Textile Collection



Photograph (2011.6.169)
1937



Scale, Postal (2011.7.10)
1920 - 1940,
Alex's Candy Shop



Jar, Food storage (2011.7.100)
1920 - 1940,
Alex's Candy Shop



Jar, Food storage (2011.7.101)
1920 - 1940,
Alex's Candy Shop



Jar, Food storage (2011.7.102)
1920 - 1940,
Alex's Candy Shop



Jar, Food storage (2011.7.103)
1920 - 1940,
Alex's Candy Shop



Brush, Shaving (2011.7.104)
1920 - 1940,
Alex's Candy Shop



Pot, Hot water (2011.7.105)
1920 - 1940,
Alex's Candy Shop



Pot, Hot water (2011.7.106)
1920 - 1940,
Alex's Candy Shop



Photograph (2011.7.108)
1920 - 1940,
Alex's Candy Shop



Photograph (2011.7.109)
1920-1940,
Alex's Candy Shop



Photograph (2011.7.113)
1936,
Alex's Candy Shop



Mold, Candy (2011.7.117)
1920-1940,
Alex's Candy Shop



Mold, Candy (2011.7.118)
1920-1940,
Alex's Candy Shop



Mold, Candy (2011.7.119)
1920-1940,
Alex's Candy Shop



Mold, Candy (2011.7.120)
1920-1940,
Alex's Candy Shop



Mold, Candy (2011.7.121)
1920-1940,
Alex's Candy Shop



Mold, Candy (2011.7.122)
1920-1940,
Alex's Candy Shop



Mold, Candy (2011.7.123.A)
1920 - 1940
Alex's Candy Shop



Mold, Candy (2011.7.123.B)
1920 - 1940
Alex's Candy Shop



Mold, Cake (2011.7.124)
1920 - 1940,
Alex's Candy Shop



Mold, Cake (2011.7.125)
1920 - 1940,
Alex's Candy Shop



Mold, Cake (2011.7.126)
1920 - 1940,
Alex's Candy Shop



Mold, Cake (2011.7.127)
1920 - 1940
Alex's Candy Shop



Mold, Cake (2011.7.128)
1920 - 1940
Alex's Candy Shop



Mold, Cake (2011.7.129)
1920 - 1940
Alex's Candy Shop



Cup (2011.7.13)
1930 - 1940,
Alex's Candy Shop



Mold, Cake (2011.7.130)
1920 - 1940
Alex's Candy Shop



Mold, Candy (2011.7.131)
1920 - 1940
Alex's Candy Shop



Mold, Candy (2011.7.132a)
1920 - 1940
Alex's Candy Shop



Mold, Candy (2011.7.132b)
1920 - 1940
Alex's Candy Shop



Mold, Candy (2011.7.133a)
1920 - 1940
Alex's Candy Shop



Mold, Candy (2011.7.133b)
1920 - 1940
Alex's Candy Shop



Mold, Candy (2011.7.134)
1920 - 1940
Alex's Candy Shop



Holder, Thread (2011.7.135)
1920 - 1940
Alex's Candy Shop



Cover, Rolling Pin (2011.7.136)
1920 - 1940
Alex's Candy Shop



Whisk (2011.7.137)
1920-1940
Alex's Candy Shop



Box (2011.7.138)
1920-1940
Alex's Candy Shop



Box (2011.7.139)
1920-1940
Alex's Candy Shop



Pitcher (2011.7.140)
1920-1940
Alex's Candy Shop



Pan, Baking (2011.7.141)
1920-1940
Alex's Candy Shop



Plate (2011.7.142)
1920-1940
Alex's Candy Shop



Dish Soap (2011.7.143)
1920-1940
Alex's Candy Shop



Clock (2011.7.144)
1920-1940
Alex's Candy Shop



Plate (2011.7.145)
1920 - 1940
Alex's Candy Shop



Plate (2011.7.146)
1920 - 1940
Alex's Candy Shop



Plate, Serving (2011.7.147)
1920 - 1940
Alex's Candy Shop



Box, Candy (2011.7.148)
1920 - 1940,
Alex's Candy Shop



Box, Candy (2011.7.149)
1920 - 1940,
Alex's Candy Shop



Box, Candy (2011.7.150)
1920 - 1940,
Alex's Candy Shop



Box, Candy (2011.7.151)
1920 - 1940,
Alex's Candy Shop



Box, Candy (2011.7.152)
1920 - 1940,
Alex's Candy Shop



Box, Candy (2011.7.153)
1920 - 1940,
Alex's Candy Shop



Mold, Candy (2011.7.154)
1920 - 1940,
Alex's Candy Shop



Mold, Candy (2011.7.155)
1920 - 1940,
Alex's Candy Shop



Mold, Candy (2011.7.156)
1920 - 1940,
Alex's Candy Shop



Mold, Candy (2011.7.157)
1920 - 1940,
Alex's Candy Shop



Mold, Candy (2011.7.158)
1920 - 1940,
Alex's Candy Shop



Mold, Candy (2011.7.159)
1920 - 1940,
Alex's Candy Shop



Mold, Candy (2011.7.160)
1920 - 1940,
Alex's Candy Shop



Mold, Candy (2011.7.161)
1920 - 1940
Alex's Candy Shop



Mold, Candy (2011.7.162)
1920 - 1940
Alex's Candy Shop



Mold, Candy (2011.7.163)
1920 - 1940
Alex's Candy Shop



Mold, Candy (2011.7.164)
1920 - 1940
Alex's Candy Shop



Mold, Candy (2011.7.165)
1920 - 1940
Alex's Candy Shop



Mortar, (2011.7.166A)
1920 - 1940
Alex's Candy Shop



Pestle (2011.7.166B)
1920 - 1940
Alex's Candy Shop



Bowl (2011.7.167)
1920 - 1940, 1920 - 1940
Alex's Candy Shop



Bowl (2011.7.168)
1920 - 1940
Alex's Candy Shop



Bowl (2011.7.169)
1920 - 1940
Alex's Candy Shop



Dish (2011.7.170)
1920 - 1940
Alex's Candy Shop



Dish (2011.7.171)
1920 - 1940
Alex's Candy Shop



Dish (2011.7.172)
1920 - 1940
Alex's Candy Shop



Dish (2011.7.173)
1920 - 1940
Alex's Candy Shop



Dish (2011.7.174)
1920 - 1940
Alex's Candy Shop



Dish (2011.7.175)
1920 - 1940
Alex's Candy Shop



Dish (2011.7.176)
1920 - 1940
Alex's Candy Shop



Dish (2011.7.177)
1920 - 1940
Alex's Candy Shop



Dish (2011.7.178)
1920 - 1940
Alex's Candy Shop



Dish (2011.7.179)
1920 - 1930
Alex's Candy Shop



Cup (2011.7.18)
1920 - 1940,
Alex's Candy Shop



Dish (2011.7.180)
1920 - 1940
Alex's Candy Shop



Dish (2011.7.181)
1920 - 1940
Alex's Candy Shop



Dish (2011.7.182)
1920 - 1940
Alex's Candy Shop



Dish (2011.7.183)
1920 - 1940
Alex's Candy Shop



Server, Ice-cream (2011.7.184)
circa 1936,
Alex's Candy Shop



Plaque (2011.7.187)
1920 - 1940,
Alex's Candy Shop



Contract (2011.7.188)
1920 - 1940,
Alex's Candy Shop



Photograph (2011.7.189)
1920 - 1940,
Alex's Candy Shop



Gumball Machine (2011.7.19)
1920 - 1940,
Alex's Candy Shop



Photograph (2011.7.190)
1920 - 1940,
Alex's Candy Shop



Advertisement (2011.7.191)
1920 - 1940,
Alex's Candy Shop



Soap (2011.7.192)
1920 - 1940,
Alex's Candy Shop



Box, Cigarette (2011.7.193)
1920 - 1940,
Alex's Candy Shop



Stick, Mixing (2011.7.194)
1920 - 1940
Alex's Candy Shop



Spoon (2011.7.195)
1920 - 1940
Alex's Candy Shop



Pick, Ice (2011.7.196)
1920 - 1940
Alex's Candy Shop



Scoop, Ice-cream (2011.7.197)
1920 - 1940
Alex's Candy Shop



Scoop, Ice-cream (2011.7.198)
1920 - 1940
Alex's Candy Shop



Corkscrew (2011.7.199)
1920 - 1940
Alex's Candy Shop



Cup (2011.7.2)
1930 - 1940,
Alex's Candy Shop



Candy Mold (2011.7.20)
1920 - 1940,
Alex's Candy Shop



Grinder, Meat (2011.7.200)
1920 - 1940,
Alex's Candy Shop



Set, Salt & Pepper (2011.7.201)
1920 - 1940
Alex's Candy Shop



Set, Salt & Pepper (2011.7.202)
1920 - 1940
Alex's Candy Shop



Set, Salt & Pepper (2011.7.203)
1920 - 1940
Alex's Candy Shop



Set, Salt & Pepper (2011.7.204)
1920 - 1940
Alex's Candy Shop



Set, Salt & Pepper (2011.7.205)
1920 - 1940
Alex's Candy Shop



Opener, Bottle (2011.7.206)
1920 - 1940
Alex's Candy Shop



Opener, Bottle (2011.7.207)
1920 - 1930
Alex's Candy Shop



Bottle, Medicine (2011.7.208)
1930s,
Alex's Candy Shop



Pan, Baking (2011.7.209)
1920 - 1940,
Alex's Candy Shop



Candy Mold (2011.7.21)
1920 - 1940,
Alex's Candy Shop



Dish, Sauce (2011.7.210)
1920 - 1940,
Alex's Candy Shop



Saucepan (2011.7.211)
1920 - 1940,
Alex's Candy Shop



Stand, Book (2011.7.212)
1920 - 1940,
Alex's Candy Shop



Stand, Book (2011.7.213)
1920 - 1940,
Alex's Candy Shop



Stand, Book (2011.7.214)
1920 - 1940,
Alex's Candy Shop



Stand, Book (2011.7.215)
1920 - 1940
Alex's Candy Shop



Box, Food Storage (2011.7.217)
1920 - 1940
Alex's Candy Shop



Box, Food Storage (2011.7.218)
1920 - 1940
Alex's Candy Shop



Menu (2011.7.219)
1920 - 1940
Alex's Candy Shop



Box, Candy (2011.7.22)
1920 - 1940
Alex's Candy Shop



Bill of sale (2011.7.222)
1920 - 1940
Alex's Candy Shop



Advertisement (2011.7.224)
1930,
Alex's Candy Shop



Box, Candy (2011.7.225)
1920 - 1940
Alex's Candy Shop



Negative Film (2011.7.228)
1920 - 1940
Alex's Candy Shop



Box, Food Storage (2011.7.229.A)
1920 - 1940
Alex's Candy Shop



Box, Food Storage (2011.7.229.B)
1920 - 1940
Alex's Candy Shop



Box, Food Storage (2011.7.229.C)
1920 - 1940
Alex's Candy Shop



Box, Food Storage (2011.7.229.D)
1920 - 1940,
Alex's Candy Shop



Box, Food Storage (2011.7.229.E)
1920 - 1940,
Alex's Candy Shop



Box, Food Storage (2011.7.229.F)
1920 - 1940,
Alex's Candy Shop



Box, Food Storage (2011.7.229.G)
1920 - 1940,
Alex's Candy Shop



Box, Food Storage (2011.7.229.H)
1920 - 1940,
Alex's Candy Shop



Box, Food Storage (2011.7.229.I)
1920 - 1940,
Alex's Candy Shop



Box, Food Storage (2011.7.229.J)
1920 - 1940,
Alex's Candy Shop



Box, Food Storage (2011.7.229.K)
1920 - 1940,
Alex's Candy Shop



Box, Food Storage (2011.7.229.L)
1920 - 1940,
Alex's Candy Shop



Box, Food Storage (2011.7.229.M)
1920 – 1940,
Alex's Candy Shop



Box, Food Storage (2011.7.229.N)
1920 – 1940,
Alex's Candy Shop



Box, Food Storage (2011.7.229.O)
1920 – 1940,
Alex's Candy Shop



Box, Food Storage (2011.7.229.P)
1920 – 1940,
Alex's Candy Shop



Box, Food Storage (2011.7.229.Q)
1920 – 1940,
Alex's Candy Shop



Box, Food Storage (2011.7.229.R)
1920 – 1940,
Alex's Candy Shop



Box, Food Storage (2011.7.229.S)
1920 - 1940,
Alex's Candy Shop



Box, Food Storage (2011.7.229.T)
1920 - 1940,
Alex's Candy Shop



Box, Food Storage (2011.7.229.U)
1920 - 1940,
Alex's Candy Shop



Box, Food Storage (2011.7.229.V)
1920 - 1940,
Alex's Candy Shop



Box, Food Storage (2011.7.229.W)
1920 - 1940,
Alex's Candy Shop



Box, Food Storage (2011.7.229.X)
1920 - 1940,
Alex's Candy Shop



Box, Food Storage (2011.7.229.Y)
1920 - 1940,
Alex's Candy Shop



Box, Candy (2011.7.23)
1920 - 1940,
Alex's Candy Shop



Box, Food Storage (2011.7.230.A)
1920 - 1940,
Alex's Candy Shop



Box, Food Storage (2011.7.230.B)
1920 - 1940,
Alex's Candy Shop



Box, Food Storage (2011.7.230.C)
1920 - 1940,
Alex's Candy Shop



Box, Food Storage (2011.7.230.D)
1920 - 1940,
Alex's Candy Shop



Box, Food Storage (2011.7.230.E)
1920 - 1940,
Alex's Candy Shop



Box, Food Storage (2011.7.230.F)
1920 - 1940,
Alex's Candy Shop



Box, Food Storage (2011.7.230.G)
1920 - 1940,
Alex's Candy Shop



Box, Food Storage (2011.7.230.H)
1920 - 1940,
Alex's Candy Shop



Box, Food Storage (2011.7.230.I)
1920 - 1940,
Alex's Candy Shop



Box, Food Storage (2011.7.230.J)
1920 - 1940,
Alex's Candy Shop



Box, Food Storage (2011.7.231.A)
1920 - 1940
Alex's Candy Shop



Box, Food Storage (2011.7.231.B)
1920 - 1940
Alex's Candy Shop



Box, Food Storage (2011.7.232)
1920 - 1940
Alex's Candy Shop



Bag, Pastry (2011.7.233)
1920 - 1940
Alex's Candy Shop



Bag, Pastry (2011.7.234)
1920 - 1940
Alex's Candy Shop



Bag, Pastry (2011.7.235)
1920 - 1940
Alex's Candy Shop



Piece, Display (2011.7.236)
1920 - 1940
Alex's Candy Shop



Piece, Display (2011.7.237)
1920 - 1940,
Alex's Candy Shop



Sign, Trade (2011.7.238)
1920 - 1940,
Alex's Candy Shop



Brick (2011.7.239)
1920 - 1940,
Alex's Candy Shop



Box, Candy (2011.7.24)
1920 - 1940,
Alex's Candy Shop



Brick (2011.7.240)
1920 - 1940,
Alex's Candy Shop



Brick (2011.7.241)
1920 - 1940,
Alex's Candy Shop



Brick (2011.7.242)
1920 - 1940,
Alex's Candy Shop



Brick (2011.7.243)
1920 - 1940,
Alex's Candy Shop



Brick (2011.7.244)
1920 - 1940,
Alex's Candy Shop



Brick (2011.7.245)
1920 - 1940,
Alex's Candy Shop



Brick (2011.7.246)
1920 - 1940,
Alex's Candy Shop



Card, Business (2011.7.247)
1920 - 1940,
Alex's Candy Shop



Card, Business (2011.7.248)
1920 - 1940,
Alex's Candy Shop



Card, Admittance (2011.7.249)
1920 - 1940,
Alex's Candy Shop



Box, Candy (2011.7.25)
1920 - 1940,
Alex's Candy Shop



Bag, Money (2011.7.250)
1920 - 1940,
Alex's Candy Shop



Booklet (2011.7.251)
1920 - 1940,
Alex's Candy Shop



Envelope (2011.7.252)
1920 - 1940,
Alex's Candy Shop



Key (2011.7.253)
1920 - 1940,
Alex's Candy Shop



Key (2011.7.254)
1920 - 1940,
Alex's Candy Shop



Book, Address (2011.7.256)
1920 - 1940,
Alex's Candy Shop



Menu (2011.7.257)
1920 - 1940,
Alex's Candy Shop



Menu (2011.7.258)
1920 - 1940,
Alex's Candy Shop



Picture (2011.7.259)
1920 - 1940,
Alex's Candy Shop



Paper Dispenser (2011.7.26)
1920-1940
Alex's Candy Shop



Picture (2011.7.260)
1920-1940
Alex's Candy Shop



Notebook (2011.7.261)
1920-1940
Alex's Candy Shop



Book, Account (2011.7.262)
1920-1940
Alex's Candy Shop



Book, Account (2011.7.263)
1920-1940
Alex's Candy Shop



Watch, Pocket (2011.7.264a)
1920-1940
Alex's Candy Shop



Invoice (2011.7.264b)
1920-1940
Alex's Candy Shop



Ring (2011.7.265)
1920 – 1940,
Alex's Candy Shop



Razor (2011.7.266)
1920 – 1940,
Alex's Candy Shop



Box Candy (2011.7.268)
1920 – 1940,
Alex's Candy Shop



Wrapper (2011.7.269)
1920 – 1940,
Alex's Candy Shop



Wax Paper Roll (2011.7.27)
1920 – 1940,
Alex's Candy Shop



Table (2011.7.270)
1920 – 1940,
Alex's Candy Shop



Windowpane (2011.7.271)
1920 – 1940,
Alex's Candy Shop



Windowpane (2011.7.272)
1920 – 1940,
Alex's Candy Shop



Box, Food Storage (2011.7.274.A)
1920 - 1940,
Alex's Candy Shop



Box, Food Storage (2011.7.274.B)
1920 - 1940,
Alex's Candy Shop



Box, Food Storage (2011.7.274.C)
1920 - 1940,
Alex's Candy Shop



Box, Food Storage (2011.7.274.D)
1920 - 1940,
Alex's Candy Shop



Box, Food Storage (2011.7.274.E)
1920 - 1940,
Alex's Candy Shop



Box, Food Storage (2011.7.274.F)
1920 - 1940,
Alex's Candy Shop



Box, Food Storage (2011.7.274.G)
1920 – 1940,
Alex's Candy Shop



Box, Food Storage (2011.7.274.H)
1920 – 1940,
Alex's Candy Shop



Box, Food Storage (2011.7.274.I)
1920 – 1940,
Alex's Candy Shop



Box, Food Storage (2011.7.274.J)
1920 – 1940,
Alex's Candy Shop



Box, Food Storage (2011.7.274.K)
1920 – 1940,
Alex's Candy Shop



Box, Food Storage (2011.7.274.L)
1920 – 1940,
Alex's Candy Shop



Box, Food Storage (2011.7.274.M)
1920 - 1940,
Alex's Candy Shop



Box, Food Storage (2011.7.274.N)
1920 - 1940,
Alex's Candy Shop



Box, Food Storage (2011.7.274.O)
1920 - 1940,
Alex's Candy Shop



Box, Food Storage (2011.7.274.P)
1920 - 1940,
Alex's Candy Shop



Box (2011.7.275)
1920 - 1940,
Alex's Candy Shop



Dispenser, Beverage (2011.7.28)
1920 - 1940,
Alex's Candy Shop



Cup (2011.7.3)
1930 - 1940,
Alex's Candy Shop



Pot, Chocolate (2011.7.31)
1890 - 1930,
Alex's Candy Shop



Wax Paper Roll (2011.7.36)
1920 - 1940,
Alex's Candy Shop



Box, Candy (2011.7.37)
1920 - 1940,
Alex's Candy Shop



Box, Candy (2011.7.38)
1920 - 1940,
Alex's Candy Shop



Box, Candy (2011.7.39)
1920 - 1940,
Alex's Candy Shop



Cup (2011.7.4)
1930 - 1940,
Alex's Candy Shop



Box, Candy (2011.7.40)
1920 - 1940,
Alex's Candy Shop



Box, Candy (2011.7.41)
1910 - 1940,
Alex's Candy Shop



Box, Candy (2011.7.42)
1920 - 1940,
Alex's Candy Shop



Box, Candy (2011.7.43)
1920 - 1940,
Alex's Candy Shop



Box, Candy (2011.7.44)
1920 - 1940,
Alex's Candy Shop



Box, Candy (2011.7.46)
1920 - 1940,
Alex's Candy Shop



Box, Candy (2011.7.47)
1920 - 1940,
Alex's Candy Shop



Box, Candy (2011.7.48)
1920 - 1940,
Alex's Candy Shop



Box, Candy (2011.7.49)
1920 - 1940,
Alex's Candy Shop



Cup (2011.7.5)
1930 - 1940,
Alex's Candy Shop



Box Candy (2011.7.50)
1920 - 1940,
Alex's Candy Shop



Box Candy (2011.7.51)
1920 - 1940,
Alex's Candy Shop



Box Candy (2011.7.52)
1920 - 1940,
Alex's Candy Shop



Box Candy (2011.7.53)
1920 - 1940,
Alex's Candy Shop



Box Candy (2011.7.54)
1920 - 1940,
Alex's Candy Shop



Box Candy (2011.7.55)
1920 - 1940,
Alex's Candy Shop



Box Candy (2011.7.56)
1920 - 1940,
Alex's Candy Shop



Box Candy (2011.7.57)
1920 - 1940,
Alex's Candy Shop



Box, Candy (2011.7.58)
1920 - 1940
Alex's Candy Shop



Box, Candy (2011.7.59)
1920 - 1940
Alex's Candy Shop



Box, Candy (2011.7.60)
1920 - 1940
Alex's Candy Shop



Box, Candy (2011.7.61)
1920 - 1940
Alex's Candy Shop



Cup (2011.7.62)
1920 - 1940
Alex's Candy Shop



Cup (2011.7.63)
1920 - 1940
Alex's Candy Shop



Cup (2011.7.64)
1920 - 1940
Alex's Candy Shop



Cup (2011.7.65)
1920 - 1940
Alex's Candy Shop



Cup (2011.7.66)
1920 - 1940
Alex's Candy Shop



Cup (2011.7.67)
1920 - 1940
Alex's Candy Shop



Cup (2011.7.68)
1920 - 1940
Alex's Candy Shop



Cup (2011.7.69)
1920 - 1940
Alex's Candy Shop



Box, Candy (2011.7.7)
1930 - 1940
Alex's Candy Shop



Cup (2011.7.70)
1920 - 1940
Alex's Candy Shop



Cup (2011.7.71)
1920 - 1940
Alex's Candy Shop



Cup (2011.7.72)
1920 - 1940
Alex's Candy Shop



Cup (2011.7.73)
1920 - 1940
Alex's Candy Shop



Cup (2011.7.74)
1920 - 1940
Alex's Candy Shop



Cup (2011.7.75)
1920-1940,
Alex's Candy Shop



Dish_Ice Cream (2011.7.76)
1920-1940
Alex's Candy Shop



Dish_Ice Cream (2011.7.77)
1920-1940
Alex's Candy Shop



Dish_Ice Cream (2011.7.78)
1920-1940
Alex's Candy Shop



Dish_Ice Cream (2011.7.79)
1920-1940,
Alex's Candy Shop



Dish_Ice Cream (2011.7.80)
1920-1940
Alex's Candy Shop



Dish_Ice Cream (2011.7.81)
1920-1940
Alex's Candy Shop



Dish_Ice Cream (2011.7.82)
1920-1940
Alex's Candy Shop



Dish_Ice Cream (2011.7.83)
1920-1940,
Alex's Candy Shop



Dish_Ice Cream (2011.7.84)
1920-1940,
Alex's Candy Shop



Dish_Ice Cream (2011.7.85)
1920-1940,
Alex's Candy Shop



Dish_Ice Cream (2011.7.86)
1920-1940,
Alex's Candy Shop



Dish_Ice Cream (2011.7.87)
1920-1940,
Alex's Candy Shop



Dish_Dessert (2011.7.88)
1920-1940,
Alex's Candy Shop



Dish_Dessert (2011.7.89)
1920-1940,
Alex's Candy Shop



Dish_Dessert (2011.7.90)
1920-1940,
Alex's Candy Shop



Dish, Dessert (2011.7.91)
1920 - 1940,
Alex's Candy Shop



Dish, Dessert (2011.7.92)
1920 - 1940,
Alex's Candy Shop



Bowl (2011.7.93)
1920 - 1940,
Alex's Candy Shop



Bowl (2011.7.94)
1920 - 1940,
Alex's Candy Shop



Cup, Coffee (2011.7.95)
1920 - 1940,
Alex's Candy Shop



Cup, Coffee (2011.7.96)
1920 - 1940,
Alex's Candy Shop



Cup, Coffee (2011.7.97)
1920 - 1940,
Alex's Candy Shop



Bowl (2011.7.98)
1920 - 1940,
Alex's Candy Shop



Jar, Food storage (2011.7.99)
1920 - 1940
Alex's Candy Shop



Box (2012.12.1)
February 27, 2012, 1904 - 1967
Ting-a-Ling Candies



Rubber Stamp (2012.12.10)
February 27, 2012, 1904 - 1967



Rubber Stamp (2012.12.11)
February 27, 2012, 1904 - 1967



Block, Printing (2012.12.12)
February 27, 2012, 1904 - 1967



Rubber Stamp (2012.12.2)
February 27, 2012, 1904 - 1967



Rubber Stamp (2012.12.3)
February 27, 2012, 1904 - 1967



Rubber Stamp (2012.12.4)
February 27, 2012, 1904 - 1967



Rubber Stamp (2012.12.5)
February 27, 2012, 1904 - 1967



Rubber Stamp (2012.12.6)
February 27, 2012, 1904 - 1967



Rubber Stamp (2012.12.7)
February 27, 2012, 1904 - 1967



Rubber Stamp (2012.12.8)
February 27, 2012, 1904 - 1967



Rubber Stamp (2012.12.9)
February 27, 2012, 1904 - 1967



Thimble (2012.13.1)
1904 - 1967



Thimble (2012.13.2)
1904 - 1967



Thimble (2012.13.3)
1904 - 1967



Photograph (2012.14.10)
March 14, 1937



Doily (2012.33.2)
1930s,



Doily (2012.33.3)
1930s,



Doily (2012.33.4)
1930s,



Doily (2012.33.5)
1930s,



Doily (2012.33.6)
1930s,



Picture, Needlework (2012.33.7)
1930s,



Picture, Needlework (2012.33.8)
1930s,



Picture, Needlework (2012.33.9)
1930s,



Photograph (2012.40.11)
1937,



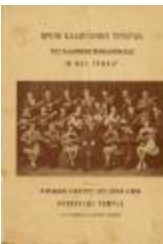
Photograph (2012.5.2)
1930,
Mary Psychogios



Menu, Restaurant (2012.7.5)
circa 1930
Gayety's Chocolates



Frame, Picture (2012.8.1)
February 27, 2012, 1904 – 1967



Program, Concert (2012.9.7)
1937,
Spiros Sافرithis Collection



Doily (2013.1.100)
January 25, 2013, 1930 – 1960
Celia's Textile Collection



Handkerchief (2013.1.101)
January 25, 2013, 1930 – 1960
Celia's Textile Collection



Handkerchief (2013.1.102)
January 25, 2013, 1930 – 1960
Celia's Textile Collection



Handkerchief (2013.1.103)
January 25, 2013, 1930 – 1960
Celia's Textile Collection



Doily (2013.1.104)
January 25, 2013, 1930 – 1960
Celia's Textile Collection



Doily (2013.1.105)
January 25, 2013, 1930 – 1960
Celia's Textile Collection



Doily (2013.1.106)
January 25, 2013, 1930 – 1960
Celia's Textile Collection



Doily (2013.1.107)
January 25, 2013, 1930 – 1960
Celia's Textile Collection



Doily (2013.1.108)
January 25, 2013, 1930 – 1960
Celia's Textile Collection



Doily (2013.1.109)
January 25, 2013, 1930 – 1960
Celia's Textile Collection



Doily (2013.1.110)
January 25, 2013, 1930 – 1960
Celia's Textile Collection



Doily (2013.1.111)
January 25, 2013, 1930 – 1960
Celia's Textile Collection



Doily (2013.1.112)
January 25, 2013, 1930 – 1960
Celia's Textile Collection



Doily (2013.1.113)
January 25, 2013, 1930 – 1960
Celia's Textile Collection



Doily (2013.1.114)
January 25, 2013, 1930 – 1960
Celia's Textile Collection



Doily (2013.1.115)
January 25, 2013, 1930 – 1960
Celia's Textile Collection



Doily (2013.1.116)
January 25, 2013, 1930 – 1960
Celia's Textile Collection



Doily (2013.1.117)
January 25, 2013, 1930 – 1960
Celia's Textile Collection



Doily (2013.1.118)
January 25, 2013, 1930 – 1960
Celia's Textile Collection



Doily (2013.1.119)
January 25, 2013, 1930 – 1960
Celia's Textile Collection



Doily (2013.1.120)
January 25, 2013, 1930 – 1960
Celia's Textile Collection



Doily (2013.1.121)
January 25, 2013, 1930 – 1960
Celia's Textile Collection



Doily (2013.1.122)
January 25, 2013, 1930 – 1960
Celia's Textile Collection



Doily (2013.1.123)
January 25, 2013, 1930 – 1960
Celia's Textile Collection



Doily (2013.1.124)
January 25, 2013, 1930 – 1960
Celia's Textile Collection



Doily (2013.1.125)
January 25, 2013, 1930 – 1960
Celia's Textile Collection



Doily (2013.1.126)
January 25, 2013, 1930 – 1960
Celia's Textile Collection



Doily (2013.1.127)
January 25, 2013, 1930 – 1960
Celia's Textile Collection



Doily (2013.1.128)
January 25, 2013, 1930 – 1960
Celia's Textile Collection



Doily (2013.1.129)
January 25, 2013, 1930 – 1960
Celia's Textile Collection



Doily (2013.1.130)
January 25, 2013, 1930 – 1960
Celia's Textile Collection



Doily (2013.1.131)
January 25, 2013, 1930 – 1960
Celia's Textile Collection



Doily (2013.1.132)
January 25, 2013, 1930 – 1960
Celia's Textile Collection



Doily (2013.1.133)
January 25, 2013, 1930 – 1960
Celia's Textile Collection



Doily (2013.1.134)
January 25, 2013, 1930 – 1960
Celia's Textile Collection



Doily (2013.1.135)
January 25, 2013, 1930 – 1960
Celia's Textile Collection



Doily (2013.1.136)
January 25, 2013, 1930 – 1960
Celia's Textile Collection



Doily (2013.1.137)
January 25, 2013, 1930 – 1960
Celia's Textile Collection



Doily (2013.1.138)
January 25, 2013, 1930 – 1960
Celia's Textile Collection



Doily (2013.1.139)
January 25, 2013, 1930 – 1960
Celia's Textile Collection



Doily (2013.1.140)
January 25, 2013, 1930 – 1960
Celia's Textile Collection



Doily (2013.1.141)
January 25, 2013, 1930 – 1960
Celia's Textile Collection



Doily (2013.1.142)
January 25, 2013, 1930 – 1960
Celia's Textile Collection



Doily (2013.1.143)
January 25, 2013, 1930 – 1960
Celia's Textile Collection



Doily (2013.1.144)
January 25, 2013, 1930 – 1960
Celia's Textile Collection



Doily (2013.1.145)
January 25, 2013, 1930 – 1960
Celia's Textile Collection



Doily (2013.1.146)
January 25, 2013, 1930 – 1960
Celia's Textile Collection



Doily (2013.1.147)
January 25, 2013, 1930 – 1960
Celia's Textile Collection



Doily (2013.1.148)
January 25, 2013, 1930 – 1960
Celia's Textile Collection



Doily (2013.1.149)
January 25, 2013, 1930 – 1960
Celia's Textile Collection



Doily (2013.1.150)
January 25, 2013, 1930 – 1960
Celia's Textile Collection



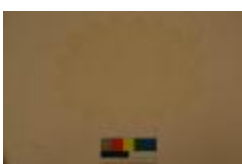
Doily (2013.1.151)
January 25, 2013, 1930 – 1960
Celia's Textile Collection



Doily (2013.1.152)
January 25, 2013, 1930 – 1960
Celia's Textile Collection



Doily (2013.1.153)
January 25, 2013, 1930 – 1960
Celia's Textile Collection



Doily (2013.1.154)
January 25, 2013, 1930 – 1960
Celia's Textile Collection



Doily (2013.1.155)
January 28, 2013, 1930 – 1960
Celia's Textile Collection



Doily (2013.1.156)
January 28, 2013, 1930 – 1960
Celia's Textile Collection



Doily (2013.1.157)
January 28, 2013, 1930 – 1960
Celia's Textile Collection



Doily (2013.1.158)
January 28, 2013, 1930 – 1960
Celia's Textile Collection



Doily (2013.1.159)
January 28, 2013, 1930 – 1960
Celia's Textile Collection



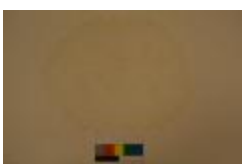
Doily (2013.1.160)
January 28, 2013, 1930 – 1960
Celia's Textile Collection



Doily (2013.1.161)
January 28, 2013, 1930 – 1960
Celia's Textile Collection



Doily (2013.1.162)
January 28, 2013, 1930 – 1960
Celia's Textile Collection



Doily (2013.1.163)
January 28, 2013, 1930 – 1960
Celia's Textile Collection



Doily (2013.1.164)
January 28, 2013, 1930 – 1960
Celia's Textile Collection



Doily (2013.1.165)
January 28, 2013, 1930 – 1960
Celia's Textile Collection



Doily (2013.1.166)
January 28, 2013, 1930 – 1960
Celia's Textile Collection



Doily (2013.1.167)
January 28, 2013, 1930 – 1960
Celia's Textile Collection



Doily (2013.1.168)
January 28, 2013, 1930 – 1960
Celia's Textile Collection



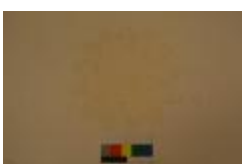
Doily (2013.1.169)
January 28, 2013, 1930 – 1960
Celia's Textile Collection



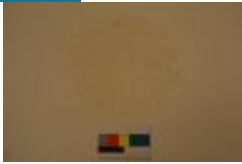
Doily (2013.1.170)
January 28, 2013, 1930 – 1960
Celia's Textile Collection



Doily (2013.1.171)
January 28, 2013, 1930 – 1960
Celia's Textile Collection



Doily (2013.1.172)
January 28, 2013, 1930 – 1960
Celia's Textile Collection



Doily (2013.1.173)
January 28, 2013, 1930 – 1960
Celia's Textile Collection



Doily (2013.1.174)
January 28, 2013, 1930 – 1960
Celia's Textile Collection



Doily (2013.1.175)
January 28, 2013, 1930 – 1960
Celia's Textile Collection



Doily (2013.1.176)
January 28, 2013, 1930 – 1960
Celia's Textile Collection



Doily (2013.1.177)
January 28, 2013, 1930 – 1960
Celia's Textile Collection



Doily (2013.1.178)
January 28, 2013, 1930 – 1960
Celia's Textile Collection



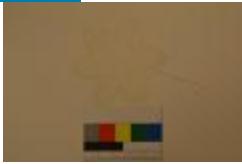
Doily (2013.1.179)
January 28, 2013, 1930 – 1960
Celia's Textile Collection



Doily (2013.1.180)
January 28, 2013, 1930 – 1960
Celia's Textile Collection



Doily (2013.1.181)
January 28, 2013, 1930 – 1960
Celia's Textile Collection



Doily (2013.1.182)
January 28, 2013, 1930 – 1960
Celia's Textile Collection



Doily (2013.1.183)
January 28, 2013, 1930 – 1960
Celia's Textile Collection



Doily (2013.1.184)
January 28, 2013, 1930 – 1960
Celia's Textile Collection



Doily (2013.1.185)
January 28, 2013, 1930 – 1960
Celia's Textile Collection



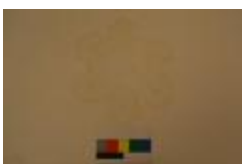
Doily (2013.1.186)
January 28, 2013, 1930 – 1960
Celia's Textile Collection



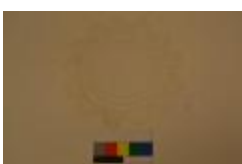
Doily (2013.1.187)
1930 – 1960
Celia's Textile Collection



Doily (2013.1.188)
January 28, 2013, 1930 – 1960
Celia's Textile Collection



Doily (2013.1.189)
January 28, 2013, 1930 – 1960
Celia's Textile Collection



Doily (2013.1.190)
January 28, 2013, 1930 – 1960
Celia's Textile Collection



Doily (2013.1.191)
January 28, 2013, 1930 – 1960
Celia's Textile Collection



Doily (2013.1.192)
January 28, 2013, 1930 – 1960
Celia's Textile Collection



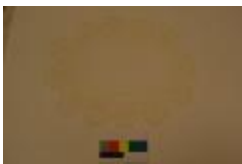
Doily (2013.1.193)
January 28, 2013, 1930 – 1960
Celia's Textile Collection



Doily (2013.1.194)
January 28, 2013, 1930 – 1960
Celia's Textile Collection



Doily (2013.1.195)
January 28, 2013, 1930 – 1960
Celia's Textile Collection



Doily (2013.1.196)
January 28, 2013, 1930 – 1960
Celia's Textile Collection



Doily (2013.1.197)
January 28, 2013, 1930 – 1960
Celia's Textile Collection



Doily (2013.1.198)
January 28, 2013, 1930 – 1960
Celia's Textile Collection



Doily (2013.1.199)
1930 – 1960
Celia's Textile Collection



Doily (2013.1.200)
January 28, 2013, 1930 – 1960
Celia's Textile Collection



Doily (2013.1.201)
January 28, 2013, 1930 – 1960
Celia's Textile Collection



Doily (2013.1.202)
January 28, 2013, 1930 – 1960
Celia's Textile Collection



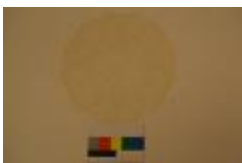
Doily (2013.1.203)
January 28, 2013, 1930 – 1960
Celia's Textile Collection



Doily (2013.1.204)
January 28, 2013, 1930 – 1960
Celia's Textile Collection



Doily (2013.1.205)
January 28, 2013, 1930 – 1960
Celia's Textile Collection



Doily (2013.1.206)
January 28, 2013, 1930 – 1960
Celia's Textile Collection



Doily (2013.1.207)
January 28, 2013, 1930 – 1960
Celia's Textile Collection



Doily (2013.1.208)
January 28, 2013, 1930 – 1960
Celia's Textile Collection



Doily (2013.1.209)
January 28, 2013, 1930 – 1960
Celia's Textile Collection



Doily (2013.1.210)
January 28, 2013, 1930 – 1960
Celia's Textile Collection



Doily (2013.1.211)
January 28, 2013, 1930 – 1960
Celia's Textile Collection



Doily (2013.1.212)
January 28, 2013, 1930 – 1960
Celia's Textile Collection



Doily (2013.1.213)
January 28, 2013, 1930 – 1960
Celia's Textile Collection



Doily (2013.1.214)
January 28, 2013, 1930 – 1960
Celia's Textile Collection



Doily (2013.1.215)
January 28, 2013, 1930 – 1960
Celia's Textile Collection



Doily (2013.1.216)
January 28, 2013, 1930 – 1960
Celia's Textile Collection



Doily (2013.1.217)
January 28, 2013, 1930 – 1960
Celia's Textile Collection



Doily (2013.1.218)
January 28, 2013, 1930 – 1960
Celia's Textile Collection



Doily (2013.1.219)
January 28, 2013, 1930 – 1960
Celia's Textile Collection



Doily (2013.1.220)
January 28, 2013, 1930 – 1960
Celia's Textile Collection



Doily (2013.1.221)
January 28, 2013, 1930 – 1960
Celia's Textile Collection



Doily (2013.1.222)
January 28, 2013, 1930 – 1960
Celia's Textile Collection



Doily (2013.1.223)
January 28, 2013, 1930 – 1960
Celia's Textile Collection



Doily (2013.1.224)
January 28, 2013, 1930 – 1960
Celia's Textile Collection



Doily (2013.1.225)
1930 – 1960
Celia's Textile Collection



Doily (2013.1.226)
January 28, 2013, 1930 – 1960
Celia's Textile Collection



Doily (2013.1.227)
January 28, 2013, 1930 – 1960
Celia's Textile Collection



Towel, Show (2013.1.228)
January 28, 2013, 1930 – 1960
Celia's Textile Collection



Doily (2013.1.229)
January 28, 2013, 1930 – 1960
Celia's Textile Collection



Doily (2013.1.230)
January 28, 2013, 1930 – 1960
Celia's Textile Collection



Doily (2013.1.231)
January 28, 2013, 1930 – 1960
Celia's Textile Collection



Doily (2013.1.232)
January 28, 2013, 1930 – 1960
Celia's Textile Collection



Doily (2013.1.233)
January 28, 2013, 1930 – 1960
Celia's Textile Collection

Sheet (2013.1.234)
January 28, 2013, 1930 – 1960
Celia's Textile Collection

Doily (2013.1.235)
January 28, 2013, 1930 – 2000
Celia's Textile Collection

Doily (2013.1.236)
January 28, 2013, 1930 – 2000
Celia's Textile Collection

Doily (2013.1.237)
January 28, 2013, 1930 – 2000
Celia's Textile Collection

Doily (2013.1.238)
January 28, 2013, 1930 – 2000
Celia's Textile Collection

Pillowcase (2013.1.239)
January 28, 2013, 1930 – 2000
Celia's Textile Collection

Pillowcase (2013.1.240)
January 28, 2013, 1930 – 2000
Celia's Textile Collection

Doily (2013.1.241)
January 30, 2013, 1930 – 2000
Celia's Textile Collection

Doily (2013.1.243)
January 30, 2013, 1930 – 2000
Celia's Textile Collection

Doily (2013.1.244)
January 30, 2013, 1930 – 2000
Celia's Textile Collection

Doily (2013.1.245)
January 30, 2013, 1930 – 2000
Celia's Textile Collection

Doily (2013.1.246)
1930s
Celia's Textile Collection

Doily (2013.1.247)
January 30, 2013, 1930 – 2000
Celia's Textile Collection

Pillowcase (2013.1.248)
January 30, 2013, 1930 – 2000
Celia's Textile Collection

Doily (2013.1.249)
January 30, 2013, 1930 – 2000
Celia's Textile Collection

Doily (2013.1.250)
January 30, 2013, 1930 – 2000
Celia's Textile Collection

Doily (2013.1.251)
January 30, 2013, 1930 – 2000
Celia's Textile Collection

Doily (2013.1.252)
January 30, 2013, 1930 – 2000
Celia's Textile Collection

Doily (2013.1.253)
January 30, 2013, 1930 – 2000
Celia's Textile Collection

Doily (2013.1.254)
January 30, 2013, 1930 – 2000
Celia's Textile Collection

Doily (2013.1.255)
1930 – 2000
Celia's Textile Collection

Doily (2013.1.256)
January 30, 2013, 1930 – 2000
Celia's Textile Collection

Doily (2013.1.257)
January 30, 2013, 1930 – 2000
Celia's Textile Collection

Doily (2013.1.258)
January 30, 2013, 1930 – 2000
Celia's Textile Collection

Doily (2013.1.259)
January 30, 2013, 1930 – 2000
Celia's Textile Collection

Doily (2013.1.260)
January 30, 2013, 1930 – 2000
Celia's Textile Collection

Doily (2013.1.261)
January 30, 2013, 1930 – 2000
Celia's Textile Collection

Doily (2013.1.262)
January 30, 2013, 1930 – 2000
Celia's Textile Collection

Doily (2013.1.263)
January 30, 2013, 1930 – 2000
Celia's Textile Collection

Doily (2013.1.264)
January 30, 2013, 1930 – 2000
Celia's Textile Collection

Doily (2013.1.265)
January 30, 2013, 1930 – 2000
Celia's Textile Collection

Doily (2013.1.266)
January 30, 2013, 1930 – 2000
Celia's Textile Collection

Doily (2013.1.267)
January 30, 2013, 1930 – 2000
Celia's Textile Collection

Doily (2013.1.268)
January 30, 2013, 1930 – 2000
Celia's Textile Collection

Doily (2013.1.269)
January 28, 2013, 1930 – 2000
Celia's Textile Collection

Doily (2013.1.270)
January 28, 2013, 1930 – 2000
Celia's Textile Collection

Doily (2013.1.271)
January 28, 2013, 1930 – 2000
Celia's Textile Collection

Doily (2013.1.272)
January 28, 2013, 1930 – 2000
Celia's Textile Collection

□ **Doily (2013.1.273)**
January 28, 2013, 1930 – 2000
Celia's Textile Collection

□ **Doily (2013.1.274)**
January 28, 2013, 1930 – 2000
Celia's Textile Collection

□ **Doily (2013.1.275)**
January 28, 2013, 1930 – 2000
Celia's Textile Collection

□ **Doily (2013.1.276)**
January 28, 2013, 1930 – 2000
Celia's Textile Collection

□ **Doily (2013.1.277)**
January 28, 2013, 1930 – 2000
Celia's Textile Collection

□ **Doily (2013.1.278)**
January 28, 2013, 1930 – 2000
Celia's Textile Collection

□ **Doily (2013.1.279)**
January 28, 2013, 1930 – 2000
Celia's Textile Collection

□ **Pillowcase (2013.1.280)**
January 28, 2013, 1930 – 2000
Celia's Textile Collection

□ **Pillowcase (2013.1.281)**
January 28, 2013, 1930 – 2000
Celia's Textile Collection

□ **Tablecloth (2013.1.282)**
January 28, 2013, 1930 – 2000
Celia's Textile Collection

□ **Tablecloth (2013.1.283)**
January 28, 2013, 1930 – 2000
Celia's Textile Collection

□ **Runner, Table (2013.1.284)**
January 28, 2013, 1930 – 2000
Celia's Textile Collection

□ **Doily (2013.1.96)**
January 23, 2013, 1930 – 1960
Celia's Textile Collection

□ **Doily (2013.1.97)**
January 23, 2013, 1930 – 1960
Celia's Textile Collection

□ **Doily (2013.1.98)**
January 23, 2013, 1930 – 1960
Celia's Textile Collection

□ **Doily (2013.1.99)**
January 25, 2013, 1930 – 1960
Celia's Textile Collection

□ **Napkin (2013.10.1)**
1903 – 1985
George's Collection

- Napkin (2013.10.2)**
1903 – 1985
George's Collection

- Napkin (2013.10.3)**
1903 – 1985
George's Collection

- Napkin (2013.10.4)**
1903 – 1985
George's Collection

- Napkin (2013.10.5)**
1903 – 1985
George's Collection

- Napkin (2013.10.6)**
1903 – 1985
George's Collection

- Tablecloth (2013.10.7)**
1903 – 1985
George's Collection

- Doily (2013.10.8)**
1903 – 1985
George's Collection

- Doily (2013.10.9)**
1903 – 1985
George's Collection

- Photograph (2013.12.26)**
December 25, 1938,

- Photograph (2013.17.1)**
July 17, 1937

- Pin (2013.2.22)**
January 25, 2013, 1930 – 1980

- Passport (2013.23.1)**
1932 – 1933
Madeline Marines's Objects

- Passport (2013.23.2)**
1931 – 1932
Madeline Marines's Objects

- Photograph (2013.23.4)**
1932,
Madeline Marines's Objects

- Photograph (2013.5.17)**
1931
Pete Poulos

- Photograph (2013.5.18)**
1936,
Pete Poulos

- Pin, Lapel (2013.5.27)**
1939 – 1948
Pete Poulos

- Certificate, Membership (2013.5.28)**
1938,
Pete Poulos

- Paper, Photographic (2013.6.11)**
1934, 1936
The Calas Family Photograph Collection

- Photograph (2013.9.2)**
1925 - 1935
Virginia's Collection

- Coin (2014.1.21)**
1930,

- Coin (2014.1.22)**
1930,

- Coin (2014.1.23)**
1930,

- Coin (2014.1.24)**
1930,

- Coin (2014.1.25)**
1930,

- Pen, Fountain (2014.1.7)**
1930s,

- Pen, Fountain (2014.1.8)**
1930s,

- Wreath, Wedding (2015.12.1)**
June 7, 1931,

- Veil (2015.12.10)**
1931,

- Stocking (2015.12.11)**
1931,

- Stocking (2015.12.12)**
1931,

- Pump (2015.12.13)**
1931,

- Glove (2015.12.14)**
1931,

- Glove (2015.12.15)**
1931,

- Wreath, Wedding (2015.12.2)**
June 7, 1931,

- Gown, Wedding (2015.12.3)**
June 7, 1931

- Nightgown (2015.12.4)**
1931,

- Brooch (2015.12.5)**
June 7, 1931,

- **Ornament, Hair (2015.12.6)**
1931,

- **Ornament, Hair (2015.12.7)**
1931,

- **Tie, Bow (2015.12.8)**
1931,

- **Tie, Bow (2015.12.9)**
1931,

- **Stefana (2015.13.1)**
1938,

- **Pin, Lapel (2015.14.15)**
1939 – 1945
Helias Doundoulakis Collection

- **Button (2015.21.12)**
1939 – 1945

- **Button (2015.21.13)**
1939 – 1945

- **Button (2015.21.14)**
1939 – 1945

- **Button (2015.21.2)**
1939 – 1945

- **Button (2015.21.3)**
1939 – 1945

- **Button (2015.21.4)**
1939 – 1945

- **Button (2015.21.5)**
1939 – 1945

- **Button (2015.21.6)**
1939 – 1945

- **Button (2015.21.7)**
1939 – 1945

- **Photograph (2015.22.10)**
1920 – 1945

- **Photograph (2015.22.11)**
1920 – 1945

- **Photograph (2015.27.2)**
1925 – 1945

- **Photograph (2015.27.3)**
1935 – 1945

- **Mask, Oxygen (2015.4.1)**
1939 – 1945

- **Tube (2015.4.2)**
1939 – 1945

- **Helmet (2015.4.3)**
1939 – 1945

- Headset, Radio (2015.4.4)**
1939 – 1945

- Cap (2015.4.5)**
1939 – 1945

- Photograph (2015.4.6)**
1939 – 1945

- Dress (2015.6.5)**
1934,

- Blanket (2016.1.1)**
1911 – 1954

- Mirror, Hand (2016.11.1)**
1930s,

- Mirror, Hand (2016.11.2)**
1930s,

- Mirror, Hand (2016.11.3)**
1930s,

- Mirror, Hand (2016.11.5)**
1930s,

- Certificate, Marriage (2016.2.1)**
1931
Economou Family Papers (NHM34)

- Telegram (2016.2.10)**
1931
Economou Family Papers (NHM34)

- Telegram (2016.2.11)**
1931
Economou Family Papers (NHM34)

- Telegram (2016.2.12)**
1931
Economou Family Papers (NHM34)

- Telegram (2016.2.13)**
1931
Economou Family Papers (NHM34)

- Certificate, Commemorative (2016.2.14)**
1934
Economou Family Papers (NHM34)

- Bill of Sale (2016.2.15)**
1931
Economou Family Papers (NHM34)

- Envelope (2016.2.22)**
1931
Economou Family Papers (NHM34)

- Photograph (2016.2.23)**
June 7, 1931
Economou Family Papers (NHM34)

- Telegram (2016.2.24)**
1931
Economou Family Papers (NHM34)

□ **Telegram (2016.2.25)**
1931
Economou Family Papers (NHM34)

□ **Telegram (2016.2.26)**
1931
Economou Family Papers (NHM34)

□ **Telegram (2016.2.27)**
1931
Economou Family Papers (NHM34)

□ **Book, Bridal (2016.2.28)**
1931
Economou Family Papers (NHM34)

□ **Certificate, Marriage (2016.2.29)**
1931
Economou Family Papers (NHM34)

□ **Bill of Sale (2016.2.30)**
1931
Economou Family Papers (NHM34)

□ **Photograph (2016.2.4)**
1931
Economou Family Papers (NHM34)

□ **Telegram (2016.2.5)**
1931
Economou Family Papers (NHM34)

□ **Telegram (2016.2.6)**
1931
Economou Family Papers (NHM34)

□ **Telegram (2016.2.7)**
1931
Economou Family Papers (NHM34)

□ **Telegram (2016.2.9)**
1931
Economou Family Papers (NHM34)


□ **Book (2018.17.1)**
1937

□ **Photograph (2019.14.1)**
June 12, 1932
Pagedas Family Collection

□ **Apron (2019.5.1)**
1930s

□ **Bodice (2019.5.3)**
1930s

□ **Scarf (2020.4.3)**
1930s

□ **Photograph (2021.14)**
1930s

- Photograph (2021.2.2)**
April 16, 1937
- Oven, Dutch (2021.21.1A)**
1920 - 1959
- Oven, Dutch (2021.21.1B)**
1920 - 1959
- Kettle (2021.21.2)**
1920 - 1959
- Music, Sheet (2021.26.35)**
1935
- Plaque (2021.5.14)**
April 3, 1939
Mary Kay Karzas Aragon and Trianon Ballroom Collection (NHM49)
- Icon (2021.9)**
1935
- Drawing (2022.16.1)**
1936
Anthony J Mourek collection donated by Despina Kotsapouikis
- Drawing (2022.16.11)**
1930s
Anthony J Mourek collection donated by Despina Kotsapouikis
- Drawing (2022.16.48)**
1937
Anthony J Mourek collection donated by Despina Kotsapouikis
- Drawing (2022.16.49)**
1937
Anthony J Mourek collection donated by Despina Kotsapouikis
- Drawing (2022.16.50)**
1937
Anthony J Mourek collection donated by Despina Kotsapouikis
- Drawing (2022.16.51)**
1937
Anthony J Mourek collection donated by Despina Kotsapouikis
- Drawing (2022.16.53)**
1937
Anthony J Mourek collection donated by Despina Kotsapouikis
- Drawing (2022.16.54)**
1937
Anthony J Mourek collection donated by Despina Kotsapouikis
- Drawing (2022.16.57)**
circa 1937 - 1945
Anthony J Mourek collection donated by Despina Kotsapouikis
- Drawing (2022.16.65)**
1939
Anthony J Mourek collection donated by Despina Kotsapouikis

□ **Drawing (2022.16.66)**
1939
Anthony J Mourek collection donated by Despina Kotsapouikis

□ **Drawing (2022.16.7)**
1937
Anthony J Mourek collection donated by Despina Kotsapouikis

□ **Drawing (2022.16.76)**
1939
Anthony J Mourek collection donated by Despina Kotsapouikis

□ **Drawing (2022.16.77)**
1939
Anthony J Mourek collection donated by Despina Kotsapouikis

□ **Drawing (2022.16.78)**
1939
Anthony J Mourek collection donated by Despina Kotsapouikis

□ **Drawing (2022.16.79)**
1938
Anthony J Mourek collection donated by Despina Kotsapouikis

□ **Drawing (2022.16.81)**
1938
Anthony J Mourek collection donated by Despina Kotsapouikis

□ **Drawing (2022.16.82)**
1938
Anthony J Mourek collection donated by Despina Kotsapouikis

□ **Drawing (2022.16.83)**
1939
Anthony J Mourek collection donated by Despina Kotsapouikis

□ **Drawing (2022.16.84)**
1939
Anthony J Mourek collection donated by Despina Kotsapouikis

□ **Drawing (2022.16.88)**
1939
Anthony J Mourek collection donated by Despina Kotsapouikis

□ **Drawing (2022.16.89)**
1938
Anthony J Mourek collection donated by Despina Kotsapouikis

□ **Drawing (2022.16.90)**
1938
Anthony J Mourek collection donated by Despina Kotsapouikis

□ **Drawing (2022.16.92)**
1938
Anthony J Mourek collection donated by Despina Kotsapouikis

□ **Drawing (2022.16.93)**
1939
Anthony J Mourek collection donated by Despina Kotsapouikis

□ **Drawing (2022.16.96)**
1938

□ **Drawing (2022.16.98)**
1939 – 1945
Anthony J Mourek collection donated by Despina Kotsapouikis

- **Music, Sheet (2022.4.14)**
1937

- **Music, Sheet (2022.4.15)**
1933

- **Music, Sheet (2022.4.16)**
1938

- **Music, Sheet (2022.4.18)**
1936

- **Music, Sheet (2022.4.19)**
1937

- **Music, Sheet (2022.4.7)**
1938

- **Book (2023.1.5)**
1932

- **Photograph (2023.22.5)**
1930s

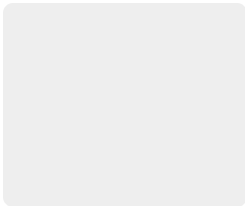
- **Book (2023.27.1)**
February 18, 1935

- **Spoon, Soup (2023.5.1)**
1900 - 1950

- **Tapestry (2024.23.1)**
1900 - 1934

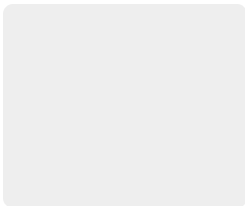
- **Photograph (2024.36.10)**
1939

- **Clipping, Newspaper (2024.50.2)**
September 26, 1934



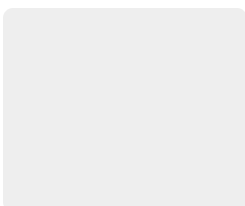
Book (2229)

1939,



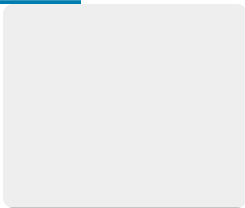
Book (2230)

1938,

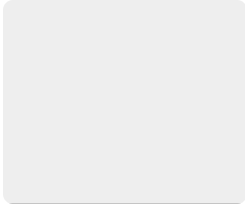


Book (2233)

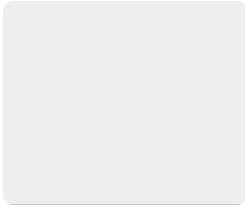
1935,



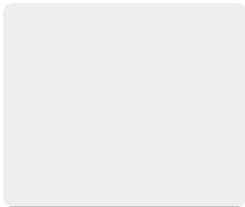
Book (2240)
1937,



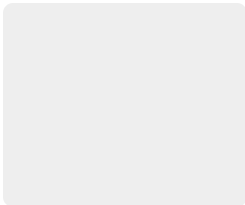
Book (2241)
1934,



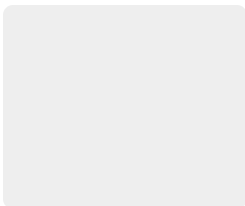
Book (2258)
1931,



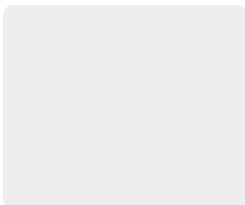
Book (2266)
1936,



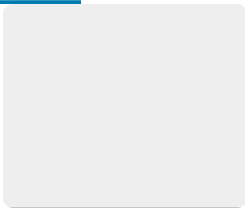
Book (2268)
1938,



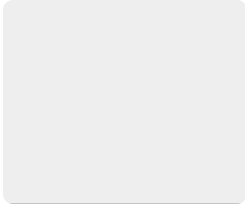
Book (2271)
1935,



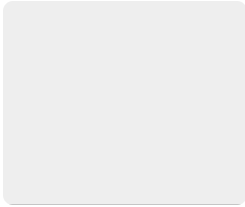
Book (2287)
1937,



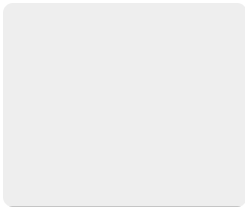
Book (2333)
1935,



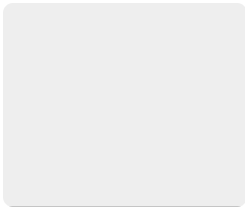
Book (2342)
1935,



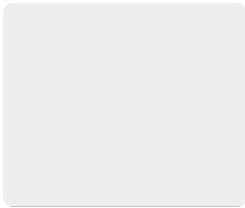
Book (2363)
1936,



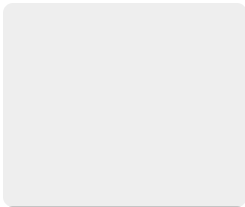
Book (2378)
1931,



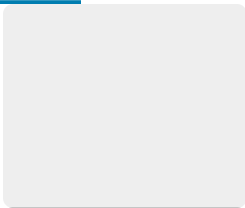
Book (2381)
1934,



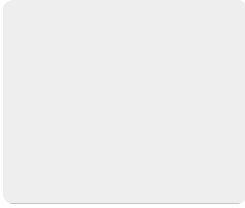
Book (2382)
1935,



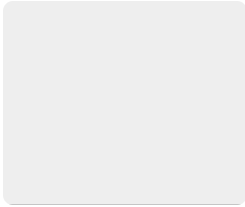
Book (2402)
1930,



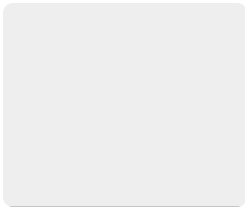
Book (2443)
1936,



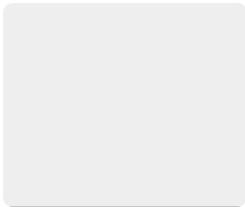
Book (2446)
1935,



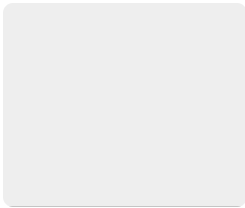
Book (2464)
1930,



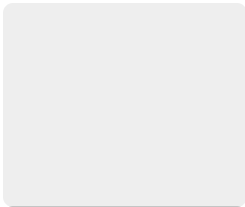
Book (2475)
1934,



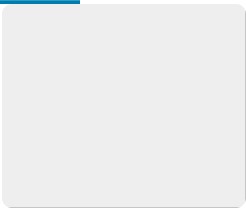
Book (2477)
1937,



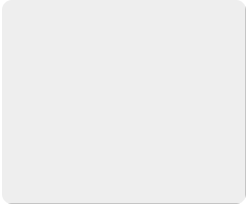
Book (2486)
1935,



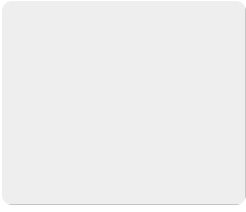
Book (2487)
1930,



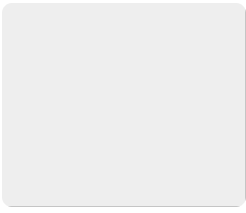
Book (2490)
1939,



Book (2506)
1936,



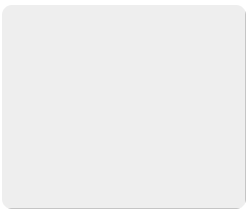
Book (2508)
1931,



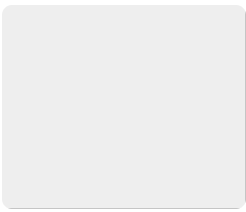
Book (2519)
1931,



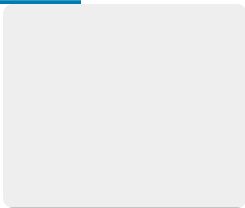
Book (2522)
20th century,



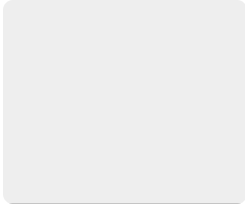
Book (2525)
1930,



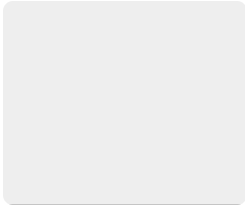
Book (2527)
1935,



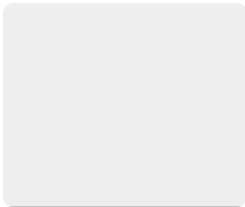
Book (2531)
1935,



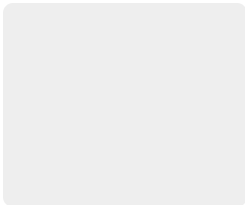
Book (2537)
1935,



Book (2542)
1939,



Book (2544)
1939,



Book (2565)
1930,



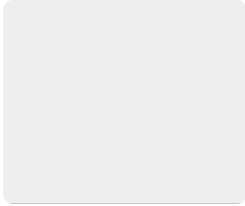
Book (2590)
20th century,



Book (2601)
20th century,



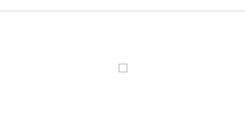
Book (2603)
20th century,



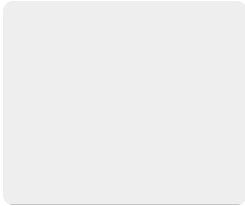
Book (2615)
1930,



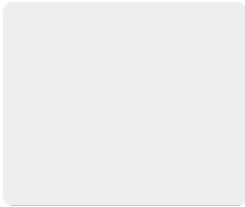
Book (2619)
20th century,



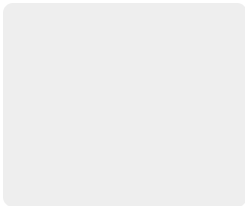
Book (B 358.J81936)
1936,
English



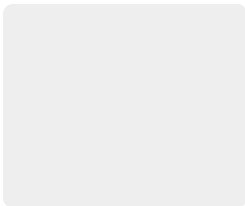
Book (B.E.I 1232 E)
1933,



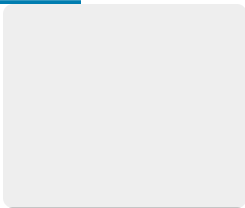
Book (B0445.B351938)
1938,
English



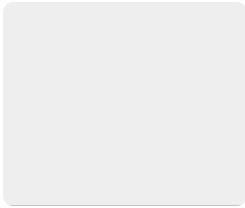
Book (B0485.H331939)
1939,
English



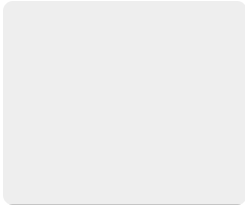
Book (D0469.G7S75)
1937,
English



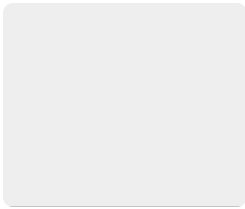
Book (D0638.E2B3)
1930,
English



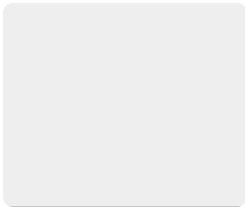
Book (DF0077.D8v.1)
1939,
English



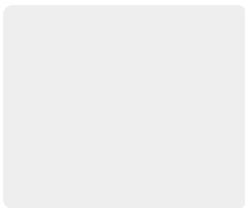
Book (DF0077.D8v.1c.2)
1939,
English



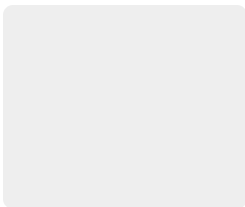
Book (DF0077.D8v.1c.3)
1939,
English



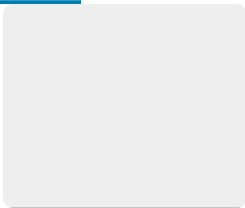
Book (DF0077.D8v.1c.4)
1939,
English



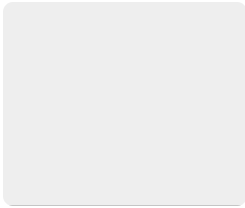
Book (DF0077.D8v.1c.5)
1939,
English



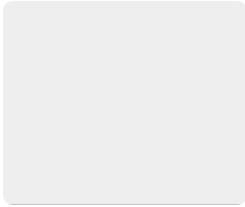
Book (DF0531.R8)
1933,
English



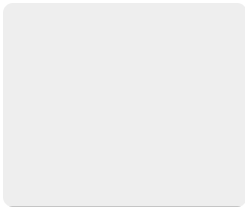
Book (DF0726.B581930)
1930,
English



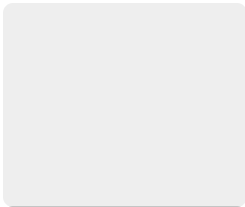
Book (DF0726.G371933)
1933,
English



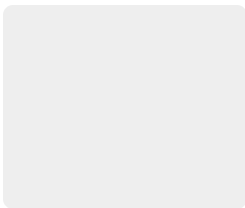
Book (DF0726.M36)
1938,
English



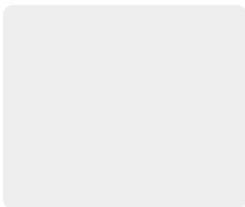
Book (DF0726.M36c.2)
1938,
English



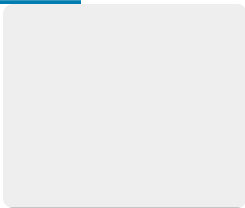
Book (DF0726.R3)
1939,
English



Book (DF0741.K971970)
20th century,
English



Book (DF0802.M31931)
1931,
English



Book (DF0807.B6)
1934,
English



Book (EKP-2640-C)
1939,



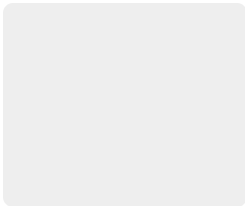
Book (EKP-525-D)
1933,



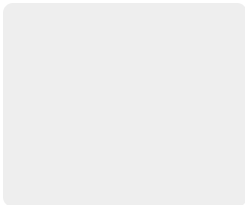
Book (EKP-555-SE)
20th century,



Book (EKP-567-N)
1931,



Book (EKP-657-DIA)
1933,



Book (F0548.G7A51937)
1937,

□ Flabellum (F2012.11)
1900 – 2012

□ Flabellum (F2012.12)
1900 – 2012

- **Pipe (F2013.10)**
1900 – 1940

- **Photograph (F2013.27)**
1920 – 1930

- **Photograph (F2013.55)**
1920 – 1940

- **Flag (F2013.7)**
1927 – 2000

- **Flag (F2013.8)**
1927 – 2000

- **Mortar & Pestle (F2013.9)**
1860 – 1930

- **Doll (F2014.143)**
1925 – 1983

- **Photograph (F2014.28)**
1860 – 1970

- **Photograph (F2014.30)**
1860 – 1970

- **Pot, Paste (F2014.4)**
1890 – 1960

- **Pot, Paste (F2014.5)**
1890 – 1960

- **Photograph (F2014.82)**
1935,

- **Photograph (F2015.22)**
December 11, 1939,

- **Album, Photograph (F2015.23)**
1937 – 1987

- **Photograph (F2015.68)**
June 28, 1938,

- **Photograph (F2015.92)**
1920 – 1930
Greek Star

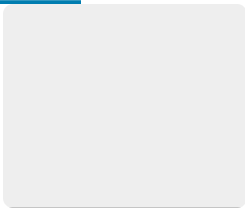
- **Diploma (F2016.172)**
1935,

- **Certificate, Membership (F2016.174)**
August 1, 1934

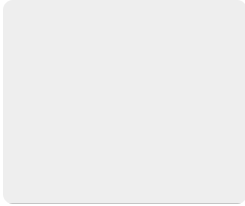
- **Medal, Commemorative (F2016.80)**
1930,

- **Photograph (F2022.2)**
1930 – 1967

- **Photograph (F2022.3)**
1930 – 1930



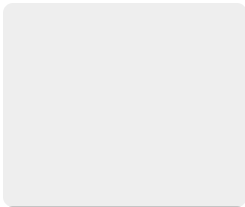
Book (G.P-4178-VD)
1932,



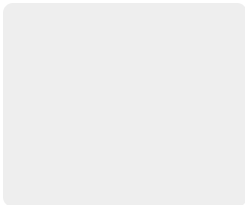
Book (HV1624.H7R49)
1935,
English



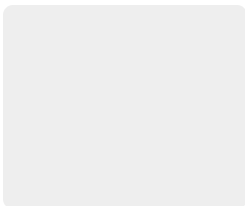
Book (IST 3162 D)
1931,



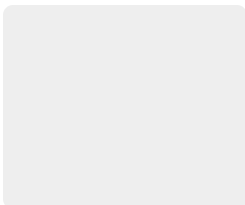
Book (IST 3375 G)
1932,



Book (IST-2464-LC)
1934,



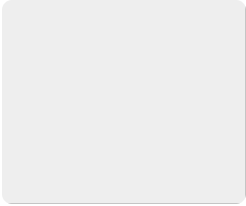
Book (JK1758.B751934)
1934,
English



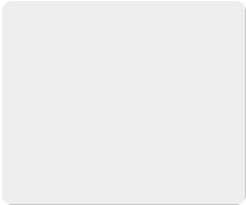
Book (N.F-1080-ZUCI)
1938,



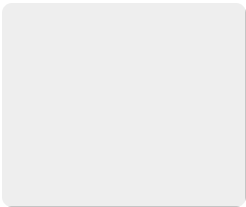
Book (N.F.1166-FL)
20th century,



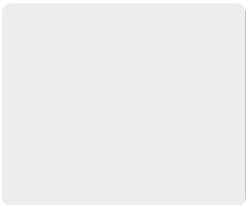
Book (N.F-2024-C)
1938,



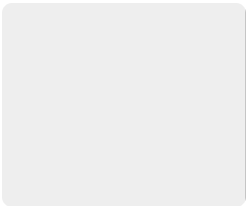
Book (N.F-305-K)
1930,



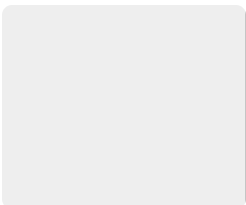
Book (N.F-383-S)
1937,



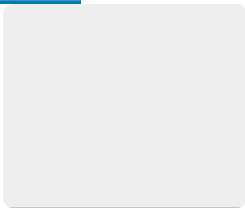
Book (N.F-916-ZRD)
1935,



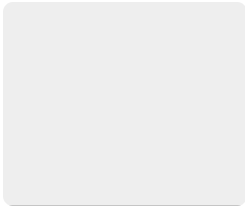
Book (N.F-943-FH)
1930,



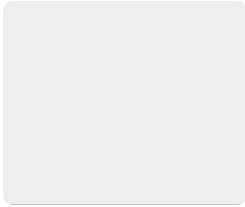
Book (N1920.A551931v.3)
1931-1942,
English



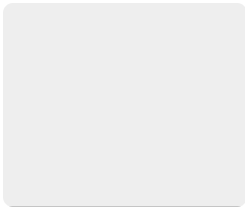
Book (N2420.P51935)
1935,
English



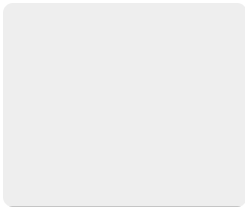
Book (NK5860.W33)
1939,
English



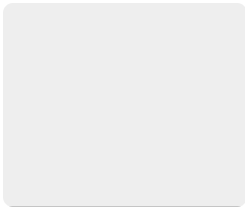
Book (NOM-2780-EQ)
1939,



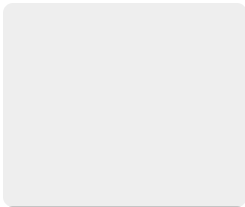
Book (P 859 K)
1938,



Book (PA5610.R46F67)
1938,
English



Book (STR 508)
1934,



Periodical (zzzGreekStar)
1907 - 1969,
