



Photograph (1993.40.8)  
September 8, 1992



Shorts (1994.3.2)  
circa 1994



Jersey (1994.3.3)  
circa 1994



Certificate, Award (1994.112.4)  
October 12, 1991



Certificate, Award (1994.112.5)  
1989 – 1993



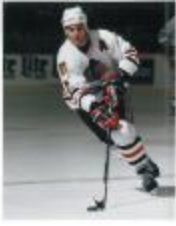
Certificate, Award (1994.112.6)  
June 6, 1992



Box, Candy (1994.127.2)  
circa 1990,  
SUGAR BOWL SWEET SHOP



Box, Candy (1994.127.3)  
1921 – 1997  
SUGAR BOWL SWEET SHOP



Picture (1994.130.1)  
1994



Picture (1994.130.2)  
1994



Box, Candy (1995.49.8.A)  
1990s,  
Gayety's Chocolates



Box, Candy (1995.49.8.B)  
1990s,  
Gayety's Chocolates



Box, Candy (1995.49.8.C)  
circa 1990,  
Gayety's Chocolates



Box, Candy (1995.49.8.D)  
1990s,  
Gayety's Chocolates



Box, Candy (1995.49.8.E)  
circa 1990,  
Gayety's Chocolates



Poster (1996.43.11)  
1990,



Photograph (1996.60.1.a)  
1990s



Photograph (1996.60.1.b)  
1990s



Photograph (1996.60.1.d)  
1990s



Photograph (1996.60.2)  
August 30, 1996



Hot Fudge Warmer (1996.64.7)  
1962 – 1996  
CUPID CANDIES



Box, Candy (1996.64.11.C)  
circa 1990,  
CUPID CANDIES



Box, Candy (1996.64.11.E)  
circa 1996,  
CUPID CANDIES



**Box, Candy (1996.64.11.F)**  
circa 1996,  
CUPID CANDIES

---



**Wrapping Paper Roll Cutter (1996.64.12)**  
1962 – 1996  
CUPID CANDIES

---



**Ad, Newspaper (1996.64.15.A)**  
April 12, 2013, 1936 – 2013  
CUPID CANDIES

---



**Award (1996.69.1)**  
February 18, 2013, 1995  
Olympia's Award

---



**Box (1997.44.8)**  
1970 – 1990  
Coula's Collection

---



**Jacket (1998.24.1.A)**  
circa 1990,  
Defenders of Democracy

---



**Pants (1998.24.1.B)**  
circa 1990,  
Defenders of Democracy

---



**Hat (1998.24.1.C)**  
circa 1990,  
Defenders of Democracy

---



**Photograph (1998.38.2)**  
1994  
Angelos's Collection

---



Photograph (1998.38.3)  
June 6, 1997  
Angelos's Collection



Photograph (1998.38.5)  
December 1992



Photograph (1998.50.1.1)  
October 13, 1994  
Theodore's Collection



Photograph (1998.50.1.2)  
October 13, 1994  
Theodore's Collection



Photograph (1998.50.1.3)  
October 13, 1994  
Theodore's Collection



Photograph (1998.50.1.4)  
October 13, 1994



Photograph (1998.50.1.5)  
October 15, 1994  
Theodore's Collection



Banner (1998.50.3)  
1994,



Photograph (1998.53.20)  
1997  
Steve N. Pisanos Collection



Plaque (1998.56.5)  
1991,



Photograph (1998.56.18)  
August 23, 1998



Photograph (1998.56.24)  
August 23, 1998



Painting (2000.11.1.1)  
1999,



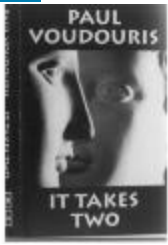
Painting (2000.11.1.2)  
1999,



Doll (2000.14.2)  
1990,



Photograph (2001.34.8.10)  
1994



Photograph (2001.34.8.15)  
1990



Stage, Puppet (2002.33.6)  
1990



Stage, Puppet (2002.33.7)  
1990, 1990



Program (2002.51.35)  
October 11 – 13, 1996,



Program (2002.51.37)  
October 7, 1992,



Box, Candy (2003.4.1.A)  
1996,  
MARGIES CANDIES



Box, Candy (2003.4.1.B)  
circa 1996,  
MARGIES CANDIES

Box, Candy (2003.4.1.C)



1996,  
MARGIES CANDIES

---



**Pedigree (2003.28.19)**  
1992,  
Spanos Family Papers

---



**Photograph (2003.36.53.3)**  
1992

---



**Photograph (2003.36.53.9)**  
1992

---



**Plate, Decorative (2003.37.11)**  
1900 – 2003  
JANE SARLAS FONTANA

---



**Print (2006.10.4)**  
1991,

---



**Print (2006.10.7)**  
1991,

---



**Print (2006.10.8)**  
1990,

---



**Print (2006.10.12)**  
1995,

---





**Award (2006.22.1)**  
1997,  
LOUIS MITCHELL ESTATE

---



**Plaque (2006.22.6)**  
March 30, 1996,  
LOUIS MITCHELL ESTATE

---



**Plaque (2006.22.7)**  
October 11, 1997,  
LOUIS MITCHELL ESTATE

---



**Framed Award (2006.22.9)**  
November 19, 1994,  
LOUIS MITCHELL ESTATE

---



**Photograph (2007.32.8)**  
1991

---



**Photograph (2007.32.13)**  
1994

---



**Slipper, Ballet (2007.52.1)**  
1970 – 2002

---



**Puppet, Shadow (2008.2.1)**  
April 11, 2013, 1965 – 2001

---



**Puppet, Shadow (2008.2.2)**  
April 11, 2013, 1965 – 2001

---



**Puppet, Shadow (2008.2.3)**  
April 11, 2013, 1965 – 2001

---



**Puppet, Shadow (2008.2.4)**  
April 11, 2013, 1965 – 2001

---



**Puppet, Shadow (2008.2.5)**  
April 11, 2013, 1965 – 2001

---



**Puppet, Shadow (2008.2.6)**  
April 11, 2013, 1965 – 2001

---



**Puppet, Shadow (2008.2.7)**  
April 11, 2013, 1965 – 2001

---



**Puppet, Shadow (2008.2.8)**  
April 11, 2013, 1965 – 2001

---



**Puppet, Shadow (2008.2.9)**  
April 13, 2013, 1965 – 2001

---



**Puppet, Shadow (2008.2.10)**  
1965 – 2001

---



**Puppet, Shadow (2008.2.11)**  
April 11, 2013, 1965 – 2001

---



**Puppet, Shadow (2008.2.12)**  
April 12, 2013, 1965 – 2001

---



**Puppet, Shadow (2008.2.13)**  
April 12, 2013, 1965 – 2001

---



**Puppet, Shadow (2008.2.14)**  
April 12, 2013, 1965 – 2001

---



**Puppet, Shadow (2008.2.15)**  
April 12, 2013, 1965 – 2001

---



**Puppet, Shadow (2008.2.16)**  
April 12, 2013, 1965 – 2001

---



**Puppet, Shadow (2008.2.17)**  
April 12, 2013, 1965 – 2001

---



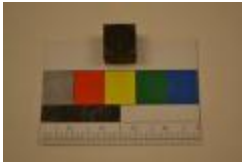
**Block, Printing (2008.37.1)**  
1957 – 2009  
Greek Art Printing Company Artifact Collection

---



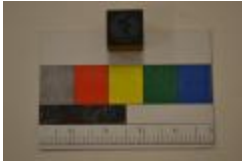
**Block, Printing (2008.37.2)**  
1957 – 2009  
Greek Art Printing Company Artifact Collection

---



**Block, Printing (2008.37.24)**  
1921 – 1996  
Greek Art Printing Company Artifact Collection

---



**Block, Printing (2008.37.48)**  
January 18, 1992,  
Greek Art Printing Company Artifact Collection

---



**Block, Printing (2008.37.53)**  
20th century  
Greek Art Printing Company Artifact Collection

---



**Matchbox (2011.1.1)**  
circa 2000, 1990 – 2010

---



**Matchbox (2011.1.2)**  
circa 2000, 1990 – 2010

---



**Matchbox (2011.1.3)**  
circa 2000, 1990 – 2010

---



**Matchbox (2011.1.4)**  
circa 2000, 1990 – 2010

---



**Matchbox (2011.1.5)**  
circa 2000, 1990 – 2010

---



**Matchbox (2011.1.6)**  
circa 2000, 1990 – 2010

---



**Matchbox (2011.1.7)**  
circa 2000, 1990 – 2010

---



**Matchbox (2011.1.8)**  
circa 2000, 1990 – 2010

---



**Matchbox (2011.1.9)**  
circa 2000, 1990 – 2010

---



**Matchbox (2011.1.10)**  
circa 2000, 1990 – 2010

---



**Matchbox (2011.1.11)**  
circa 2000, 1990 – 2010

---



**Matchbox (2011.1.12)**  
circa 2000, 1990 – 2010

---



Photograph (2011.9.1)  
1990s

---



Uniform (2011.9.2)  
1990s

---



Painting (2012.16.1)  
1991,

---



Painting (2012.27.1)  
1993,

---



Painting (2012.27.2)  
1993,

---



Painting (2012.27.3)  
1994,

---



Painting (2012.27.4)  
1994,

---



Painting (2012.27.5)  
1995,



**Poster (2012.40.4)**  
1993 – 1994



**Photograph (2012.40.10)**  
1994



**Doily (2013.1.235)**  
January 28, 2013, 1930 – 2000  
Celia's Textile Collection



**Doily (2013.1.236)**  
January 28, 2013, 1930 – 2000  
Celia's Textile Collection



**Doily (2013.1.237)**  
January 28, 2013, 1930 – 2000  
Celia's Textile Collection



**Doily (2013.1.238)**  
January 28, 2013, 1930 – 2000  
Celia's Textile Collection



**Pillowcase (2013.1.239)**  
January 28, 2013, 1930 – 2000  
Celia's Textile Collection



**Pillowcase (2013.1.240)**  
January 28, 2013, 1930 – 2000  
Celia's Textile Collection



**Doily (2013.1.241)**  
January 30, 2013, 1930 – 2000  
Celia's Textile Collection





**Doily (2013.1.243)**  
January 30, 2013, 1930 – 2000  
Celia's Textile Collection

---



**Doily (2013.1.244)**  
January 30, 2013, 1930 – 2000  
Celia's Textile Collection

---



**Doily (2013.1.245)**  
January 30, 2013, 1930 – 2000  
Celia's Textile Collection

---



**Doily (2013.1.246)**  
January 30, 2013, 1930 – 2000  
Celia's Textile Collection

---



**Doily (2013.1.247)**  
January 30, 2013, 1930 – 2000  
Celia's Textile Collection

---



**Pillowcase (2013.1.248)**  
January 30, 2013, 1930 – 2000  
Celia's Textile Collection

---



**Doily (2013.1.249)**  
January 30, 2013, 1930 – 2000  
Celia's Textile Collection

---



**Doily (2013.1.250)**  
January 30, 2013, 1930 – 2000  
Celia's Textile Collection

---



**Doily (2013.1.251)**  
January 30, 2013, 1930 – 2000  
Celia's Textile Collection

---



**Doily (2013.1.252)**  
January 30, 2013, 1930 – 2000  
Celia's Textile Collection

---



**Doily (2013.1.253)**  
January 30, 2013, 1930 – 2000  
Celia's Textile Collection

---



**Doily (2013.1.254)**  
January 30, 2013, 1930 – 2000  
Celia's Textile Collection

---



**Doily (2013.1.255)**  
January 30, 2013, 1930 – 2000  
Celia's Textile Collection

---



**Doily (2013.1.256)**  
January 30, 2013, 1930 – 2000  
Celia's Textile Collection

---



**Doily (2013.1.257)**  
January 30, 2013, 1930 – 2000  
Celia's Textile Collection

---



**Doily (2013.1.258)**  
January 30, 2013, 1930 – 2000  
Celia's Textile Collection

---



**Doily (2013.1.259)**  
January 30, 2013, 1930 – 2000  
Celia's Textile Collection

---



**Doily (2013.1.260)**  
January 30, 2013, 1930 – 2000  
Celia's Textile Collection

---



**Doily (2013.1.261)**  
January 30, 2013, 1930 – 2000  
Celia's Textile Collection

---



**Doily (2013.1.262)**  
January 30, 2013, 1930 – 2000  
Celia's Textile Collection

---



**Doily (2013.1.263)**  
January 30, 2013, 1930 – 2000  
Celia's Textile Collection

---



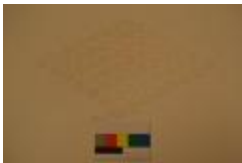
**Doily (2013.1.264)**  
January 30, 2013, 1930 – 2000  
Celia's Textile Collection

---



**Doily (2013.1.265)**  
January 30, 2013, 1930 – 2000  
Celia's Textile Collection

---



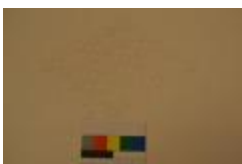
**Doily (2013.1.266)**  
January 30, 2013, 1930 – 2000  
Celia's Textile Collection

---



**Doily (2013.1.267)**  
January 30, 2013, 1930 – 2000  
Celia's Textile Collection

---



**Doily (2013.1.268)**  
January 30, 2013, 1930 – 2000  
Celia's Textile Collection

---



**Doily (2013.1.269)**  
January 28, 2013, 1930 – 2000  
Celia's Textile Collection

---



**Doily (2013.1.270)**  
January 28, 2013, 1930 – 2000  
Celia's Textile Collection

---



**Doily (2013.1.271)**  
January 28, 2013, 1930 – 2000  
Celia's Textile Collection

---



**Doily (2013.1.272)**  
January 28, 2013, 1930 – 2000  
Celia's Textile Collection

---



**Doily (2013.1.273)**  
January 28, 2013, 1930 – 2000  
Celia's Textile Collection

---



**Doily (2013.1.274)**  
January 28, 2013, 1930 – 2000  
Celia's Textile Collection

---



**Doily (2013.1.275)**  
January 28, 2013, 1930 – 2000  
Celia's Textile Collection

---



**Doily (2013.1.276)**  
January 28, 2013, 1930 – 2000  
Celia's Textile Collection

---



**Doily (2013.1.277)**  
January 28, 2013, 1930 – 2000  
Celia's Textile Collection

---



**Doily (2013.1.278)**  
January 28, 2013, 1930 – 2000  
Celia's Textile Collection

---



**Doily (2013.1.279)**  
January 28, 2013, 1930 – 2000  
Celia's Textile Collection

---



**Pillowcase (2013.1.280)**  
January 28, 2013, 1930 – 2000  
Celia's Textile Collection

---



**Pillowcase (2013.1.281)**  
January 28, 2013, 1930 – 2000  
Celia's Textile Collection

---



**Tablecloth (2013.1.282)**  
January 28, 2013, 1930 – 2000  
Celia's Textile Collection

---



**Tablecloth (2013.1.283)**  
January 28, 2013, 1930 – 2000  
Celia's Textile Collection

---



**Runner, Table (2013.1.284)**  
January 28, 2013, 1930 – 2000  
Celia's Textile Collection

---



**Plaque (2013.2.12)**  
January 22, 2013, 1995

---



**Envelope (2013.5.148)**  
1996,

---



Letter (2013.5.149)  
January 1, 1996,



Photograph (2013.5.151)  
1999



Photograph (2013.5.152)  
1999



Painting (2013.20.1)  
1964 – 1999



Stamp, Postage (2015.21.1)  
1940 – 2005



Certificate, Death (2016.2.17)  
1993  
Economou Family Papers



Mold, Glass (2016.7.1)  
1990s,



**Print (2016.13.1)**  
1994,



**Glass, shot (2017.12.1)**  
1968 – 2016  
The Parthenon Restaurant Collection



**Glass, shot (2017.12.2)**  
1968 – 2016  
The Parthenon Restaurant Collection



**Holder, paper (2017.12.3)**  
1968 – 2016  
The Parthenon Restaurant Collection



**Book, Menu (2017.12.40)**  
1968 – 2016  
The Parthenon Restaurant Collection



**Book, Menu (2017.12.41)**  
1968 – 2016  
The Parthenon Restaurant Collection



**Book, Menu (2017.12.42)**  
1968 – 2016  
The Parthenon Restaurant Collection



Button (2017.15.14)  
1997



Button (2017.15.18)  
1997



Button (2017.15.30)  
1999



Button (2017.15.32)  
1996



Print (2018.12.2)  
1991,



Painting (2020.2.3)  
1993  
George Kokines Collection





Painting (2020.2.5)  
1998  
George Kokines Collection

---



Painting (2020.2.6)  
1998  
George Kokines Collection

---



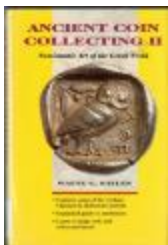
Painting (2020.2.7)  
1996  
George Kokines Collection

---



Sketch (2020.2.8)  
1996  
George Kokines Collection

---



Book (CJ 339 .S39 1997)  
1997

---



Painting (F2012.10)  
1990,

---



Flabellum (F2012.11)  
1900 – 2012

---



**Flabellum (F2012.12)**  
1900 – 2012



**Flag (F2013.7)**  
1927 – 2000



**Flag (F2013.8)**  
1927 – 2000



**Plaque (F2013.53)**  
1990,  
Greek-American Community Services Plaques, Greek-American Community  
Services Collection



**Plaque (F2013.54)**  
1992,  
Greek-American Community Services Plaques, Greek-American Community  
Services Collection



**Plaque (F2013.69)**  
1989 – 1992,  
Greek-American Community Services Plaques, Greek-American Community  
Services Collection



**Plaque (F2013.70)**  
1993,  
Greek-American Community Services Plaques, Greek-American Community  
Services Collection



**Plaque (F2013.71)**  
1990,  
Greek-American Community Services Plaques, Greek-American Community Services Collection



**Plaque (F2013.72)**  
1993  
Greek-American Community Services Plaques, Greek-American Community Services Collection



**Plaque (F2013.73)**  
1992  
Greek-American Community Services Plaques, Greek-American Community Services Collection



**Plaque (F2013.74)**  
1990s,  
Greek-American Community Services Plaques, Greek-American Community Services Collection



**Sticker, Bumper (F2014.117.1)**  
circa 1990 – 2000,



**Sticker, Bumper (F2014.117.2)**  
circa 1990 – 2000,



**Sticker, Bumper (F2014.121)**  
1992,



**Sticker, Bumper (F2014.124)**  
1970 – 1990

---



**Handbill, Political (F2014.125)**  
1992,

---



**Announcement, Funeral (F2015.13)**  
November 28, 1990,

---



**Photograph (F2015.65)**  
1990s

---



**Photograph (F2015.69)**  
1992  
Greek Star

---



**Photograph (F2015.70)**  
1992  
Greek Star

---



**Photograph (F2015.71)**  
1992  
Greek Star

---



**Photograph (F2015.72)**  
1992  
Greek Star

---



**Photograph (F2015.73)**  
1992  
Greek Star

---



**Photograph (F2015.74)**  
1992  
Greek Star

---



**Photograph (F2015.75)**  
1992  
Greek Star

---



**Photograph (F2015.76)**  
1992  
Greek Star

---



**Photograph (F2015.77)**  
1992  
Greek Star

---



**Photograph (F2015.78)**  
1992  
Greek Star

---



**Photograph (F2015.79)**  
1992  
Greek Star

---



**Photograph (F2015.80)**  
1992  
Greek Star

---



**Photograph (F2015.81)**  
1992  
Greek Star

---



**Banner (F2015.98)**  
1992,



**Banner (F2015.99)**  
1990,



**Banner (F2015.100)**  
1992,



**Pin, Political (F2016.5)**  
1973 – 2002



**Pin, Political (F2016.6)**  
1962 – 1992



**Pin, Campaign (F2016.9)**  
1991,



**Pin, Campaign (F2016.16)**  
1991,



Poster, Political (F2016.66)  
1991,



Poster (F2016.89)  
1994,



Journal (F2016.148)  
1990,



Photograph (F2016.152)  
1994



Photograph (F2016.153)  
1994



Photograph (F2016.178)  
October 22, 1993  
Greek-American Community Services Collection



Photograph (F2016.179)  
October 22, 1993  
Greek-American Community Services Collection



**Photograph (F2016.180)**  
October 22, 1993  
Greek-American Community Services Collection

---



**Photograph (F2016.181)**  
October 22, 1993  
Greek-American Community Services Collection

---



**Photograph (F2016.182)**  
October 11, 1991  
Greek-American Community Services Collection

---



**Photograph (F2016.183)**  
October 11, 1991  
Greek-American Community Services Collection

---



**Photograph (F2016.184)**  
October 11, 1991  
Greek-American Community Services Collection

---



**Photograph (F2016.185)**  
October 11, 1991  
Greek-American Community Services Collection

---



**Photograph (F2016.186)**  
October 11, 1991  
Greek-American Community Services Collection

---





**Photograph (F2016.187)**  
October 11, 1991



**Photograph (F2016.188)**  
October 11, 1991  
Greek-American Community Services Collection



**Photograph (F2016.189)**  
October 11, 1991  
Greek-American Community Services Collection



**Photograph (F2016.203)**  
October 21, 1994  
Greek-American Community Services Collection



**Photograph (F2016.204)**  
October 21, 1994  
Greek-American Community Services Collection



**Photograph (F2016.205)**  
October 21, 1994



**Photograph (F2016.206)**  
October 21, 1994



**Photograph (F2016.207)**  
October 21, 1994



**Photograph (F2016.208)**  
October 21, 1994



**Photograph (F2016.209)**  
October 21, 1994



**Photograph (F2016.210)**  
October 21, 1994  
Greek-American Community Services Collection



**Photograph (F2016.211)**  
October 21, 1994  
Greek-American Community Services Collection



**Photograph (F2016.219)**  
September 28, 1990  
Greek-American Community Services Collection



**Photograph (F2016.220)**  
September 28, 1990  
Greek-American Community Services Collection



**Photograph (F2016.221)**  
September 28, 1990  
Greek-American Community Services Collection

---



**Photograph (F2016.222)**  
September 28, 1990  
Greek-American Community Services Collection

---



**Photograph (F2016.223)**  
September 28, 1990  
Greek-American Community Services Collection

---



**Photograph (F2016.224)**  
September 28, 1990  
Greek-American Community Services Collection

---



**Photograph (F2016.225)**  
September 28, 1990  
Greek-American Community Services Collection

---



**Album, Photograph (F2016.226)**  
1996 – 1997,

---